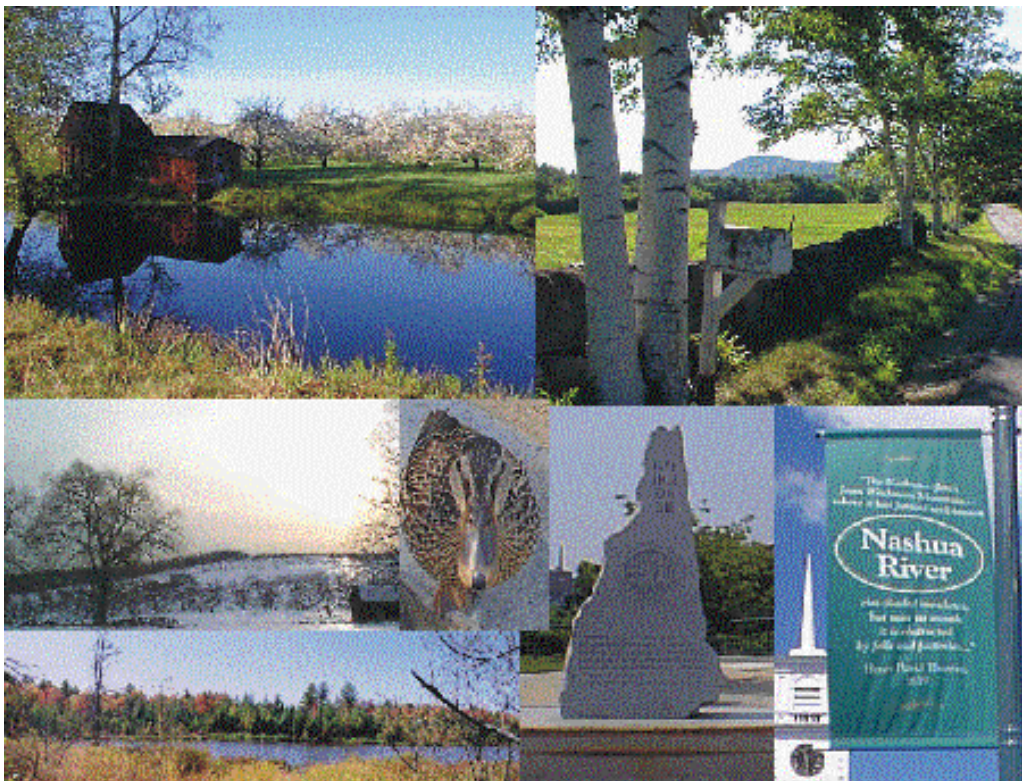


# REGIONAL ENVIRONMENTAL PLANNING PROGRAM



NASHUA REGIONAL PLANNING COMMISSION

JANUARY 2000

---



# REGIONAL ENVIRONMENTAL PLANNING PROGRAM (REPP)

## Final Report

January 2000

Nashua Regional Planning Commission  
115 Main Street  
PO Box 847  
Nashua, NH 03061

The Nashua Regional Planning Commission would like to acknowledge the time and research invested by towns and individuals in our planning region in the completion of this report. The Regional Environmental Planning Program is funded by the New Hampshire Department of Environmental Services.

Due to the high cost of printing, reprints of this document may be purchased for the reproduction costs.  
Contact NRPC at (603) 883-0366 for details.

This document may also be printed from our website at [www.nashuarpc.org](http://www.nashuarpc.org).





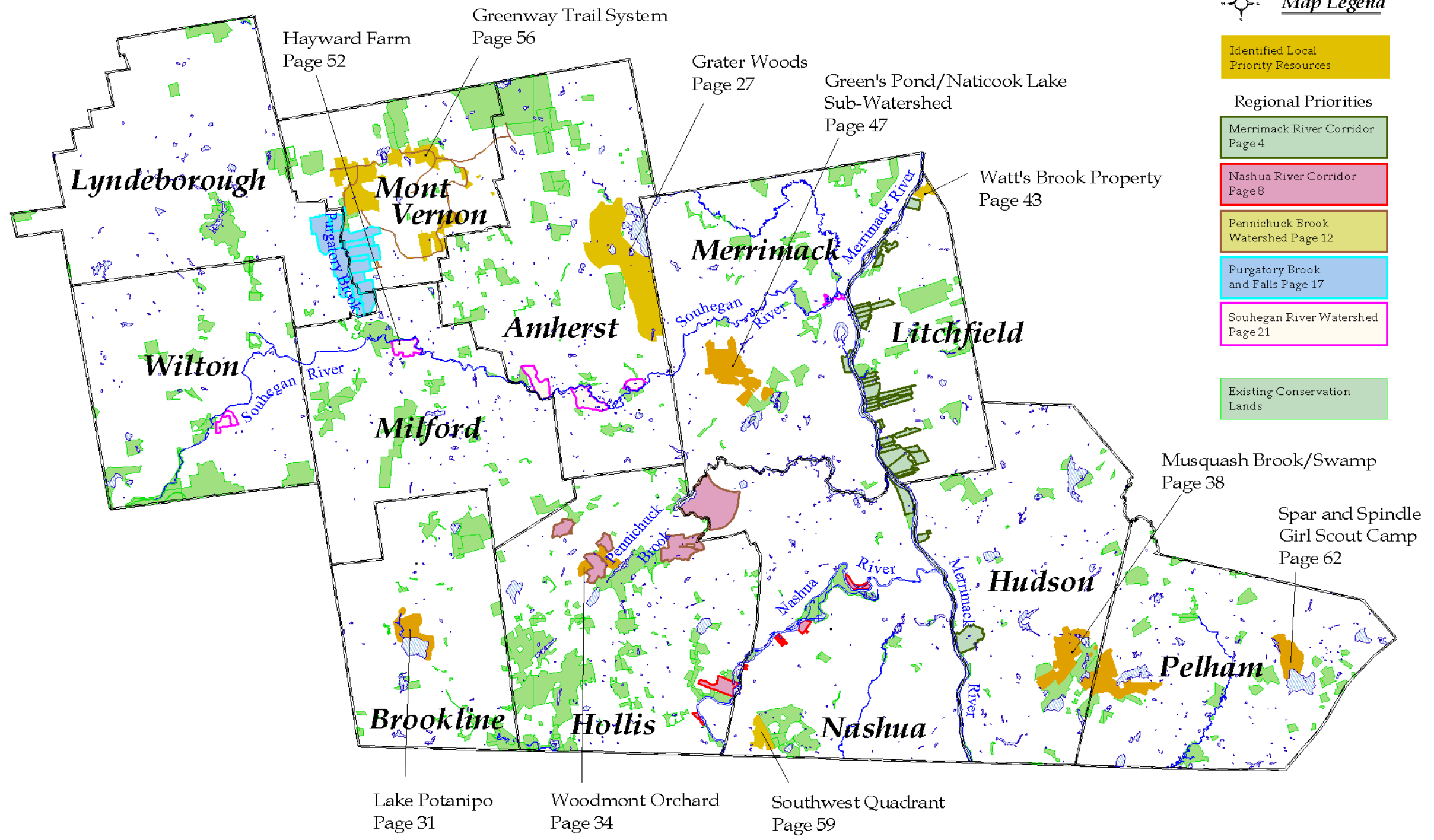
## TABLE of CONTENTS

Table of Contents .....	i
Graphic Index Map .....	ii
<b>INTRODUCTION .....</b>	<b>1</b>
<b>REGIONAL PRIORITIES</b>	
Merrimack River Corridor Regional Priority .....	2
Nashua River Corridor Regional Priority .....	7
Pennichuck Brook Regional Priority .....	11
Purgatory Brook Regional Priority .....	16
Souhegan River Corridor Regional Priority .....	20
<b>LOCAL PRIORITIES</b>	
Town of Amherst.....	26
Town of Brookline.....	30
Town of Hollis .....	33
Town of Hudson.....	37
Town of Litchfield .....	42
Town of Merrimack.....	46
Town of Milford .....	51
Town of Mont Vernon .....	55
City of Nashua .....	58
Town of Pelham.....	61
<b>CULTURAL/HISTORIC PRIORITIES</b>	
Town of Amherst .....	65
Town of Hollis .....	67
Town of Lyndeborough .....	74

#530D-1A



## Local and Regional Conservation Priorities in the NRPC Region (1999)



**Map Legend**

- Identified Local Priority Resources
- Regional Priorities
  - Merrimack River Corridor Page 4
  - Nashua River Corridor Page 8
  - Pennichuck Brook Watershed Page 12
  - Purgatory Brook and Falls Page 17
  - Souhegan River Watershed Page 21
- Existing Conservation Lands





## INTRODUCTION

The Regional Environmental Planning Program (REPP) was funded by the Department of Environmental Services as a means to develop an inventory of New Hampshire's most significant unprotected water, land, forest, historic, cultural, ecological, geological and public resources. The Land and Community Heritage Commission (LCHC) was created with the passage of SB 493. The LCHC has recommended that funding be made available annually to communities, non-profit organizations and state agencies through a competitive application process for the voluntary conservation and preservation of targeted resources. REPP was established, in part, to respond to SB 493.

During year one, a comprehensive inventory was assembled through local conservation and historical commissions. In year two, the assembled data was refined and public meetings were held to select five priority resources for each community. Planning boards, historic district commissions, watershed associations, land trusts, environmental groups, charitable and philanthropic organizations and other stakeholders were contacted by each of the region's conservation commissions and invited to provide input. In addition, the conservation commissions were asked to identify their highest priority resource and gather a comprehensive set of data, based on the following criteria: resource type, significance of the property, imminence of threat, leverage; local support, partnerships; public access, stewardship, and method of preservation.

The year one report also categorized "Regional Priorities". These were resources that were identified by more than one town. Although eleven were cited, the Nashua Regional Planning Commission (NRPC) staff selected five for more detailed analysis: Purgatory and Pennichuck Brook Watersheds and the Merrimack, Nashua and Souhegan River Corridors. The Conservation Commissions used the same criteria for choosing the highest regional priority as they did for the local properties.

While it is important to create and maintain a database of all resources, this report will highlight the resources in the region that are in most serious need of protection. This final document will provide a detailed profile of the top local and regional priorities in each community. The report will call attention to resources 2 through 5, but will not provide extensive details about them. Detailed information on the remaining priorities, and a complete resources inventory, is available at NRPC and local Conservation Commission offices. In addition, the complete inventory provided by the communities during Year One is available in a companion document prepared by the NRPC. That document is available at NRPC or through its website ([www.nashuarpc.org](http://www.nashuarpc.org)).

This report is to be used as a tool for developing options and strategies for resource protection. It does not represent regional or municipal government policies or programmatic actions.

#530D-2