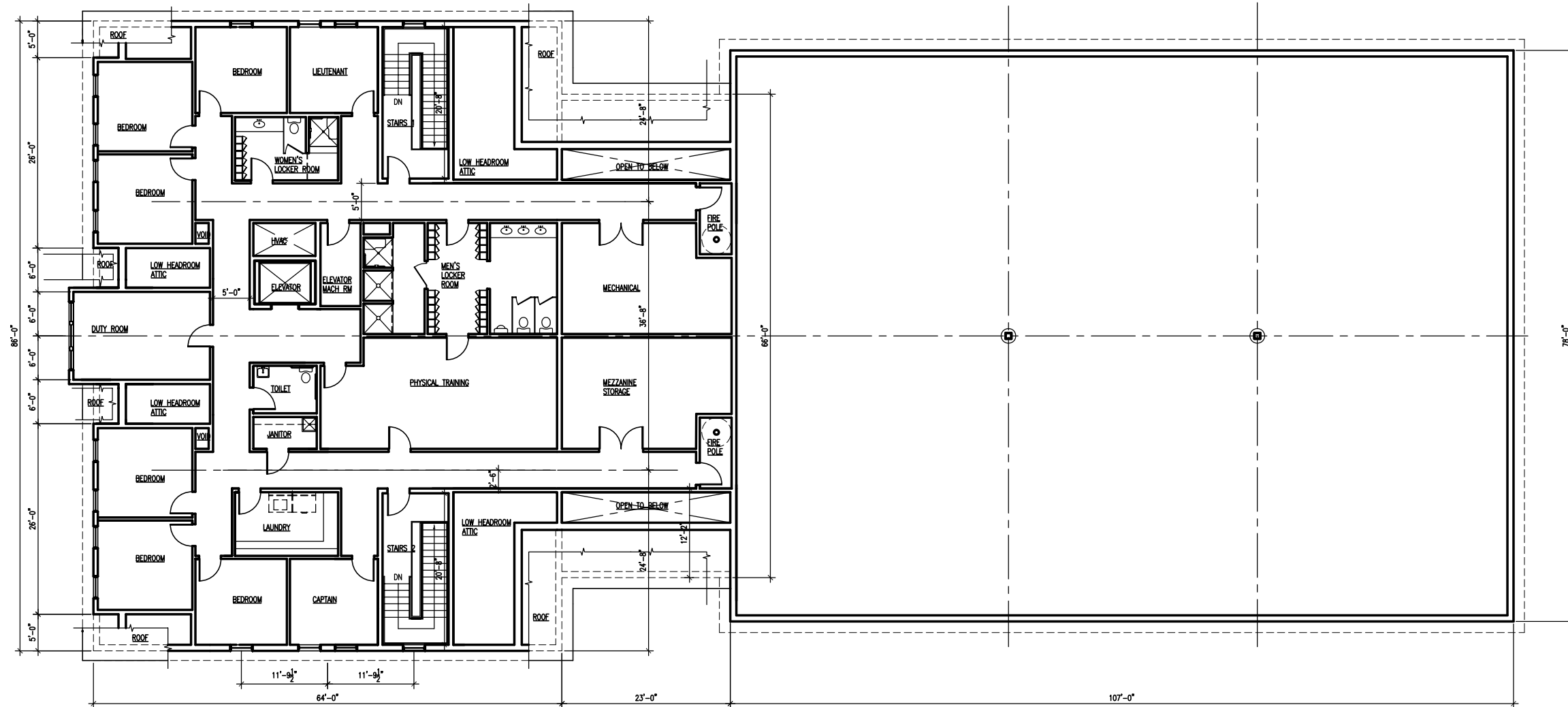


SDA

Sumner Davis Architects, Inc.
 959 Islington Street
 Portsmouth NH 03801
 603-436-8891 603-436-1121 fax
 © 2007 Sumner Davis Architects, Inc.



PELHAM FIRE DEPARTMENT Central Station

Pelham,
 New Hampshire
 03076

1 SECOND FLOOR PLAN
 A1.02 SCALE: 1/8"=1'-0"


Revisions:

Date: October 29, 2007
 Drawn By: GWL
 Approved By: WKD
 Scale: As Noted
 File: 27-044
 Sheet Title:

SECOND FLOOR PLAN

Sheet No: **A1.02**