

Pelham 2024 Prime Wetlands Study



WEST 
ENVIRONMENTAL INC.



2024 Prime Wetland Original Proposal

- This proposal is based on the recommendations of the Pelham Conservation Commission to evaluate
- 10 wetlands totaling 202 acres
- Identified as Wetlands D, E, F, G, H, N, P, Q, R and V on the Pelham Prime Wetlands Assessment Map.

Wetland	Acres
A	11.2
B	18.4
C	49.5
D	17.2
E	50.0
F	24.8
G	6.4
H	24.4
I	58.2
J	9.3
K	2.4
L	3.3
M	13.2
N	8.6
O	11.8
P	22.2
Q	13.2
R	68.2
S	15.0
T	37.2
U	41.0
V	20.1
W	11.5
X	37.2
Y	37.9
Z	13.2

Pelham Prime Wetlands Assessment

West Environmental Inc. 2024


0 1 2 mi


N

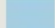
Total # of Wetlands: 26
Approx Total Acre: 625

 Pelham

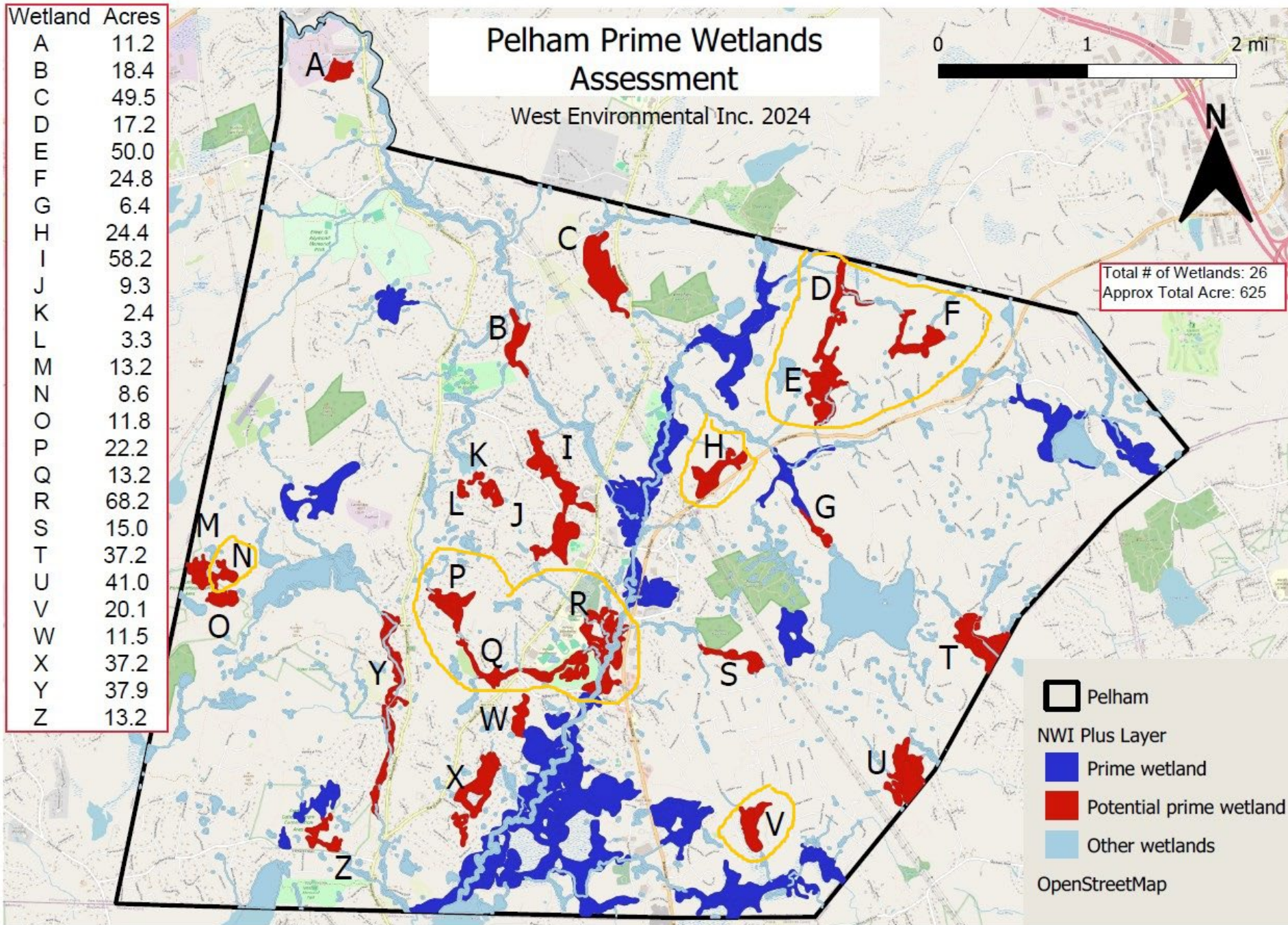
NWI Plus Layer


 Prime wetland


 Potential prime wetland

 Other wetlands


OpenStreetMap




- 
-
- Verify that the wetland meets the statutory requirements established for a prime wetland to be at least 2 acres in size; to not consist of a water body only; to have at least 4 primary wetland functions, one of which must be wildlife habitat; and to be at least 50 feet wide at its narrowest point.

- 
-
- Prepare final report and shape files of prime wetlands.
 - Present findings to the Pelham Conservation Commission.

- 
-
- There are no new 100-foot buffers to any new Prime Wetlands

- 
-
- Wetland D and E were not accessible and therefore were not mapped and studied for Prime Wetland Designation
 - Wetland G is already designated as a Prime Wetland

- 
-
- Wetland R had to be separated into two wetlands due to a constructed trail bridge that reduced the width below 50 feet.

Wetland	Acres
A	11.2
B	18.4
C	49.5
D	17.2
E	50.0
F	24.8
G	6.4
H	24.4
I	58.2
J	9.3
K	2.4
L	3.3
M	13.2
N	8.6
O	11.8
P	22.2
Q	13.2
R	68.2
S	15.0
T	37.2
U	41.0
V	20.1
W	11.5
X	37.2
Y	37.9
Z	13.2

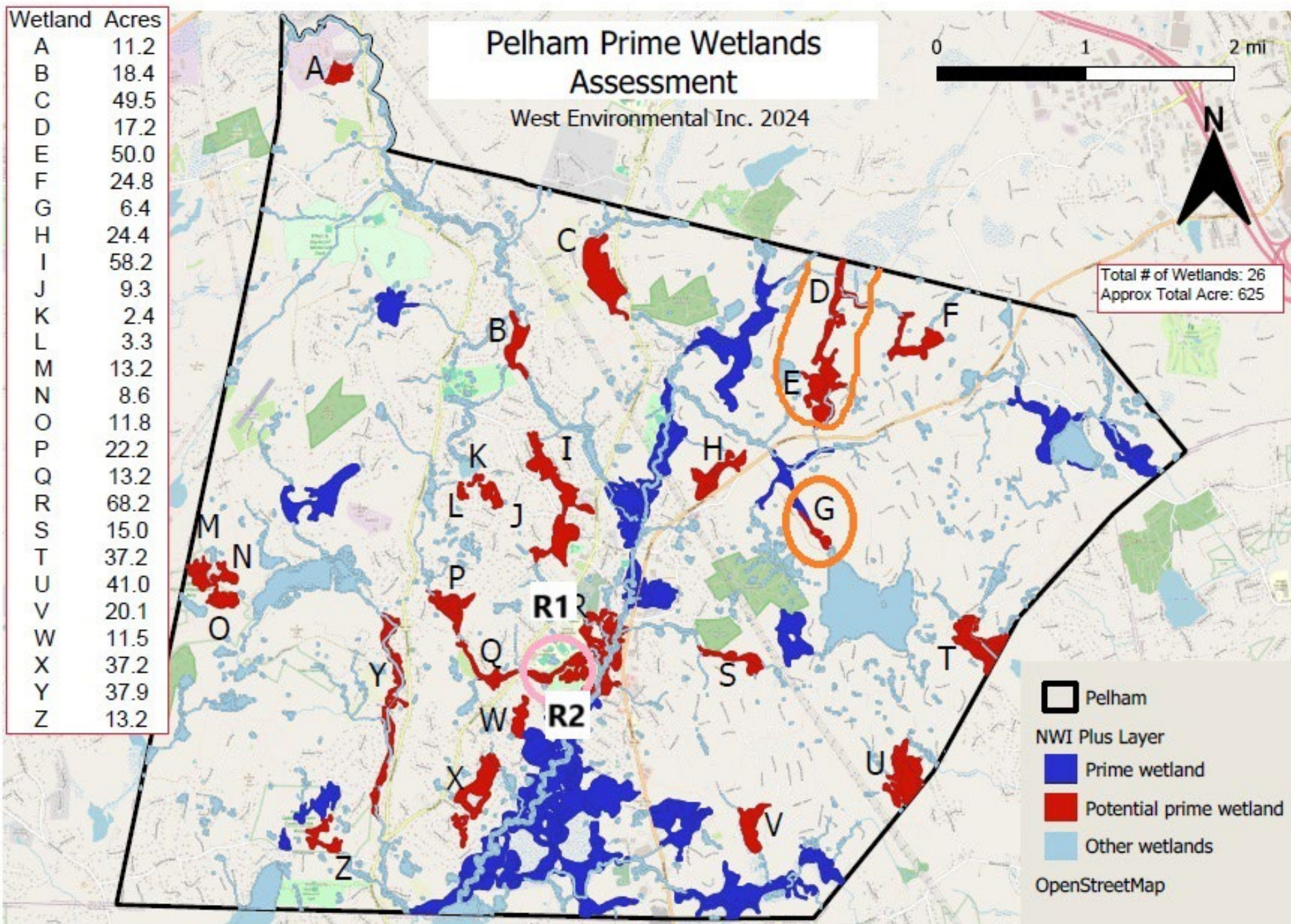
Pelham Prime Wetlands Assessment

West Environmental Inc. 2024

0 1 2 mi

Total # of Wetlands: 26
Approx Total Acre: 625

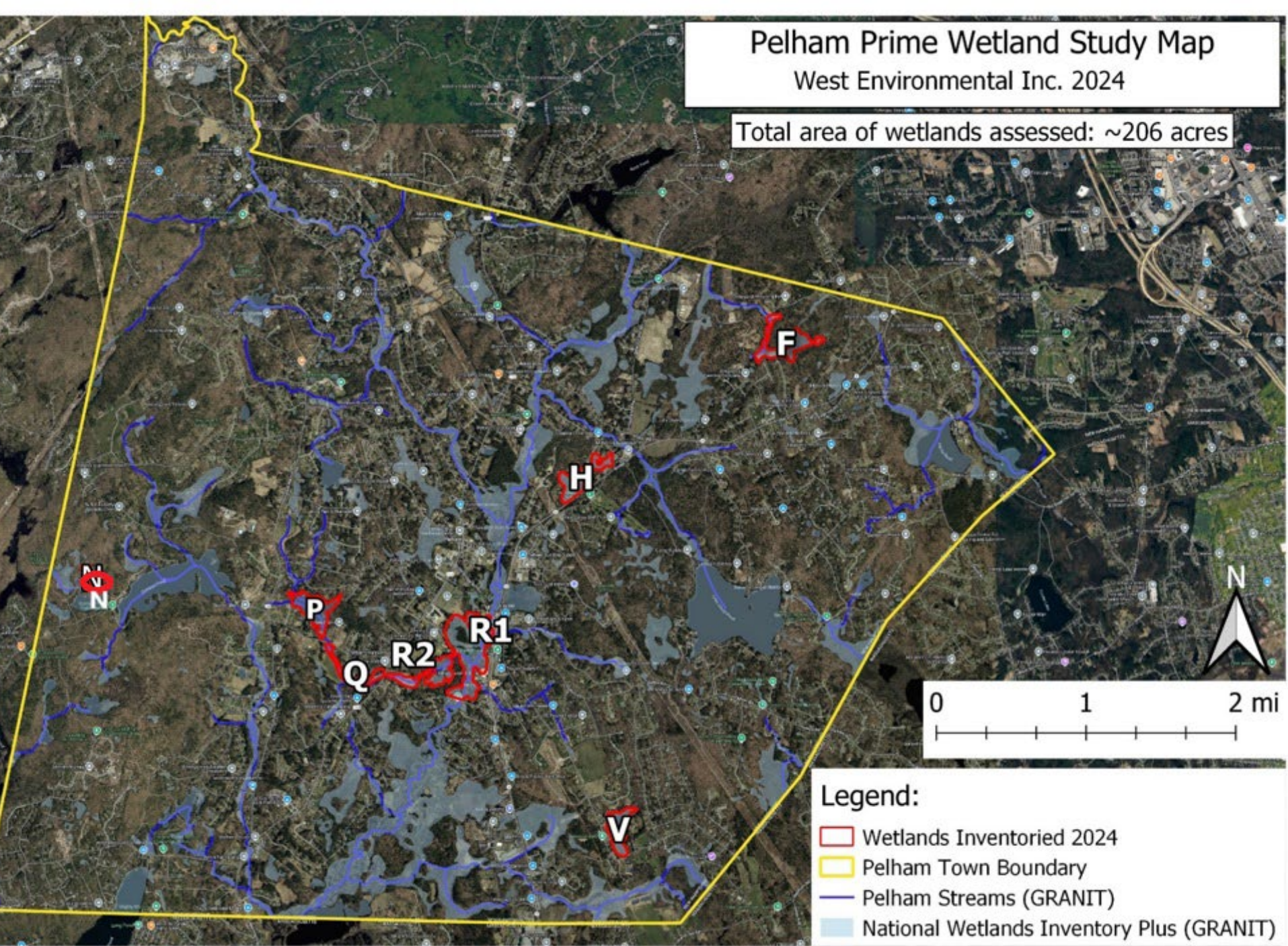
- Pelham
- NWI Plus Layer
 - Prime wetland
 - Potential prime wetland
 - Other wetlands
- OpenStreetMap

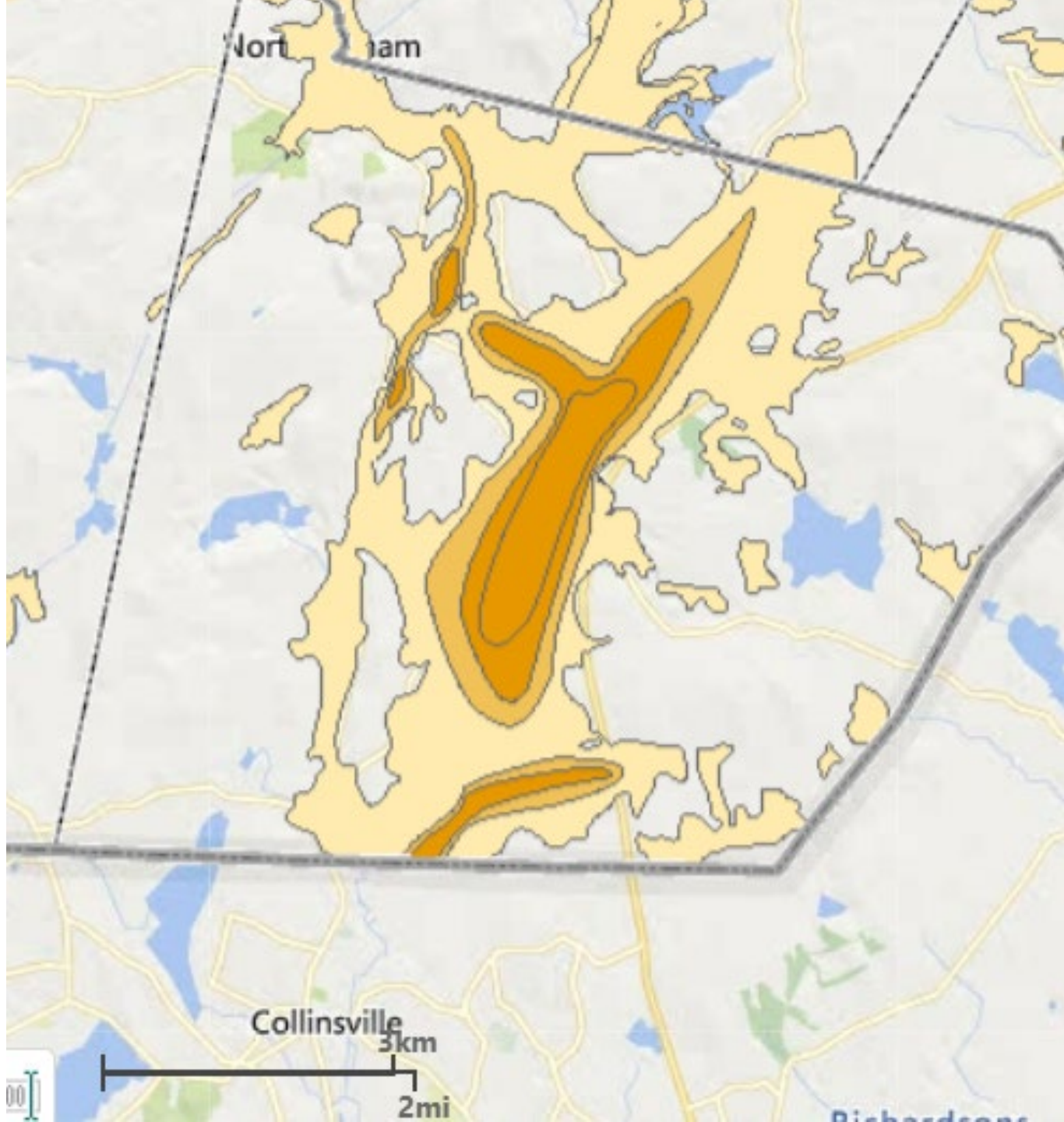


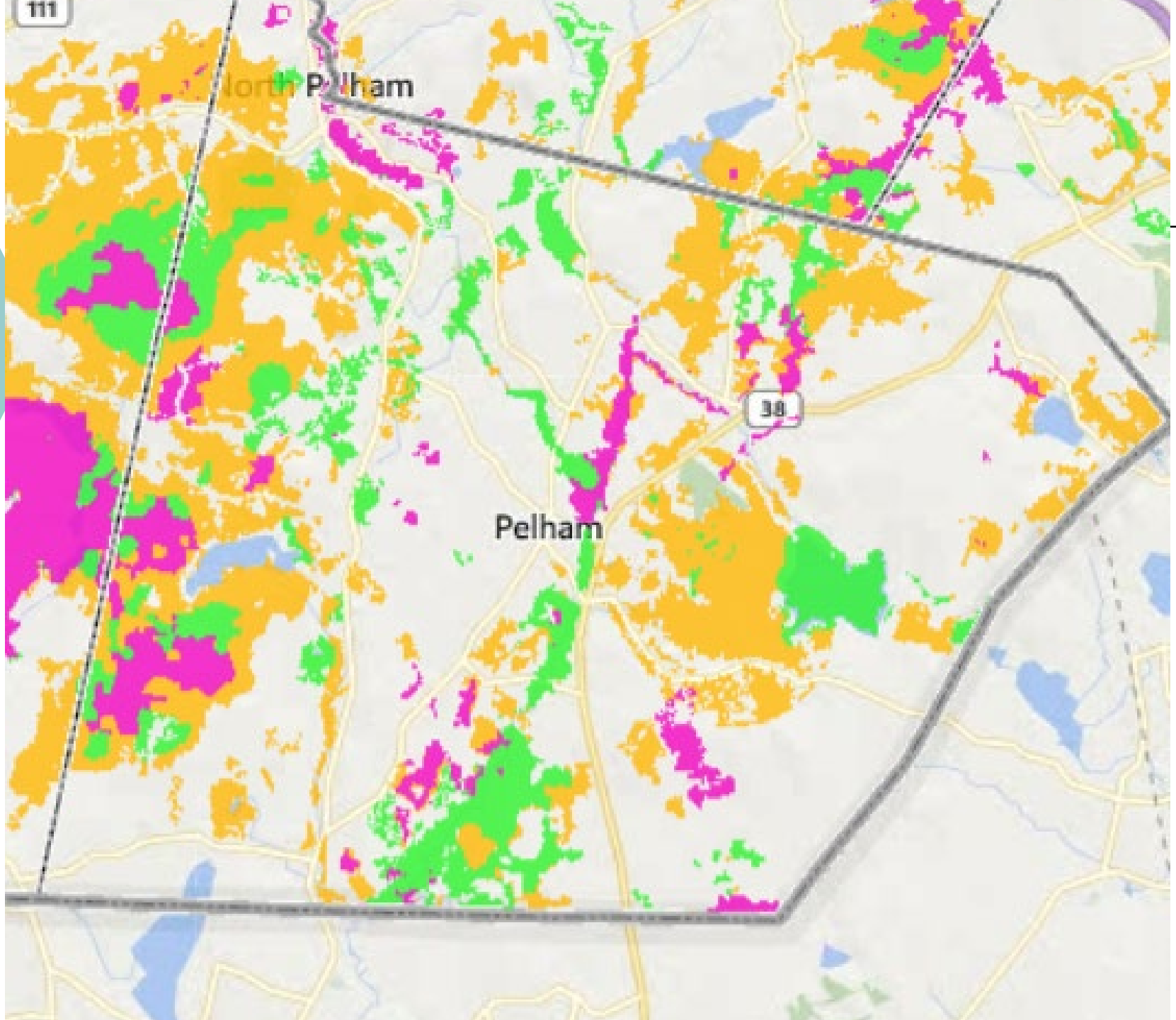
Pelham Prime Wetland Study Map

West Environmental Inc. 2024

Total area of wetlands assessed: ~206 acres







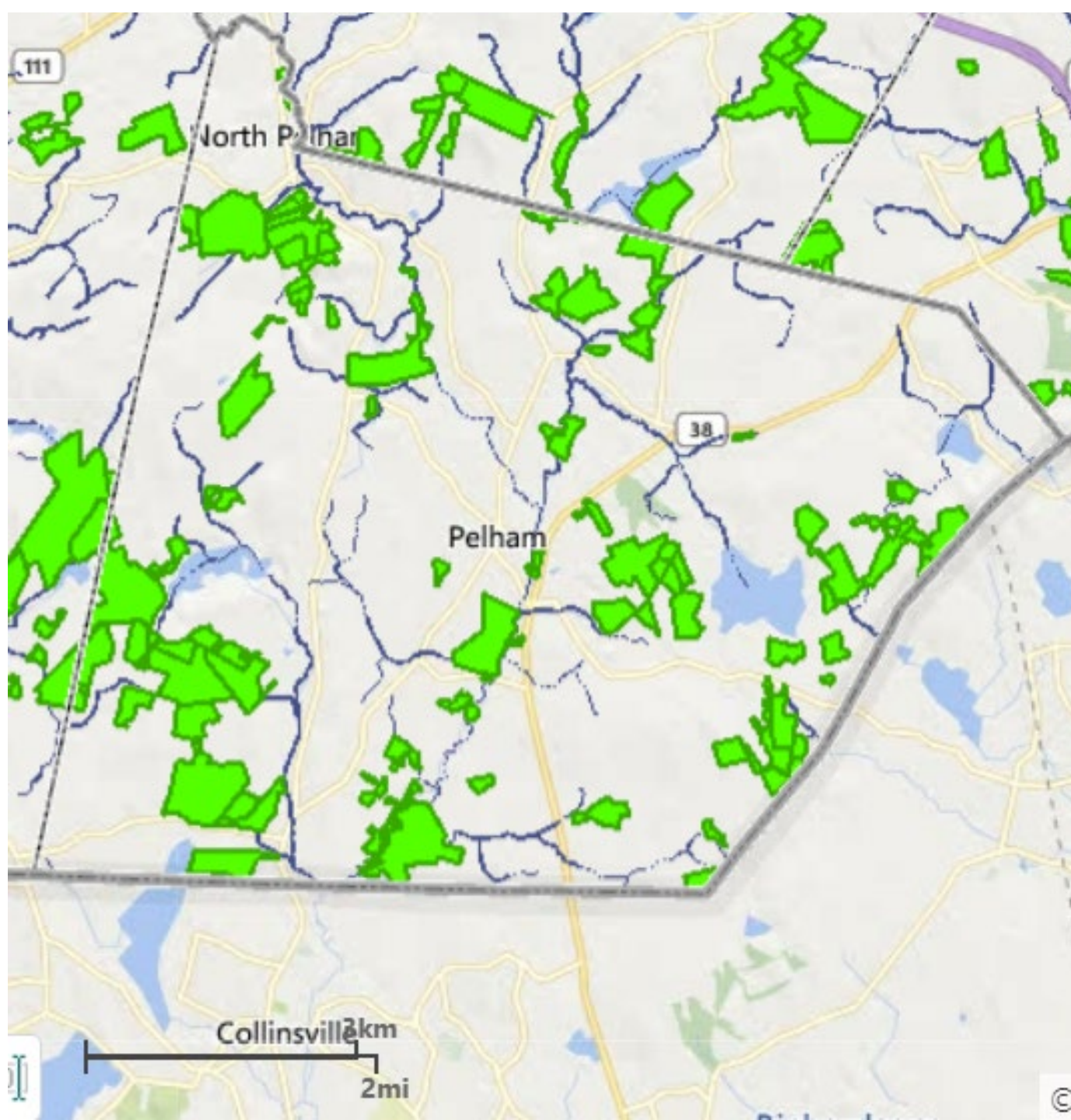


Table 1. Area of each wetland in acres after being remapped by West Environmental Inc. 2024.

Wetland	F	H	N	P	Q	R1	R2	V
Acres	24.9	23.6	6.3	26.9	12.8	69.1	22.2	19.9

New Hampshire Method Summary Results



Wetland Functions & Scores	Wetland F	Wetland H	Wetland N	Wetland P	Wetland Q	Wetland R1	Wetland R2	Wetland V
1. ECOLOGICAL INTEGRITY	7.5	7	9.5	6.3	5.9	5	5.9	5.4
2. WETLAND WILDLIFE HABITAT	6.4	4.9	7.2	6.3	5.9	4.4	5	3.9
3. FISH & AQUATIC HABITAT	5.6	1.7	3.8	3.1	3.7	4.5	4.1	3
4. SCENIC QUALITY	3.8	2.3	4.5	6.8	6.8	8.5	8.5	3.8
5. EDUCATIONAL POTENTIAL	3.5	2.1	5.7	3.8	3.8	6.9	6.5	2.6
6. WETLAND-BASED RECREATION	2.7	1.2	5.3	3.4	2.5	8	5.6	1.5
7. FLOODWATER STORAGE	2.7	2.8	2.2	2.7	2.4	3.9	3.4	2.7
8. GROUNDWATER	4.4	4.2	0.8	5.2	5.2	5	6.2	3.4
9. SEDIMENT TRAPPING	4.2	8.3	6.2	6.2	7	5.1	6.2	5.5
10. NUTRIENT TRANSFORMATION	5.4	5.2	6.8	4	6.9	6.8	6.8	5.6
11. SHORELINE ANCHORING	7.5	2.8	7.8	6.3	7.5	7.5	8.8	6.5
12. NOTEWORTHINESS	20	10	20	10	20	30	30	10



Pelham Prime Wetland Study Map

West Environmental Inc. 2024

Area of F: ~ 24.9 acres

F



0 250 500 ft

Legend:

-  Wetlands Inventoried 2024
-  Pelham Streams (GRANIT)

Pelham Prime Wetland Study Map

West Environmental Inc. 2024

Area of F: ~ 24.9 acres

F



0 250 500 ft

Legend:

- ▭ Wetlands Inventoried 2024
- Pelham Streams (GRANIT)

Pelham Prime Wetland Study Map

West Environmental Inc. 2024

Area of H: ~ 23.6 acres

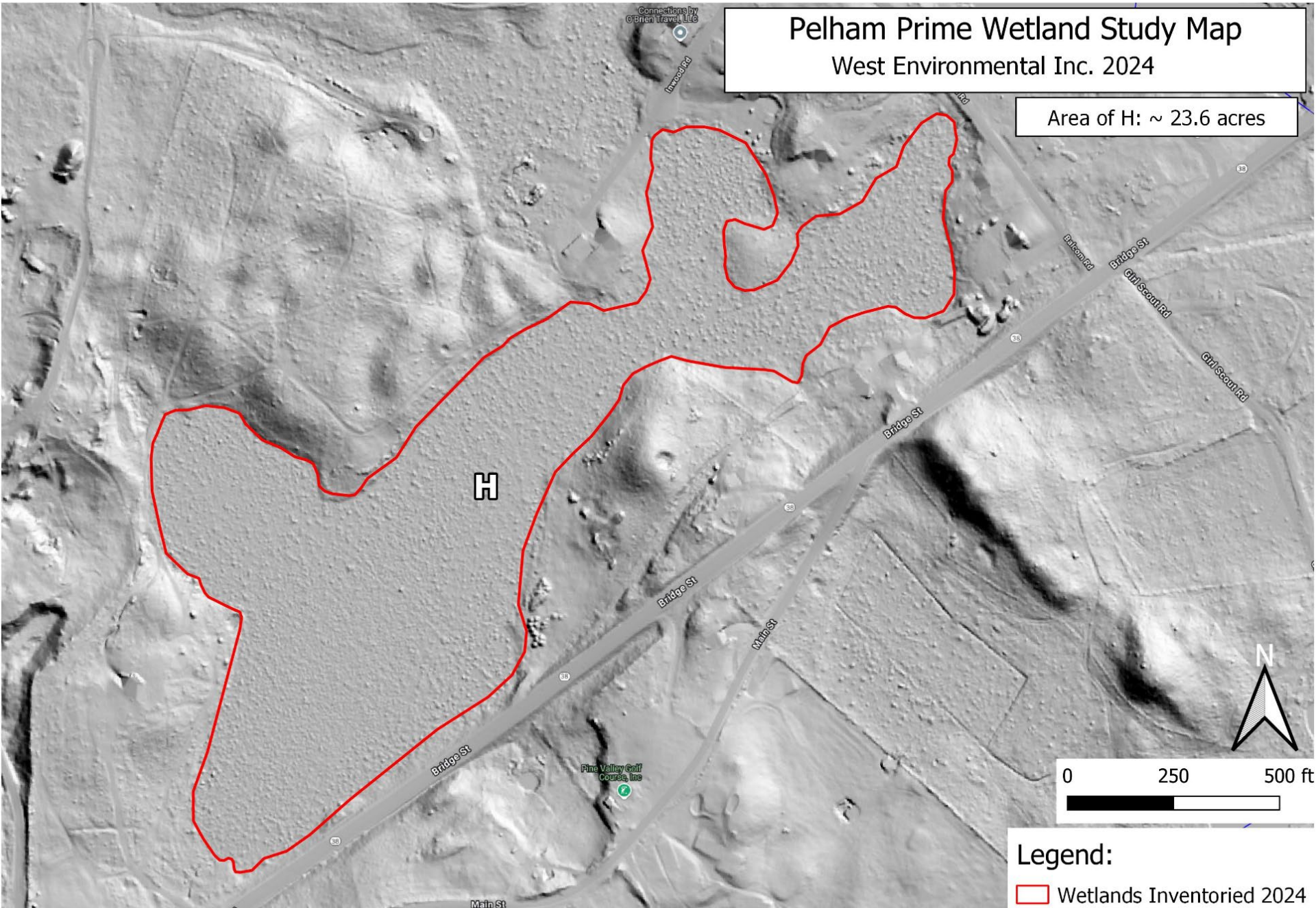
H



0 250 500 ft

Legend:

Wetlands Inventoried 2024

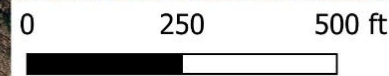


Pelham Prime Wetland Study Map

West Environmental Inc. 2024

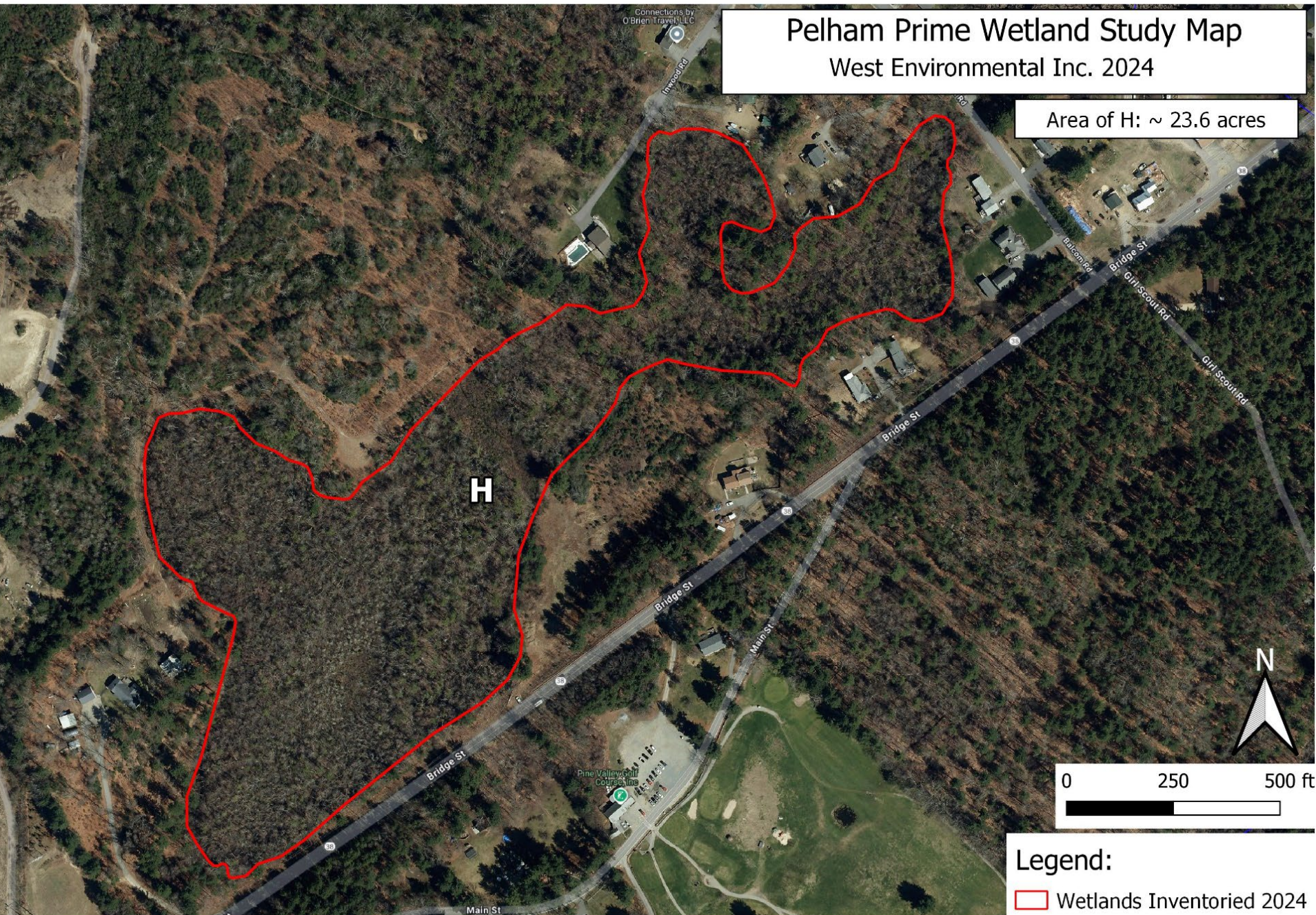
Area of H: ~ 23.6 acres

H



Legend:

Wetlands Inventoried 2024



Pelham Prime Wetland Study Map

West Environmental Inc. 2024

Area of N: ~6.3 acres

N

N

Hinds Ln

Hinds Ln

0 250 500 ft

Legend:

- Wetlands Inventoried 2024
- Pelham Streams (GRANIT)

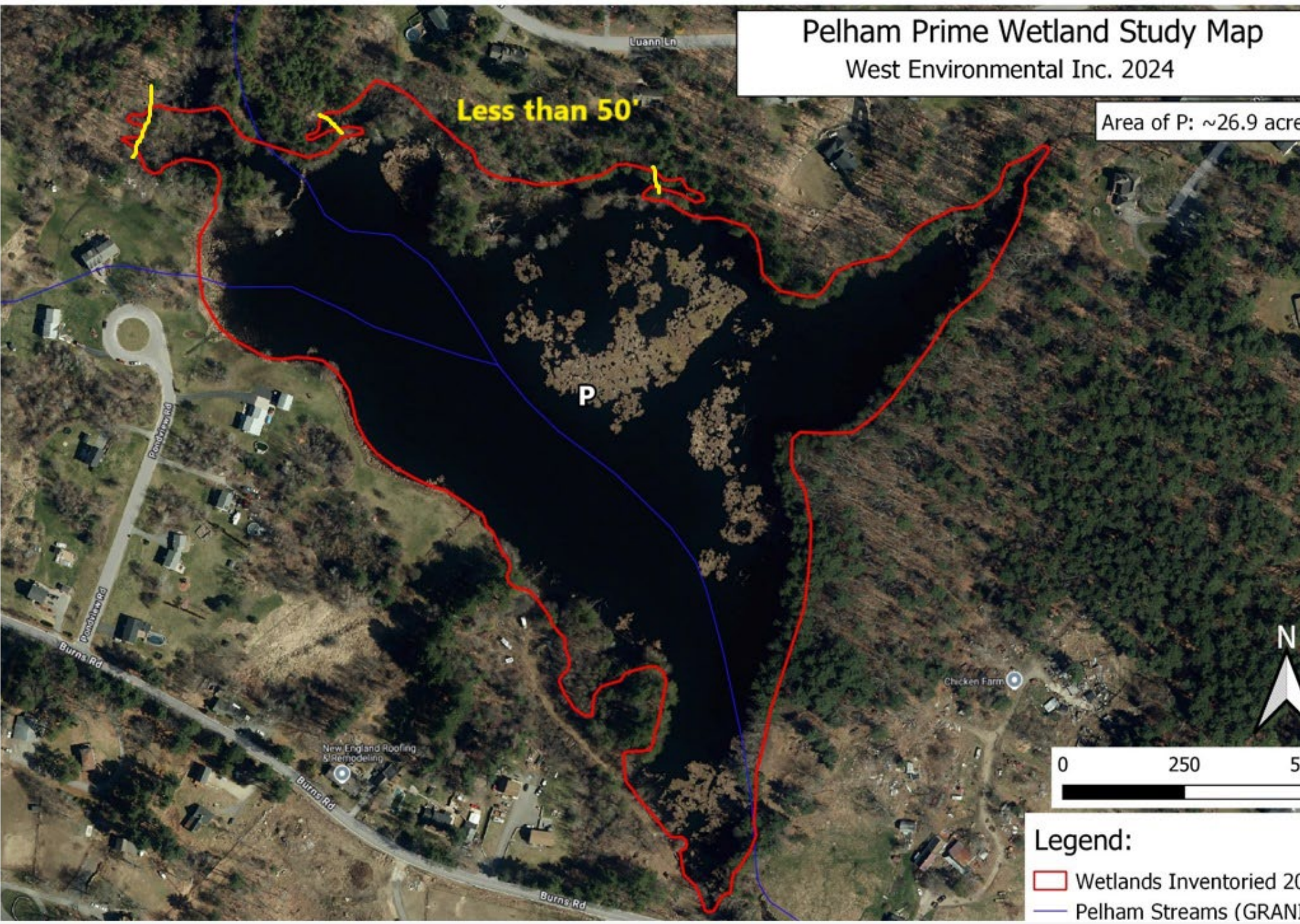
Pelham Prime Wetland Study Map

West Environmental Inc. 2024

Area of P: ~26.9 acres

Less than 50'

P



Legend:

- Wetlands Inventoried 20
- Pelham Streams (GRAN

Pelham Prime Wetland Study Map

West Environmental Inc. 2024

Area of P: ~26.7 acres

P



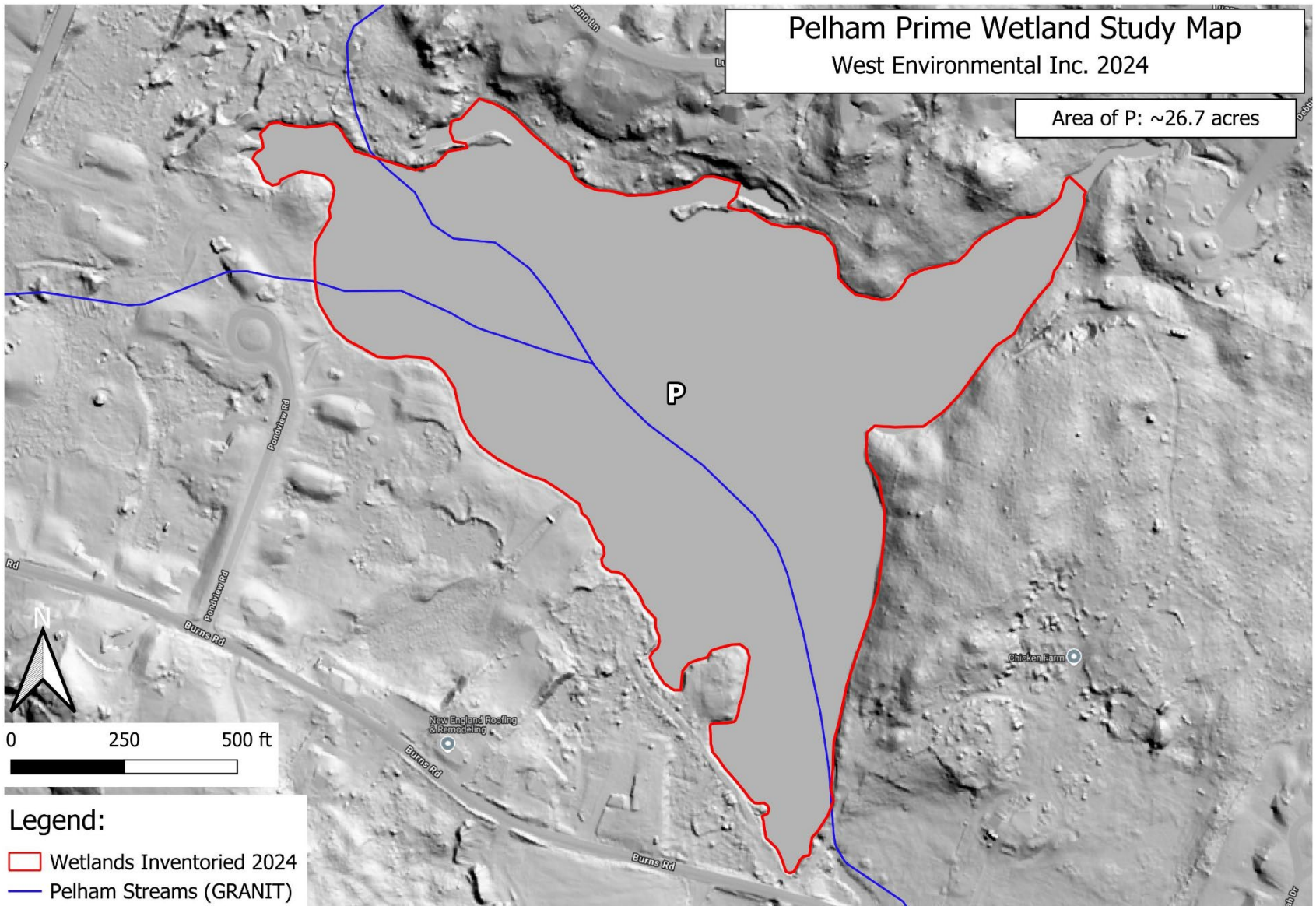
0 250 500 ft



Legend:

Wetlands Inventoried 2024

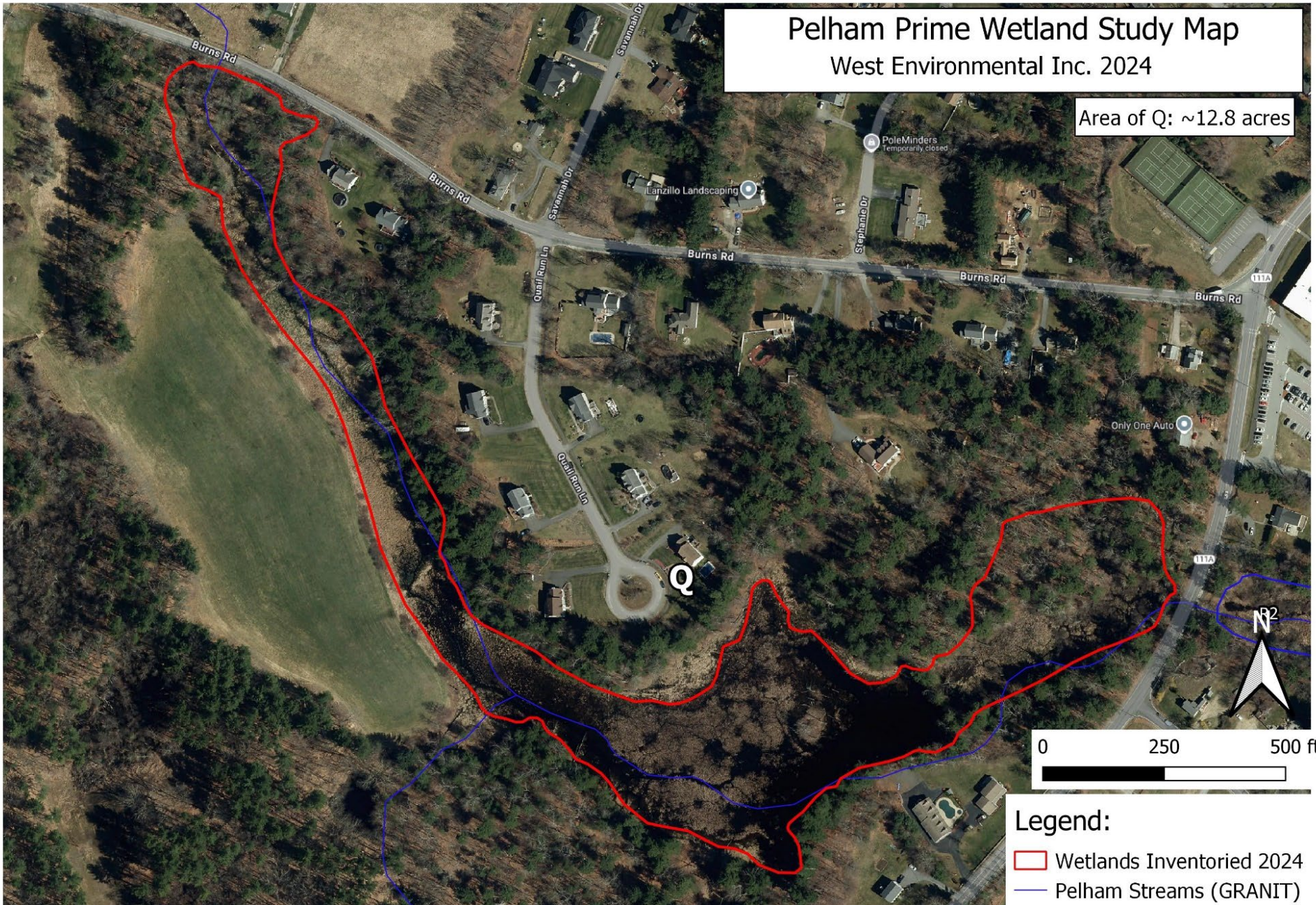
Pelham Streams (GRANIT)



Pelham Prime Wetland Study Map

West Environmental Inc. 2024

Area of Q: ~12.8 acres



Legend:

- Wetlands Inventoried 2024
- Pelham Streams (GRANIT)

Pelham Prime Wetland Study Map West Environmental Inc. 2024

Area of R1: ~69.1 acres



Legend:

- Wetlands Inventoried 2024
- Pelham Streams (GRANT)





Pelham Prime Wetland Study Map

West Environmental Inc. 2024

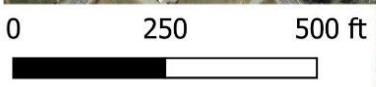
Area of R2: ~22.2 acres

R1

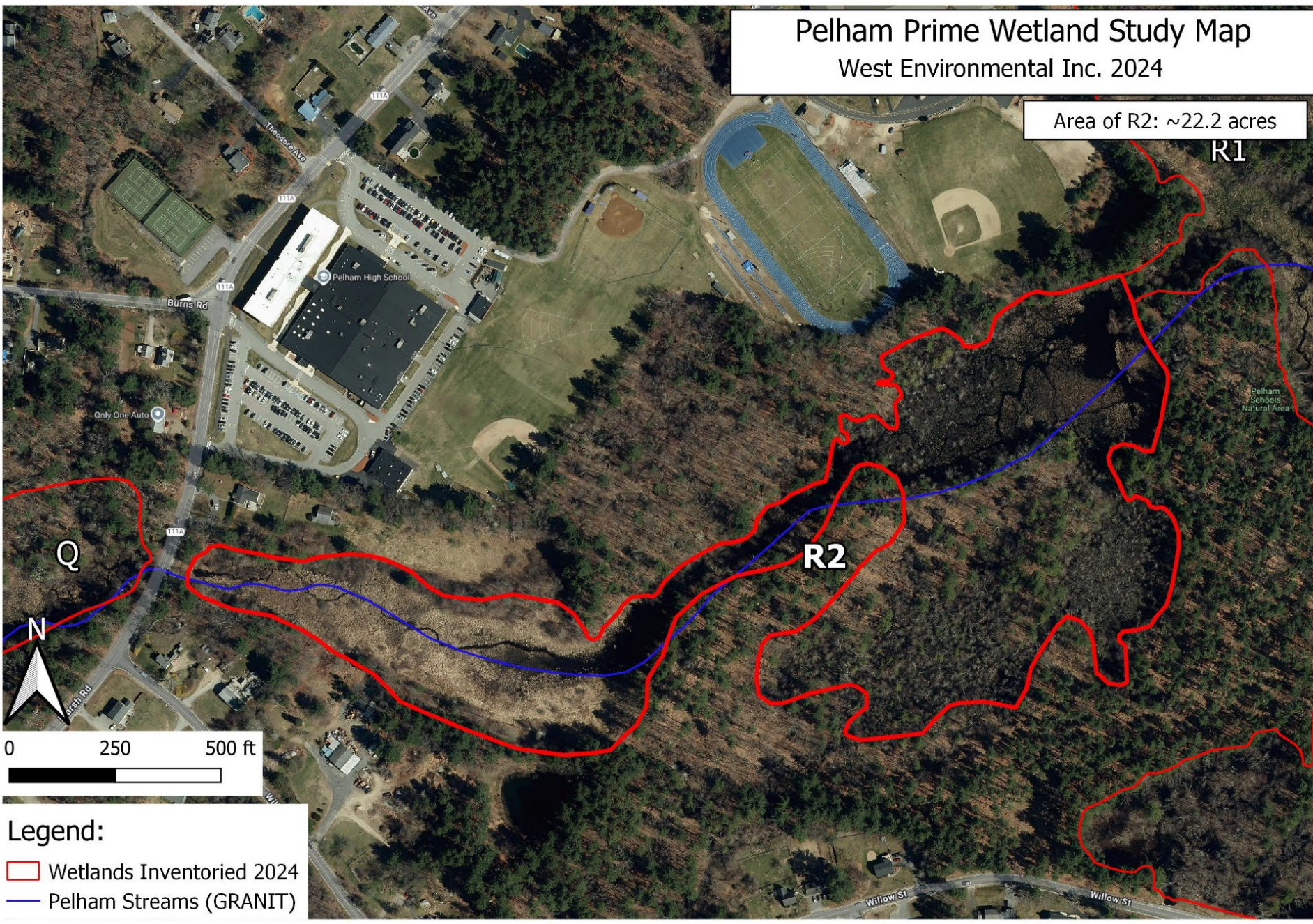
R2

Q

Pelham
School's
Natural Area

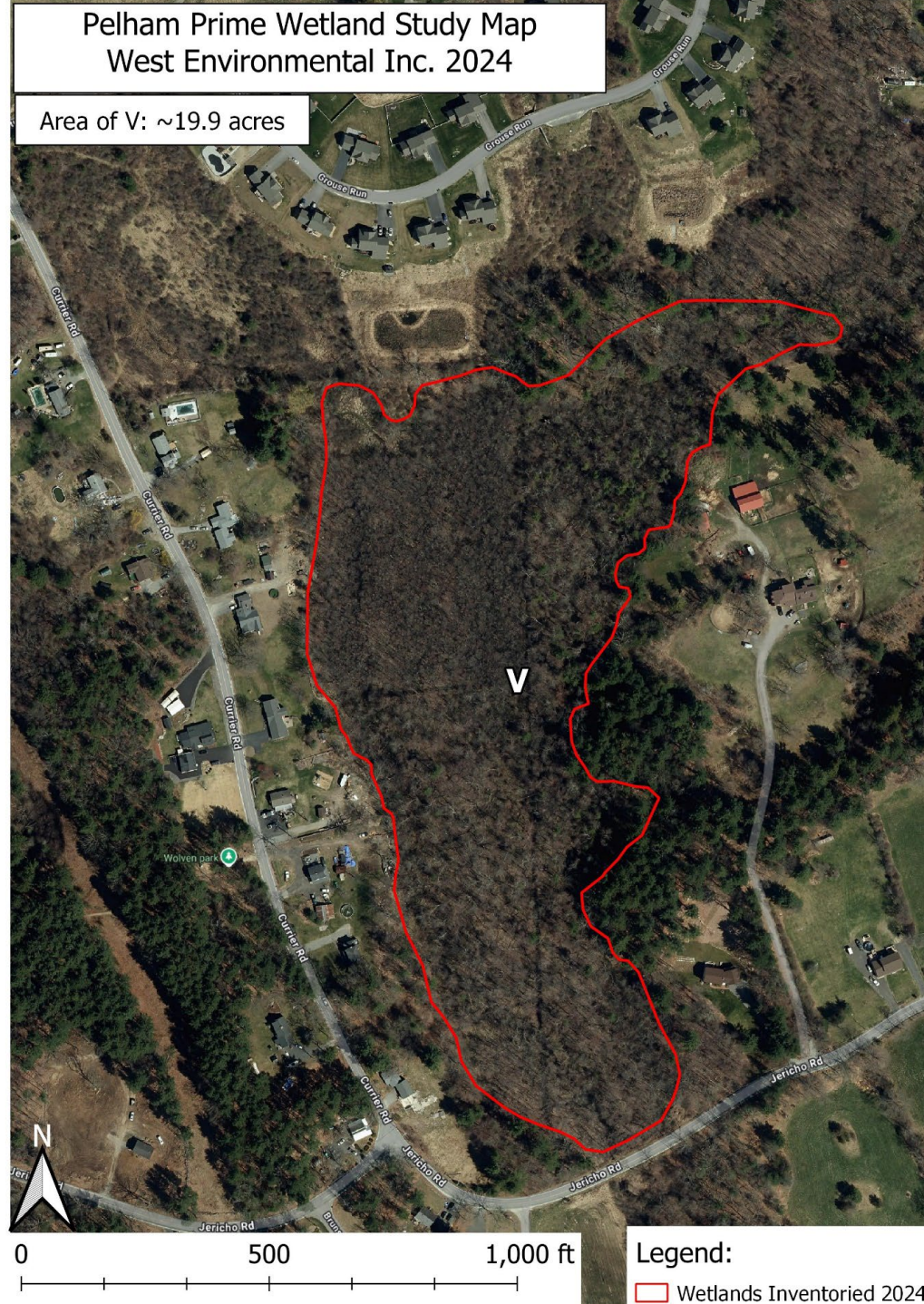


- Legend:**
- Wetlands Inventoried 2024
 - Pelham Streams (GRANIT)




Pelham Prime Wetland Study Map West Environmental Inc. 2024

Area of V: ~19.9 acres

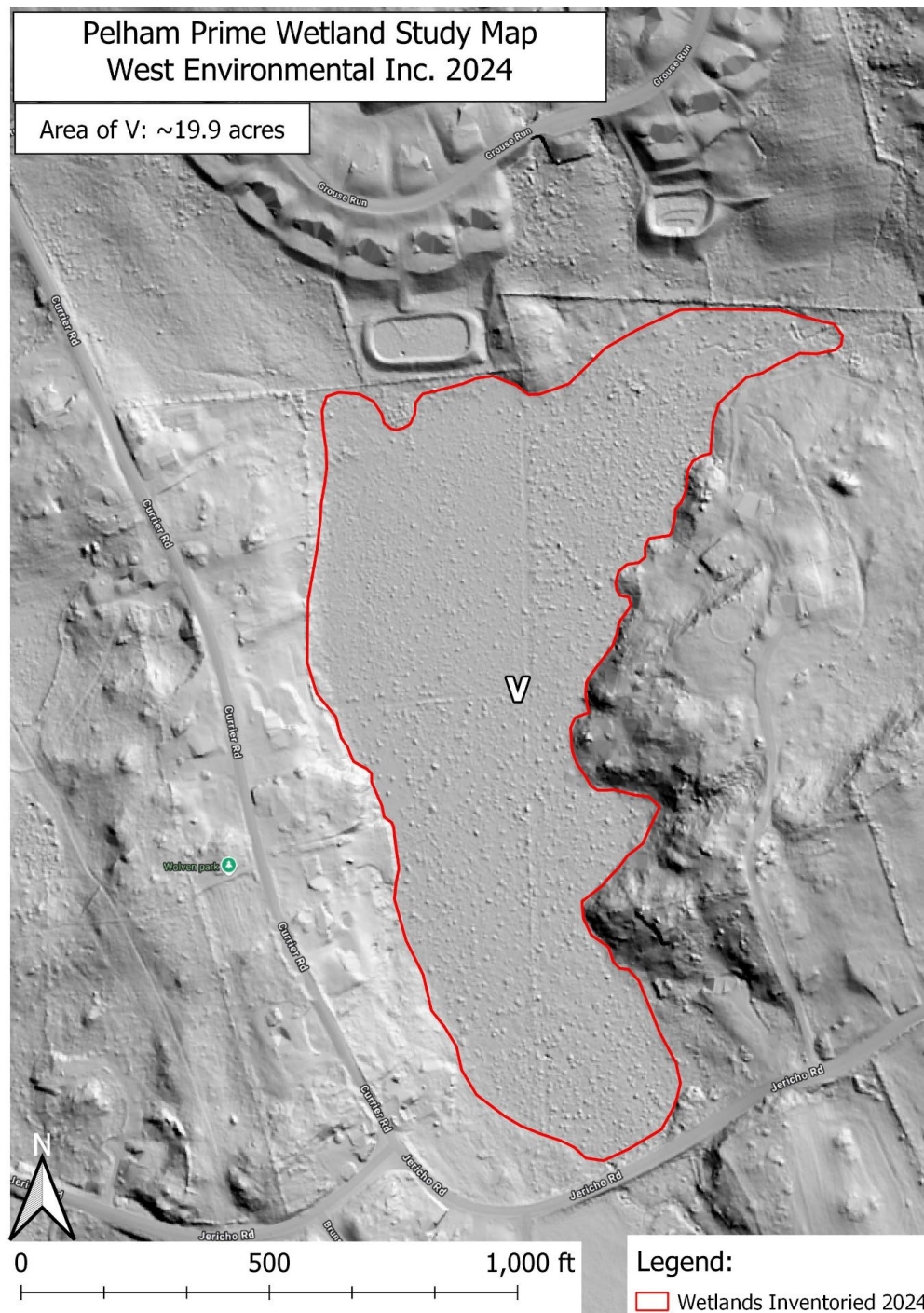


Legend:

 Wetlands Inventoried 2024

Pelham Prime Wetland Study Map West Environmental Inc. 2024

Area of V: ~19.9 acres





Legend:


Wetlands Inventoried 2024




○ Questions ?

- 
- (a) The local authority shall:
 - (1) Use the most accurate maps available, verifying the boundaries of proposed prime wetlands with an on-site review where landowner permission is provided;
 - (2) Mark state plane coordinate reference points based on the State Plane Coordinate System 1983 on the map;
 - (3) Clearly identify and separately label each prime wetlands on the map; and
 - (4) Use a blue or black line to denote the boundaries of the prime wetlands;
 -

- 
- (b) Each map shall be on one or more sheets that:
 - (1) Do not exceed 28 inches by 40 inches; and
 - (2) Have a one-inch border and a title block with scale and legend;
 - (c) The scale of the map shall be one inch equals 1,000 feet or a scale that provides greater detail; and
 - (d) The map(s) shall show:
 - (1) The exterior boundary of each delineated prime wetlands; and
 - (2) Property boundaries and parcel ID numbers.

- 
-
- Env-Wt 703.03 Report Requirements. The written report required by Env-Wt 703.01(b) shall:
 - (a) Correlate each prime wetlands by name or number to the map(s) submitted pursuant to Env-Wt 703.01(a);
 - (b) Describe the methods used to delineate the boundaries of the prime wetlands and evaluate the functions and values of the prime wetlands;

- 
- (c) Present the specific functions and values ~~evaluation data for each prime wetland;~~
 - (d) Provide baseline documentation of the existing wetland condition that includes the following:
 - (1) Photos of each prime wetlands showing representative natural community systems; and
 - (2) The location of protected lands, town parks, town forests, buildings, and infrastructure in relation to the prime wetlands being designated.