



# 2024 Prime Wetland Mapping & Evaluation

Town of Pelham

Prepared by



48 Stevens Hill Road, Nottingham, NH 03290

December 2024

**Table of Contents**

<b>1. Introduction .....</b>	<b>3</b>
<b>2. Methodology.....</b>	<b>4</b>
<b>Wetland Mapping .....</b>	<b>4</b>
<b>Wetland Functional Assessment .....</b>	<b>4</b>
<b>3. Prime Wetland Candidates .....</b>	<b>5</b>
<b>New Hampshire Method Summary Results .....</b>	<b>Error! Bookmark not defined.</b>
<b>Wetland F .....</b>	<b>7</b>
<b>Wetland H .....</b>	<b>11</b>
<b>Wetland N .....</b>	<b>15</b>
<b>Wetland P .....</b>	<b>18</b>
<b>Wetland Q .....</b>	<b>23</b>
<b>Wetland R1.....</b>	<b>25</b>
<b>Wetland R2.....</b>	<b>33</b>
<b>Wetland V.....</b>	<b>35</b>
<b>APPENDIX.....</b>	<b>40</b>

## 1. Project Summary

West Environmental, Inc. (WEI) has prepared this report to provide documentation to support the designation of prime wetlands in the Town of Pelham, New Hampshire. This project was based on a Wetland Inventory that included mapping and wetland functional assessments of nine individual wetlands that met the requirements of RSA 482-A:15 and Chapter Wt 700 of the NHDES Wetlands Bureau Administration Rules. WEI worked closely with the Pelham Conservation Commission to review the technical criteria for Prime Wetland Designation.

RSA 482-A:15 defines “Prime Wetlands” as jurisdictional wetlands that “because of their size, unspoiled character, fragile condition or other relevant factors, make them of substantial significance.”

Env-Wt 701.03 Applicable Statutory Parameters requirements established for prime wetlands are:

1. To be at least 2 acres in size;
2. To not consist of a water body only;
3. To have at least 4 primary wetland functions, one of which must be wildlife habitat;
4. And to be at least 50 feet wide at its narrowest point.

The regulation further indicates that the prime wetland candidates shall be evaluated as follows:

- a. For non-tidal wetlands, the “Method for Inventorying and Evaluating Wetlands in New Hampshire” dated 2015.

The proposed Prime Wetland Candidates identified in Section 3 of this report meet all qualifications for Prime Wetland status.

West Environmental recommends that the Pelham Conservation Commission move forward with the designation of these eight wetlands.

## 2. Methodology

WEI completed both the field work and the map preparation. Field work was conducted in the late Summer and Fall of 2024.

### Wetland Mapping

Wetland mapping was performed reviewing 2022, and earlier, color ortho photos and 2019 LiDAR Maps. Additional mapping layers from NH's GRANIT statewide GIS clearinghouse were used to enhance the remote evaluation portion of the project. These layers include but are not limited to National Wetlands Inventory Plus, 2020 Wildlife Action Plan (WAP) Habitats and Tiers, Aquifer Transmissivity, Conservation and Public Lands, Watershed Boundaries, and the Hydrology Dataset.

Field verification was completed from public access locations in and around the wetlands. This included field verification of locations where the wetland narrowed to less than 50 feet wide. It should be noted that the prime wetland mapping represents the most accurate information available but does not constitute an on-the-ground wetland delineation. It is to be used as a guide to the limits of a wetland resource area.

Eight (8) wetlands were chosen by the Commission to be mapped and evaluated for Prime Wetland Designation. Some of the data that was collected includes:

- Soils verification
- Wetland classification
- Wetland boundary verification
- Land use in the 500-foot wetland buffer
- Existing and potential water quality impacts
- Invasive species
- Information on rare plants and wildlife
- NHDES Priority Resource Area wetlands

### Wetland Functional Assessment

The NH Method data forms were completed on all of the 8 wetlands mapped and inventoried. The wetlands were then compared in a table to determine which wetland ranked highest in wetland functions. Wetland size was also considered in the choice of the Prime Wetland candidates. The functions evaluated included the following:

1. Ecological Integrity
2. Wildlife Habitat
3. Fish and Aquatic Habitat
4. Scenic Quality
5. Educational Potential
6. Wetland Recreation
7. Flood Water Storage
8. Groundwater Recharge
9. Sediment Trapping
10. Nutrient Trapping, Retention and Transformation
11. Shoreland Anchoring
12. Noteworthiness

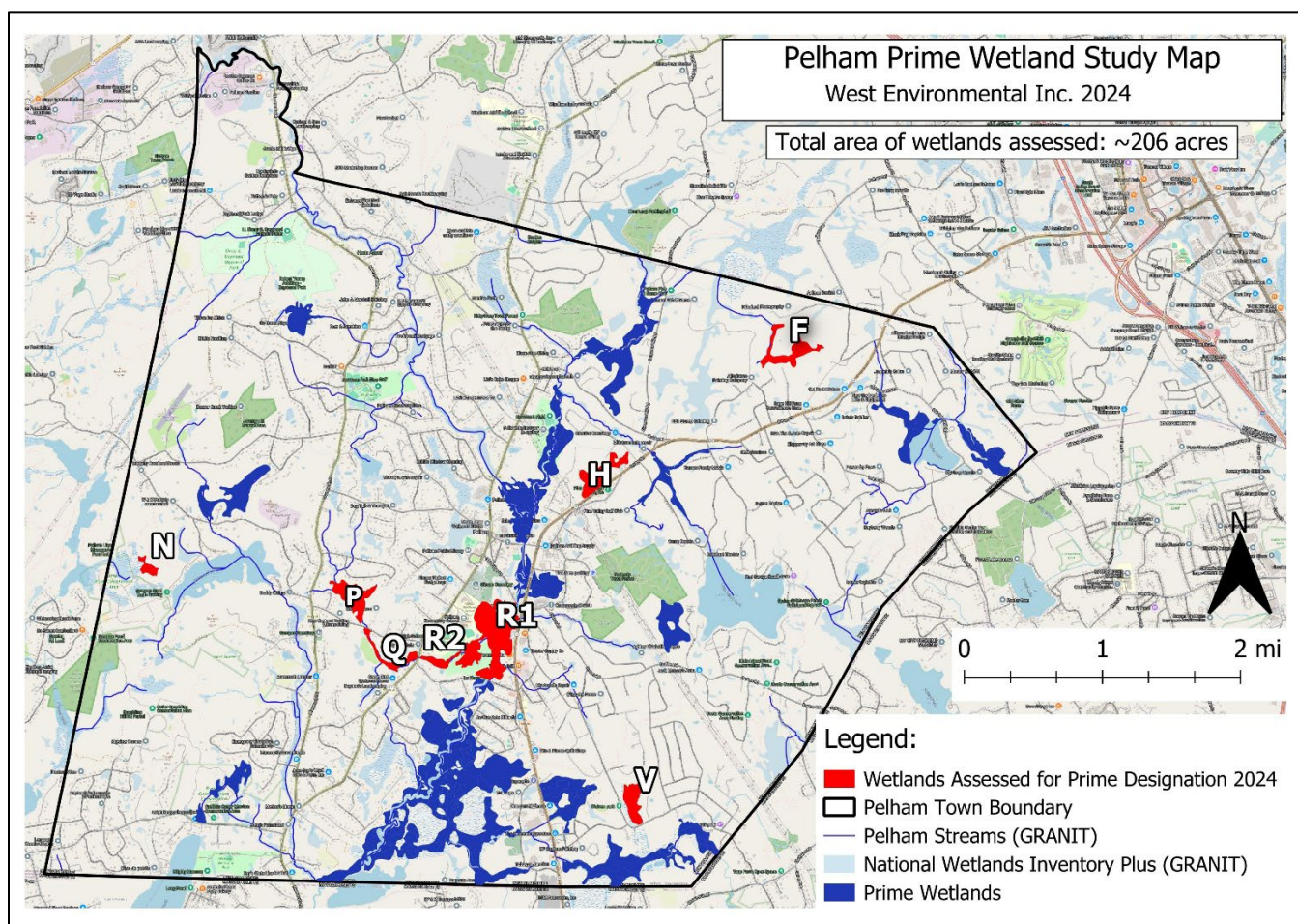


### 3. Prime Wetland Candidates

A preliminary evaluation of prime wetland candidates in Pelham resulted in twenty-six (26) wetlands that met NHDES prime wetland eligibility criteria. From those 26 wetlands, the Pelham Conservation Commission selected ten wetlands for further review and evaluation. In that process, wetland (R) was evaluated as two separate wetlands as field verification found a section of the wetland to be narrower than the 50ft requirement. Two additional wetlands were removed from the inventory due to access limitations. A total of eight wetlands are included in this report.

Table 1. Area of each wetland in acres after being remapped by West Environmental Inc. 2024.

Wetland	F	H	N	P	Q	R1	R2	V
Acres	24.9	23.6	6.3	26.7	12.8	69.1	22.2	19.9



Map showing the eight wetlands inventoried and detailed out below in this assessment.

**New Hampshire Method Summary Results**

<b>Wetland Functions &amp; Scores</b>	<b>Wetland F</b>	<b>Wetland H</b>	<b>Wetland N</b>	<b>Wetland P</b>	<b>Wetland Q</b>	<b>Wetland R1</b>	<b>Wetland R2</b>	<b>Wetland V</b>
1. ECOLOGICAL INTEGRITY	7.5	7	9.5	6.3	5.9	5	5.9	5.4
2. WETLAND WILDLIFE HABITAT	6.4	4.9	7.2	6.3	5.9	4.4	5	3.9
3. FISH & AQUATIC HABITAT	5.6	1.7	3.8	3.1	3.7	4.5	4.1	3
4. SCENIC QUALITY	3.8	2.3	4.5	6.8	6.8	8.5	8.5	3.8
5. EDUCATIONAL POTENTIAL	3.5	2.1	5.7	3.8	3.8	6.9	6.5	2.6
6. WETLAND-BASED RECREATION	2.7	1.2	5.3	3.4	2.5	8	5.6	1.5
7. FLOODWATER STORAGE	2.7	2.8	2.2	2.7	2.4	3.9	3.4	2.7
8. GROUNDWATER	4.4	4.2	0.8	5.2	5.2	5	6.2	3.4
9. SEDIMENT TRAPPING	4.2	8.3	6.2	6.2	7	5.1	6.2	5.5
10. NUTRIENT TRANSFORMATION	5.4	5.2	6.8	4	6.9	6.8	6.8	5.6
11. SHORELINE ANCHORING	7.5	2.8	7.8	6.3	7.5	7.5	8.8	6.5
12. NOTEWORTHINESS	20	10	20	10	20	30	30	10



## Wetland F

(PEM1/FO1/4E)

Wetland F includes both forested swamp and shallow marsh wetland areas. The wetland is approximately 25 acres as mapped and is located in the 11,978 acre Golden Brook Watershed (HUC-12) in the northeast quadrant of Pelham. The wetland is mostly surrounded by forest owned by the Pelham Fish & Game Club with a few residential properties in its adjacency. The entirety of the wetland lies in Wildlife Action Plan (WAP) habitat ranked Tier 3. A 1<sup>st</sup> order stream flows through Wetland F. The wetland features very poorly drained soils.

**Canopy:** Red Maple forest and a few white pine

**Shrub:** sparse *glossy buckthorn*<sup>1</sup>

**Herbaceous:** Cattails (dominant), woolgrass bulrush (dominant), American burnweed, *purple loosestrife*, sensitive fern, false nettle, cinnamon willow herb, rattlesnake mannagrass, tearthumb, goldenrod, queen anne's lace, other sedges and grasses.

**Wildlife habitat exists to support:** red winged black bird, wading birds, beaver, mink, mice, muskrat, turtles, snakes, frogs.



View north of cattail and wool grass marsh in the southwestern part of Wetland F showing snags and songbird boxes in the distance for wildlife habitat present.

---

<sup>1</sup> Invasive species are italicized in this document for the convenience of the reader.





View west of southwestern area of Wetland F with shallow marsh wetland community.











## Wetland H

(PFO1/4E/EM1E/SS1E)

Wetland H is approximately 24 acres in size and is located in the 11,978 acre Golden Brook Watershed (HUC-12) in the north central part of Pelham. The wetland is on very poorly drained soils and is flanked by forested upland, residential development and Bridge St/Route 38, a class II road. This wetland has vernal pool habitat and floods up to two feet deep. The majority of the wetland lies in wildlife habitat ranked Tier 3. Wetland H is within 1000ft of Golden Brook which is a 3<sup>rd</sup> order stream that flows into Beaver Brook a 4<sup>th</sup> order stream and the largest watercourse in the town.

**Canopy:** Red maple and a few white pine

**Shrub:** High bush blueberry, winterberry, wild raisin, *glossy buckthorn*

**Herbaceous:** Cinnamon fern, royal fern, marsh fern, jewel weed, wood reed, skunk cabbage

**Wildlife:** Vernal pool habitat, adult wood frogs, veery, hairy woodpecker.



Wetland H is a mature red maple swamp with a closed canopy.



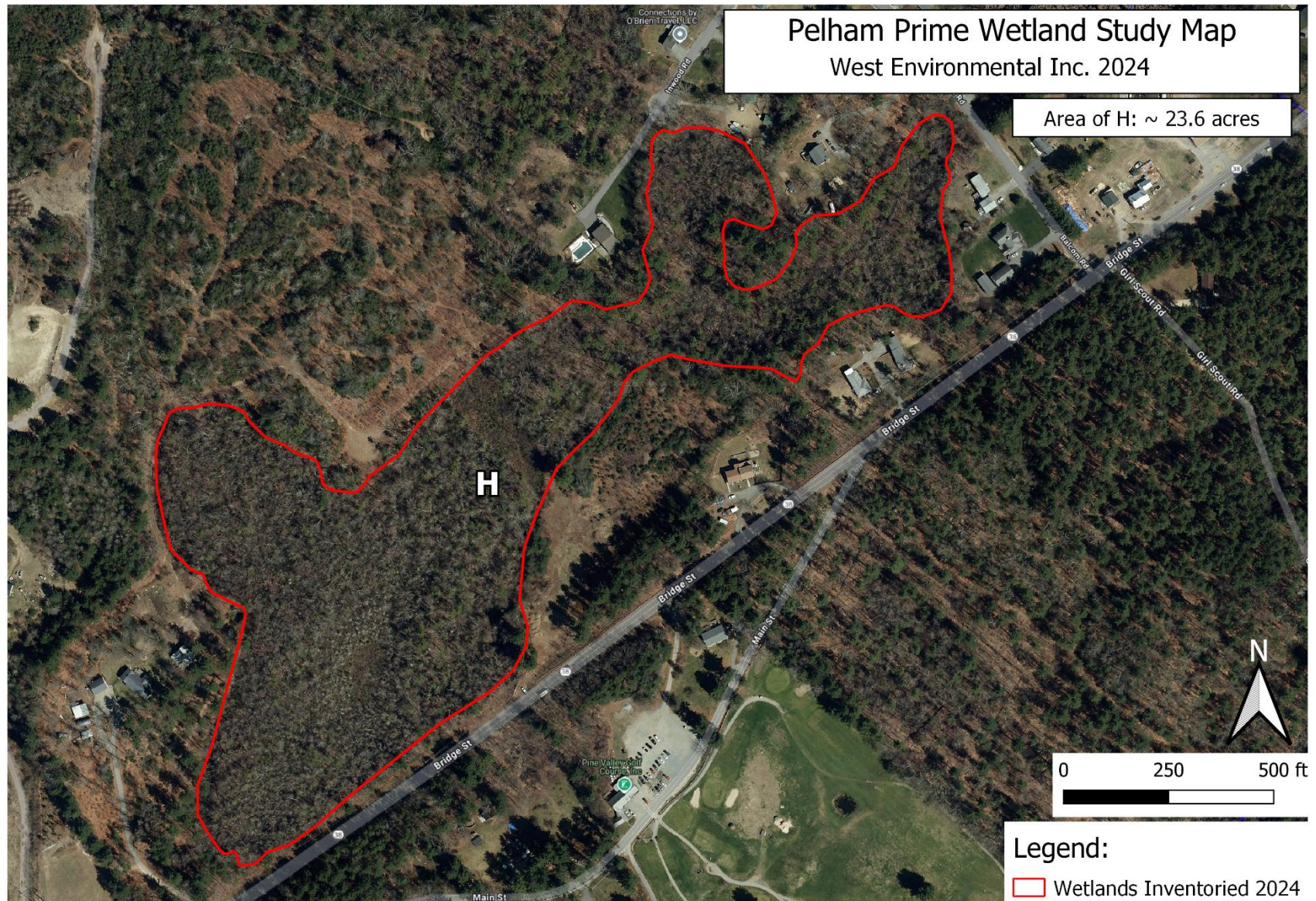


See vernal pool habitat in the background center.

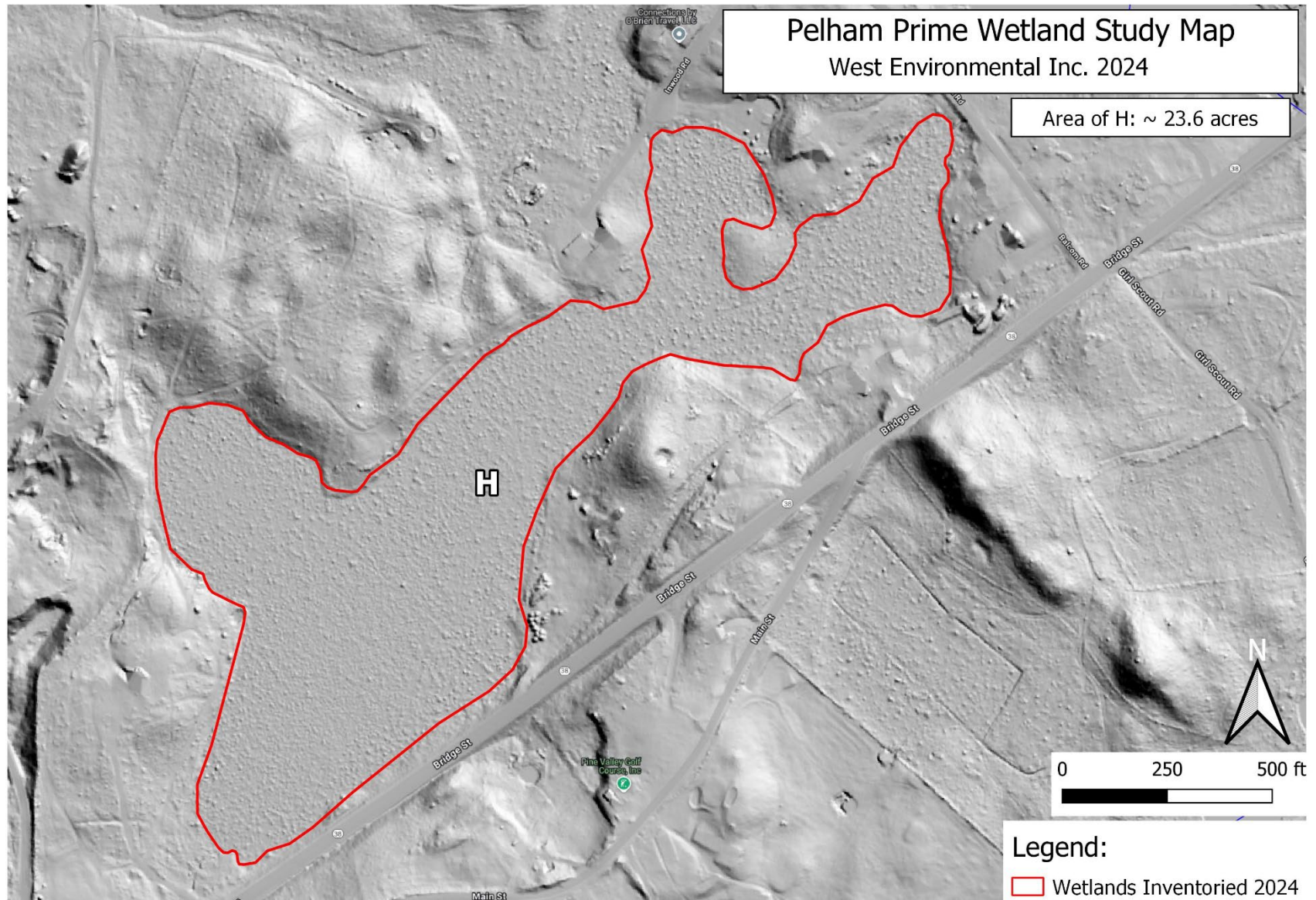


Standing water was still present at the end of August.









## Wetland N

(PFO4/1Eb)

Wetland N is one of several wetlands in a larger group of wetlands, some of which are protected as the Gumpas Pond Reservation Area. The reservation area borders Wetland N to the south and west, while Pelham owns the forested land to the east. To the north, the forested area is privately owned. Spanning approximately 6 acres, Wetland N lies within the 36,650-acre Limit Brook-Merrimack River Watershed (HUC-12). Half of Wetland N is designated as Tier 1 wildlife habitat, while the other half is classified as Tier 3. This wetland has potential vernal pool habitat and floods up to three feet deep.

**Canopy:** Red maple and a few white pines

**Shrub:** Winterberry (dominant), male berry, elderberry, blueberry, *glossy buckthorn*, sheep laurel and witch hazel (in upland areas)

**Herbaceous:** Common boneset, swamp dewberry, golden rod, American burreed, willowherb, woolgrass, marginal wood fern, sedges

**Wildlife:** Chipmunks, otters, woodpecker, hawk blue jay, black-capped chickadee, house finch, tufted titmouse, white-breasted nuthatch and American goldfinch.

**Habitat exists to support:** Vernal pool habitat, waterfowl, beavers, muskrat, mice, mink, snakes, and frogs.



View of Wetland N from southeast corner looking northwest across the shrub wetland area.



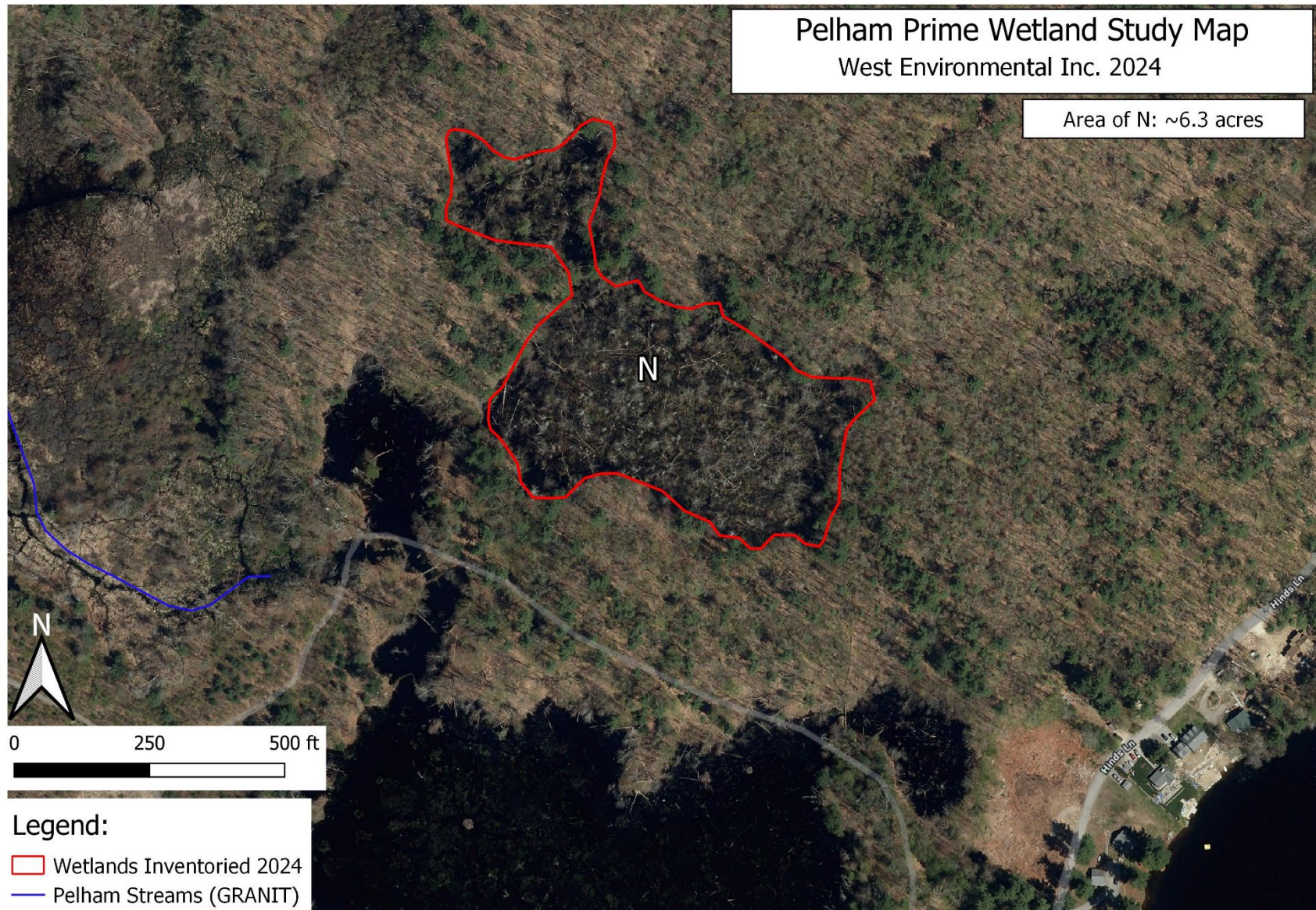


View from the western side of the shrub wetland area of organic bottom standing water and coarse woody debris.

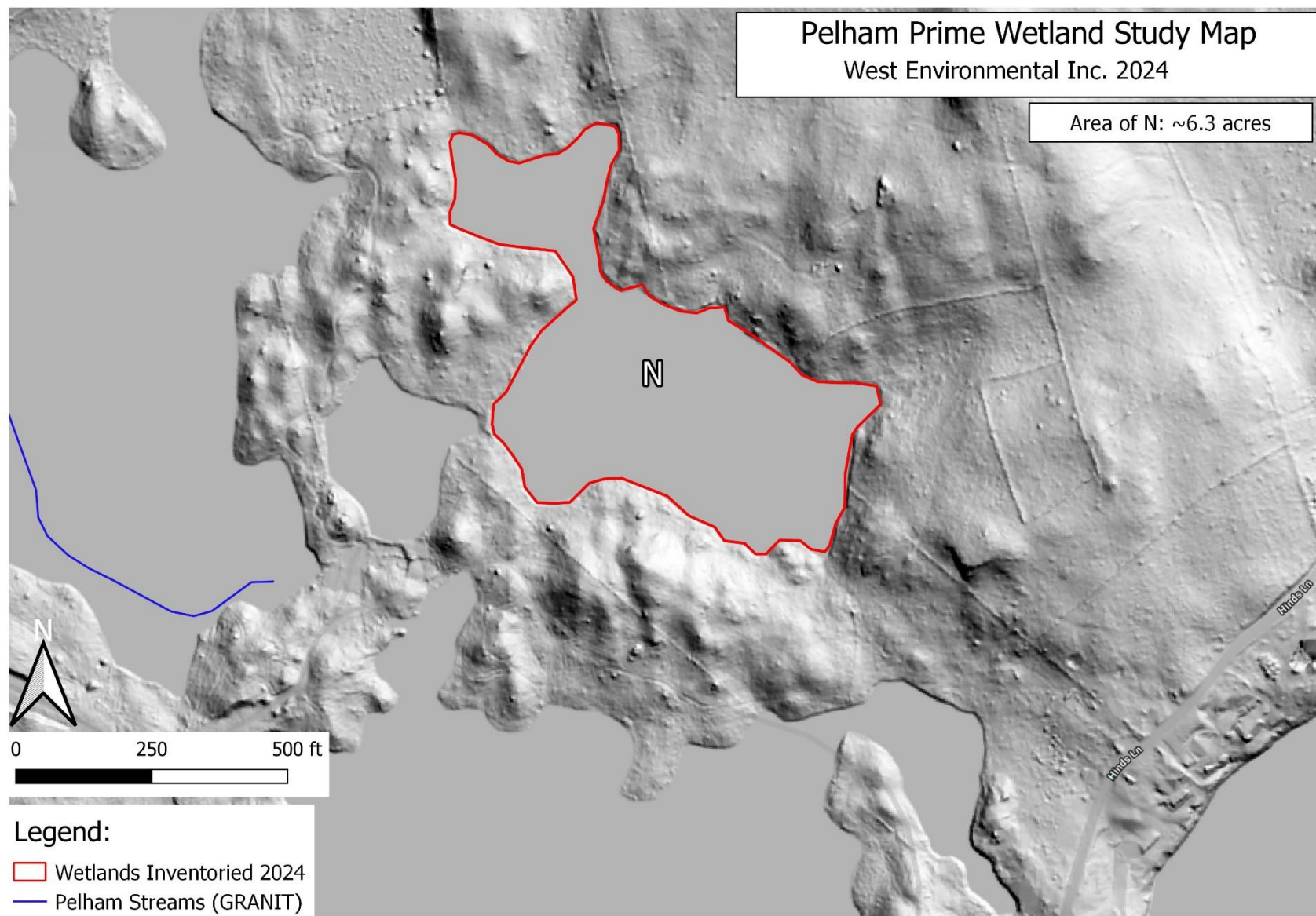


View of foot bridge and trail near the southwest edge of Wetland N. Slow moving water flows between the wetland complexes under this bridge. This area is less than 50' across and is therefore not within Wetland N for the purposes of this review.









## Wetland P

(PAB/EM/SSHh)

Wetland P is approximately 27 acres, is located in central Pelham, and is within the 13,690 acre Lower Beaver Brook Watershed (HUC-12). Wetland P sits on very poorly drained soils and is surrounded by residential development and some forest. A 2<sup>nd</sup> order stream flows through Wetland P, into Wetlands Q, R1 and R2 where it joins with Beaver Brook, a 4<sup>th</sup> order stream, and the largest watercourse in the town of Pelham.

**Canopy:** Red maple and a few dead white pine on the edges.

**Shrub:** Buttonbush, pussy willow and elderberry

**Herbaceous:** Cattails, *purple loosestrife*, woolgrass, jewelweed, tear thumb, boneset

**Wildlife:** Geese, bull frogs

**Habitat exists to support:** red-wing blackbird, waterfowl, beaver, mink, mice, muskrat, turtles, snakes and frogs.



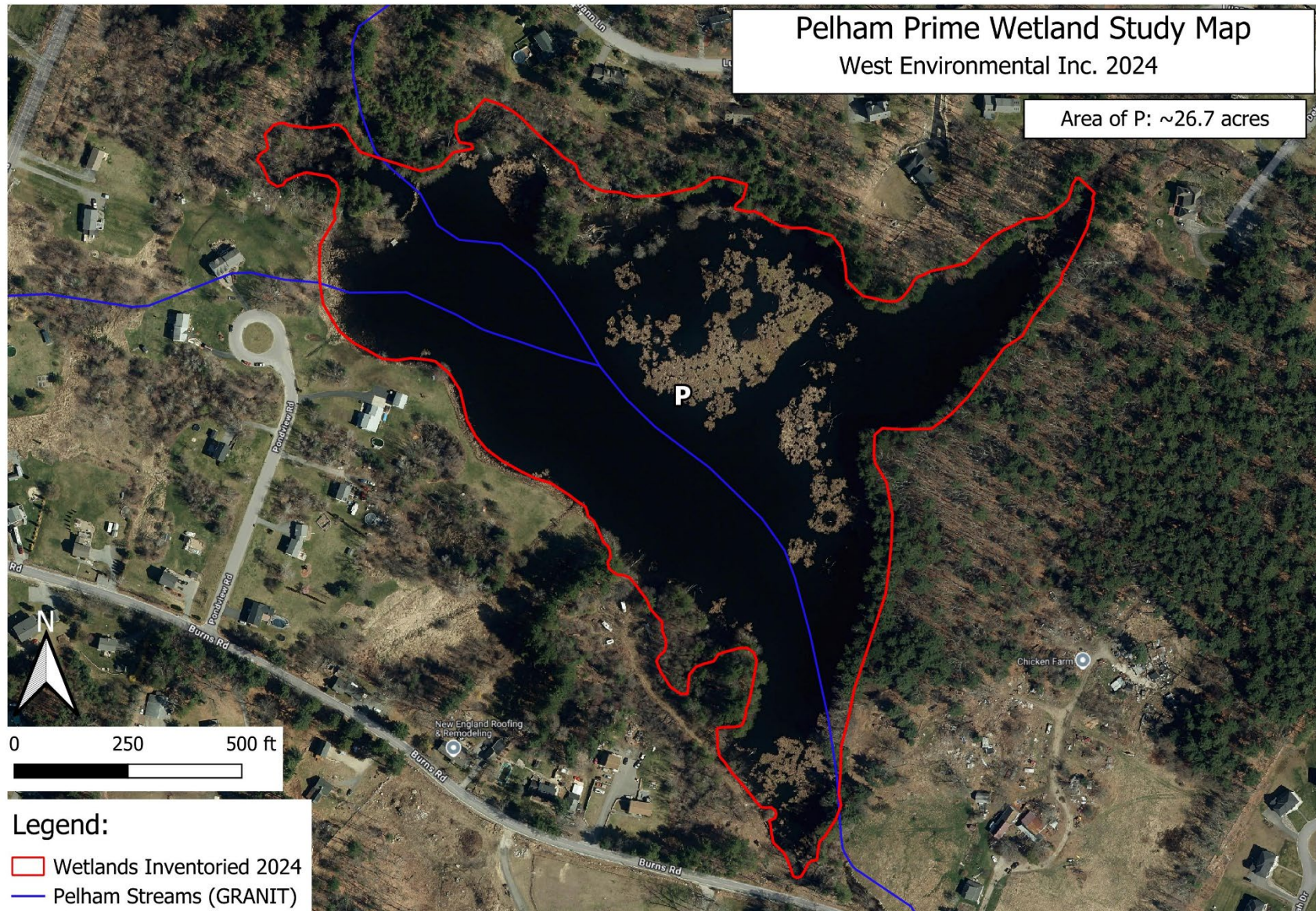
View east of marsh and open water habitat of Wetland P beyond the mowed lawn from the eastern end of the wetland.



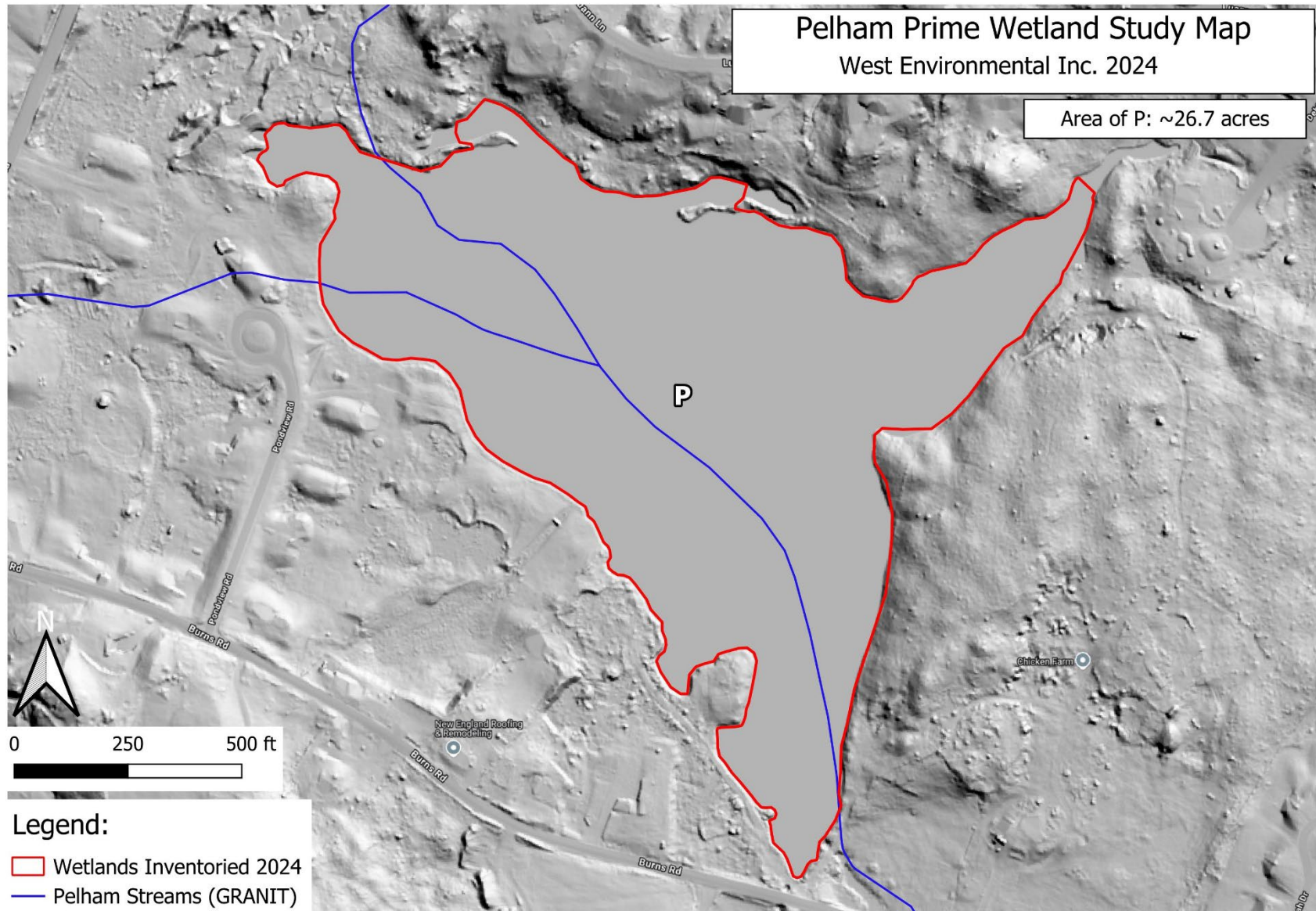


View north of marsh and open water habitat of Wetland P from the south section of the wetland.











## Wetland Q

(PEM1/SS1/FO1Eb/ABHb)

Wetland Q is approximately 13 acres in size and lies within the 13,690 acre Lower Beaver Brook Watershed (HUC-12) in the central part of Pelham. The wetland has very poorly drained soils and is surrounded by forest, open field, residential development and class IV roads. The field along the southwestern flank of Wetland Q has wildlife habitat ranked as Tier 3. A 2<sup>nd</sup> order stream flows from Wetland P through Wetland Q and into the Wetland R complex which contains Beaver Brook.

### FORESTED PORTION

**Canopy:** Red maple and American elm

**Shrub:** Winterberry, high bush blueberry, wild raisin, speckled alder, and *glossy buckthorn*

**Herbaceous:** Sensitive fern sensitive, sedges, skunk cabbage, jewel

### SHALLOW MARSH PORTION

**Herbaceous:** Cattails, *purple loosestrife*, woolgrass, goldenrod, reed canary grass, and small stand of *phragmites*.

**Wildlife:** Red-winged blackbird, red-tailed hawk

**Habitat exists to support:** songbirds, waterfowl, chipmunks, mink, mice, muskrat, turtles, garter snakes, green, leopard and pickerel frogs.



View west at cattail and woolgrass marsh habitat in Wetland Q.



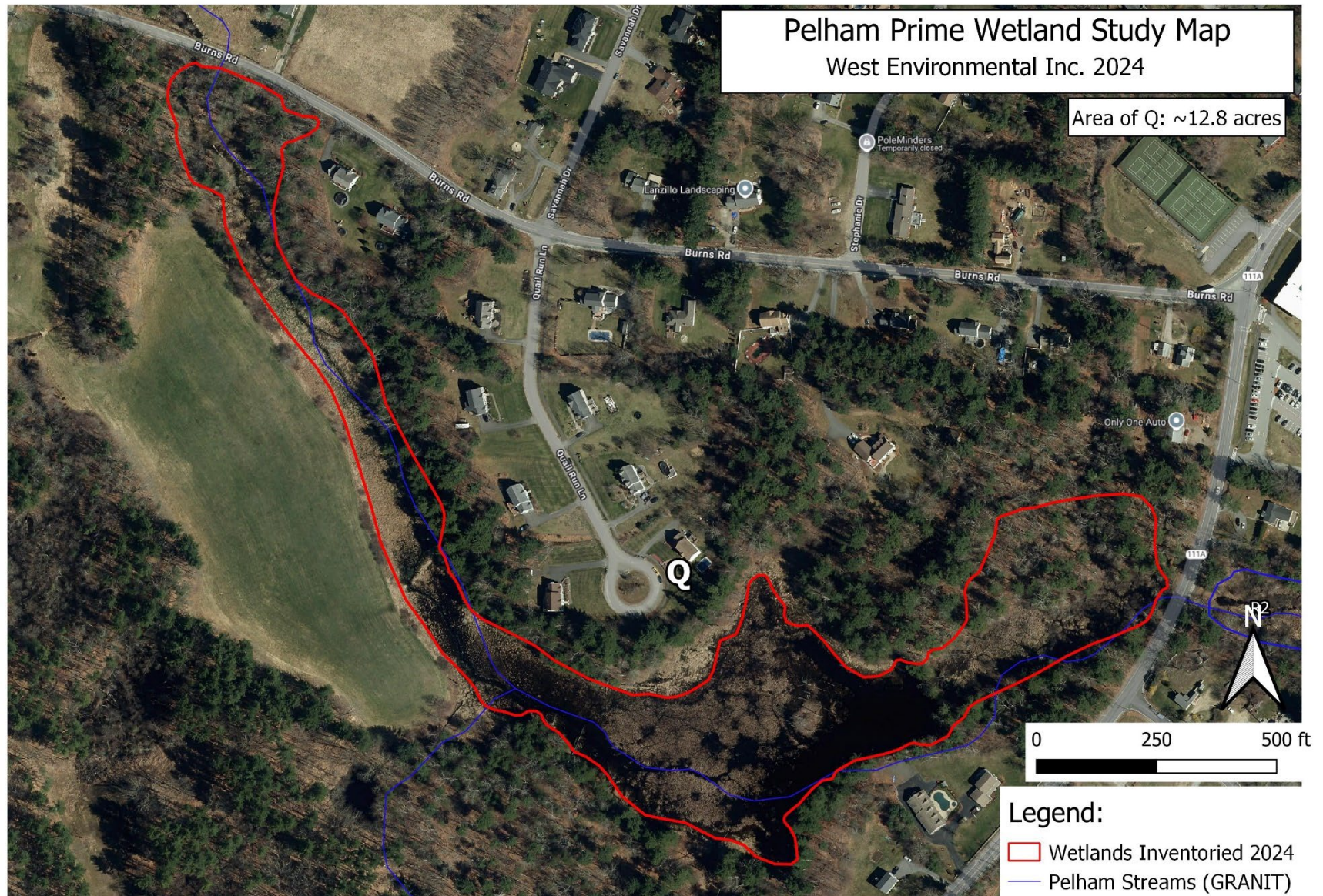


View south at Wetland Q from Burns Road where 1<sup>st</sup> order stream enters wetland.

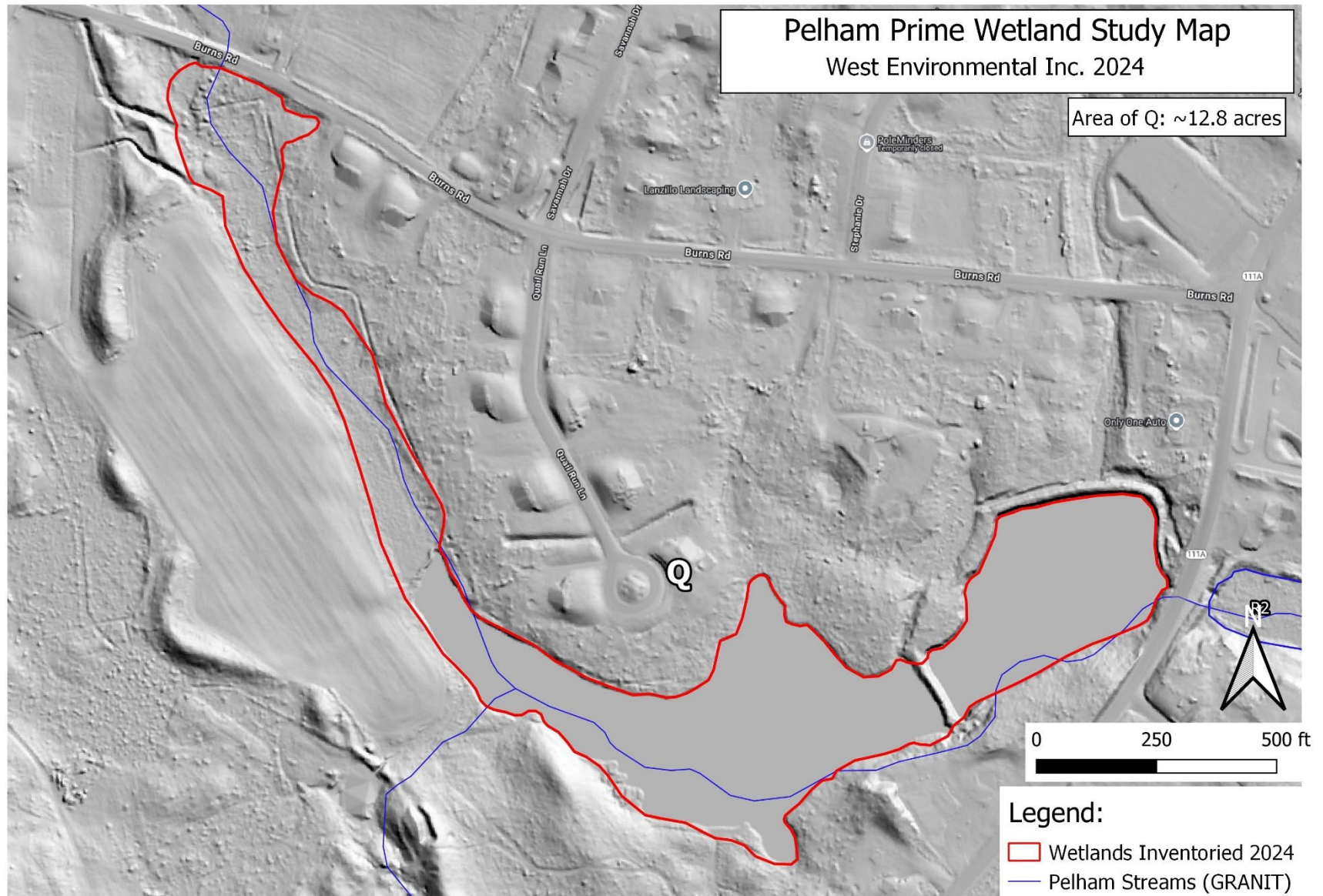


View of herbaceous and open habitat of Wetland Q from Marsh Road where Wetland Q flows into Wetland R2.









## Wetland R1

(PFO1/4E/SS/EM1E/UBF)

Wetland R1 is approximately 69 acres in size and lies within the 13,690 acre Lower Beaver Brook Watershed (HUC-12) in the center of the town. Wetland R1 is separated from Wetland R2 by an eagle scout bridge that is narrower than 50ft and therefore evaluated separately. The eastern side of Wetland R1 abuts commercial development and Bridge St/Route 38, a class II road. The Gibson Cemetery is to the north of the wetland, and the Pelham Elementary school is to the west. Wetland R2, residential development, and a class V road are to the south. The wetland is on Pelham School District property and has been designated as part of the Pelham Schools Natural Area. The majority of the wetland has wildlife habitat ranked as Tier 2. Beaver Brook, a 4<sup>th</sup> order stream and the largest watercourse in the town of Pelham, flows through the length of the wetland, approximately 3,100 linear feet of stream.

### SHALLOW MARSH PORTION

**Shrub:** Silky dogwood, buttonbush

**Herbaceous:** Sensitive fern cinnamon fern, cattail, reed canary grass, jewel weed, soft rush, fringed sedge, *purple loosestrife*, and *phragmites* under the power line.

### DEEP MARSH PORTION

**Herbaceous:** Eastern burr reed, pickerel weed, arrow arum, hop sedge, smartweed, water hemlock.

### FORESTED PORTION

**Canopy:** Red maple, river birch, silver maple, swamp white oak, American elm

**Shrub:** Speckled alder, high blueberry, winterberry, *glossy buckthorn*, buttonbush.

**Wildlife:** Painted turtles near bridge

**Habitat exists to support:** Songbirds, waterfowl, wading birds, fish, beaver, mink, mice, muskrat, turtles, snakes, frogs, newts and whitetail deer.





View of thick marsh-shrub habitat under mixed-forest canopy in northeast portion of Wetland R1 near the Gibbons cemetery and Pelham Elementary school.



View of skunk cabbage and buttonbush on very poorly drained soils common throughout the northern portion of Wetland R1.





View of stream channel (~2-foot wide muddy bottom) weaving through the northwestern section of Wetland R1.



View south of Beaver Brook mud bottom stream channel at its southern end in Wetland R1.





View of eagle scout bridge pinch point that separates Wetland R1 and R2.











## Wetland R2

(PFO1/4E/SS1/EM1b/ABHb/UBHb)

Wetland R2 is approximately 22 acres as mapped and lies within the 13,690 acre Lower Beaver Brook Watershed (HUC-12) in the center of Pelham. The majority of the wetland is on Pelham School District property and has been designated as part of the Pelham Schools Natural Area. Wetland R2 contains wildlife habitat ranked primarily as Tier 1 and some Tier 2. Wetland R2 is surrounded by a forested buffer with the school development to the north and some residential development and class IV and V roads to the east and south, respectively. A 2<sup>nd</sup> order stream meanders through Wetland R2 and into Wetland R1 where it joins Beaver Brook, a 4<sup>th</sup> order stream and the largest watercourse in Pelham.

**Canopy:** Red maple on the edges

**Shrub:** Speckled alder and silky dogwood.

**Herbaceous:** *Phragmites*, tussock sedge, cattail, three-way sedge, pickerel weed, white pond lily, *purple loosestrife*.

**Wildlife:** Waterfowl habitat

**Habitat exists to support:** Songbirds, beaver, mink, mice, muskrat, turtles, snakes and frogs.



View south of *phragmites* stand and tussock sedge growing along the northern edge of open water in Wetland R2's northern section.



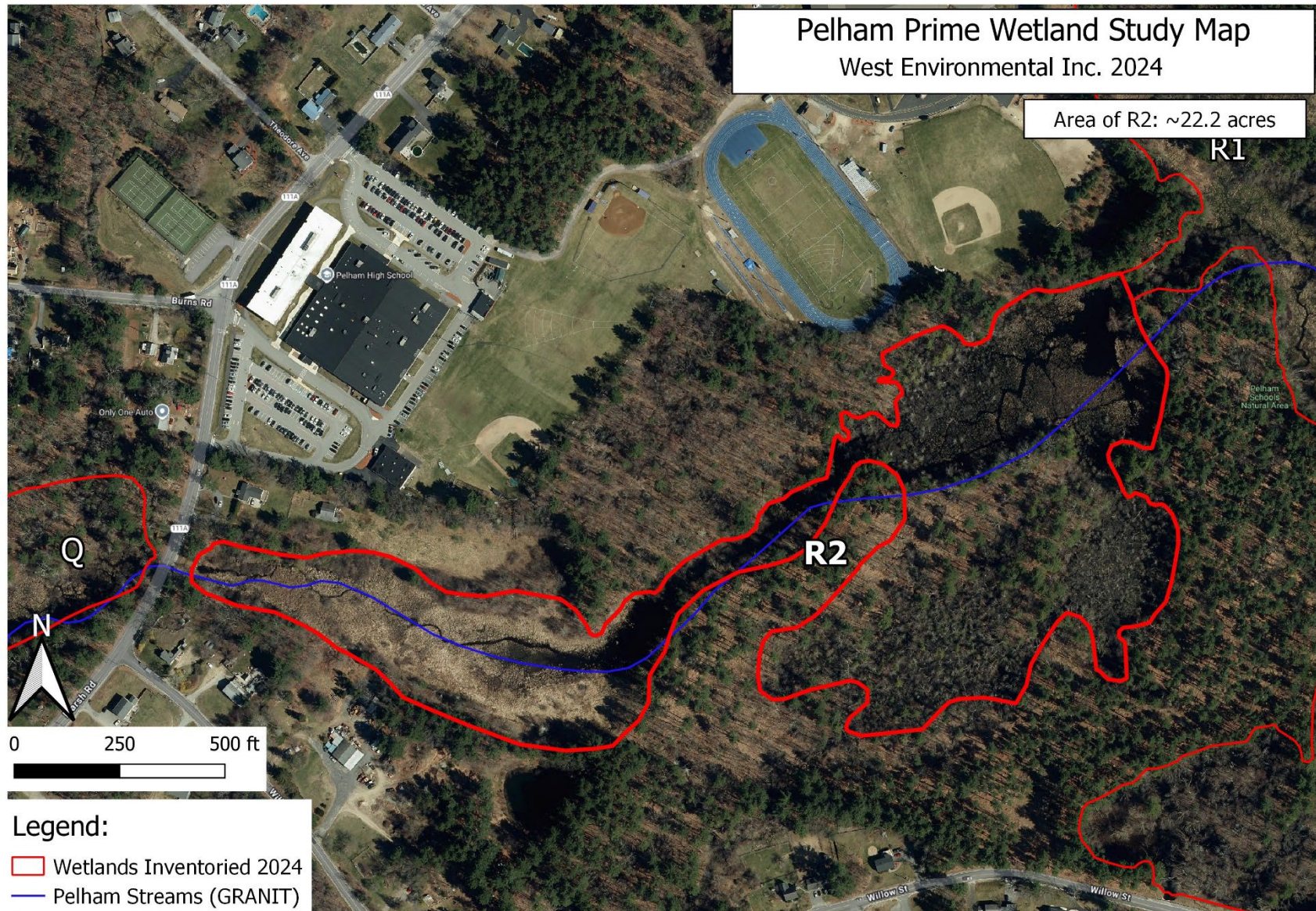


View south of pickerel weed, tussock sedge and open water habitat of Wetland R2 behind the school's baseball fields.

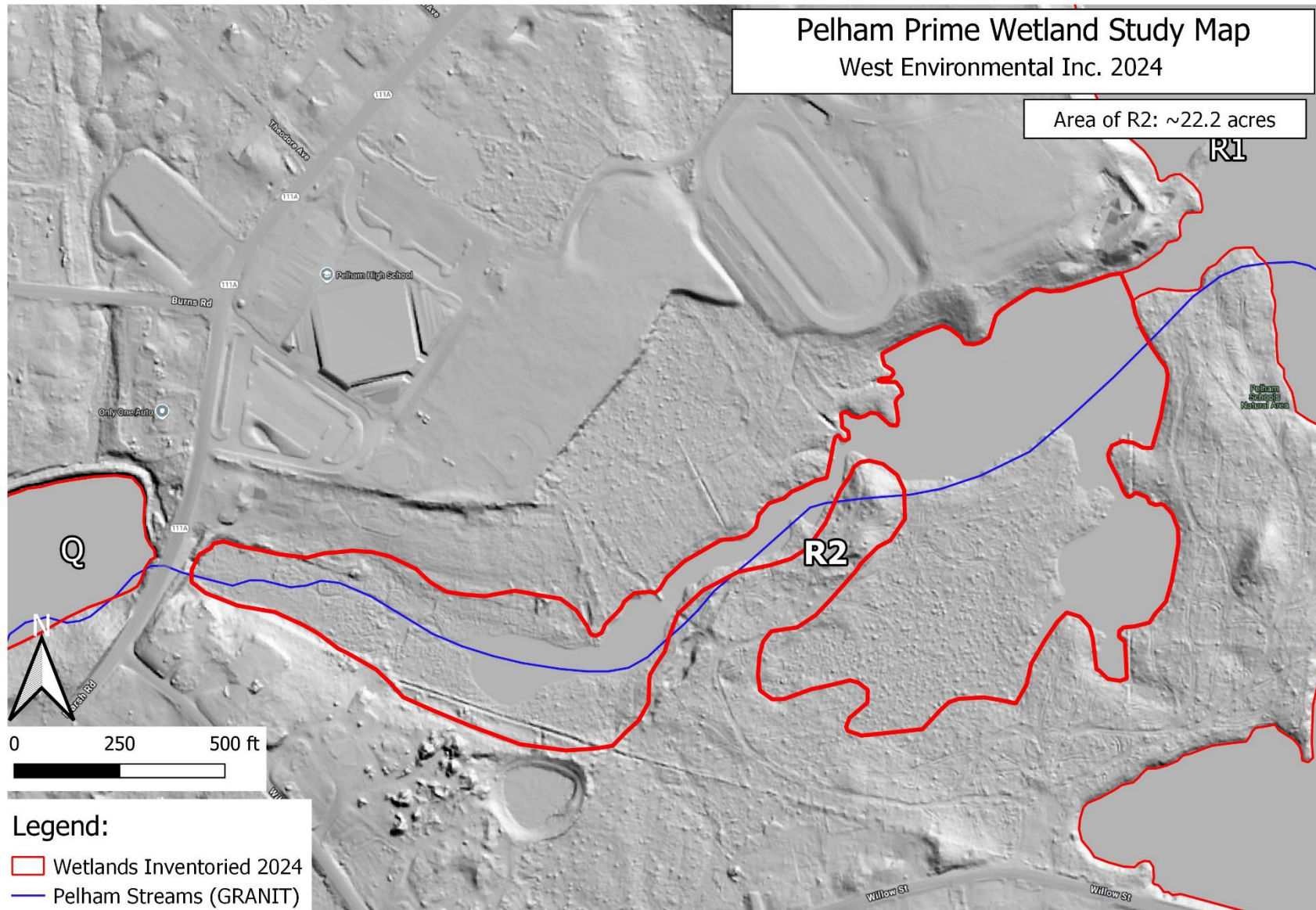


View southwest at emergent marsh section of Wetland R2 with the 2<sup>nd</sup> order stream channel flowing through it.











## Wetland V

(PFO1/SS1/EM1E)

Wetland V is approximately 20 acres in size located in the 13,690 acre Lower Beaver Brook Watershed (HUC-12) in the southeastern quadrant of Pelham. The wetland has very poorly drained soils and is flanked by residential development and class V roads. The land along the northern edge of the mapped wetland has been designated as Tier 1 wildlife habitat in the NH Wildlife Action Plan (2020) and the area directly to the south has been designated Tier 2 habitat.

**Canopy:** Red maple, white oak, white pine, elm, willow, cherry, box elder, eastern red cedar (along western edge)

**Shrub:** *Glossy buckthorn*, elm, *autumn olive*, winterberry, grey dogwood, arrowwood viburnum

**Herbaceous:** *Oriental bittersweet*, grape vine, virginia creeper, poison ivy, meadow sweet, jewelweed, golden rod, joe-pye-weed, jack-in-the-pulpit, American burnweed, *purple loosestrife*, blackberry

**Wildlife Observed:** Catbird

**Habitat exists to support:** Songbirds, salamanders, racoon, and skunk.



Northwestern portion of Wetland V with standing water under an open, mixed deciduous canopy.





View of the northern end of Wetland V with red maple, oak, pine and boxelder canopy along the edge of the wet meadow section of the wetland.

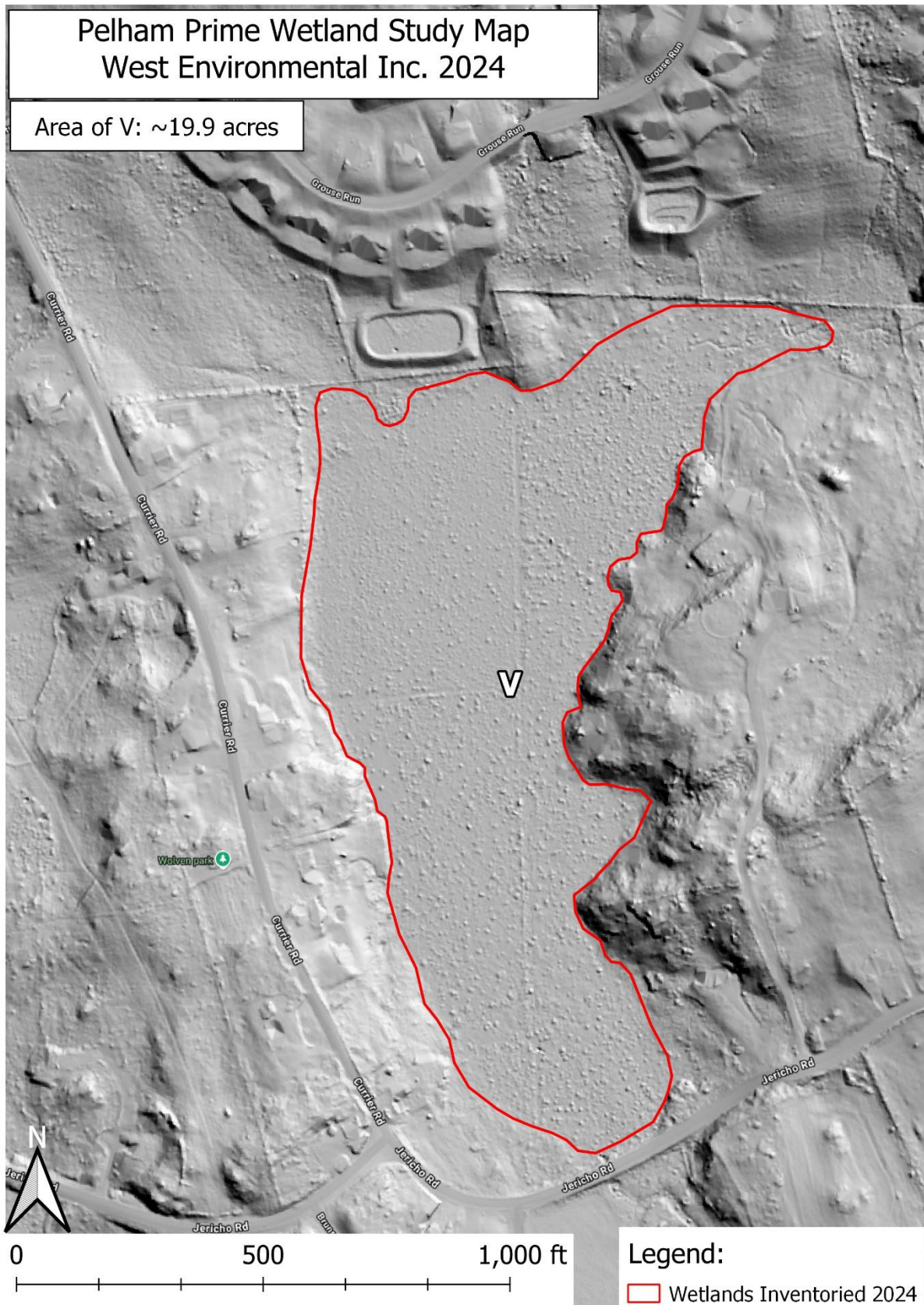


View north of the herbaceous, wet meadow habitat along the southern end of Wetland V from Jericho Road.











## APPENDIX

### New Hampshire Method Completed Data Forms



Wetland name/code  
Wetland area (acres)  
Watershed area (acres)

F  
24.9  
11978

Date Evaluated: 8-29-2024  
Evaluated by: Larissa Robinov & Mark West

*Do not enter data into cells highlighted in blue. These cells contain formulas that automatically carry data over from function to function, or total and average functional scores.*

1. ECOLOGICAL INTEGRITY	Score	10	5	1	0	Notes
1. Land uses in watershed that degrade water quality?	5.0	<5% of watershed with such land uses	5-10% of watershed with such land uses	>10% of watershed with such land uses		
2. Fill in Wetland?	10.0	Less than 1%	1-3%	>3%		
3. Agriculture in wetland?	10.0	Less than 5%	5-25%	> 25%		
4. Logging activity in wetland?	10.0	Less than 1%	1-10%	> 10%		
5. Human activity in wetland?	5.0	Low	Moderate	High		
6. Invasive plants in wetland?	5.0	<1%	1-5%	> 5%		
7. Road/driveway/railroad crossings?	5.0	None	within 500ft of wetland	adjacent to or crossing wetland		
8. Human activity within 500 ft?	10.0	Little or None	evident in up to 25% of 500 ft zone	evident in more than 25% of 500 ft zone		
9. % impervious surface within 500 ft.?	5.0	< 3%	3-10%	>10%		
10. Structure regulating water flow?	10.0	None	Slight modification	Severe modification		
Average Score - Ecological Integrity 7.5						

2. WETLAND WILDLIFE HABITAT	Score	10	5	1	0	Notes
1. Wetland acres?	5.0	> 100 acres	20-100 acres	<20 acres		
2. Ecological Integrity Avg. score?	7.5					
3. Water quality (Use F1, Q1 score)?	5.0					
4. Open water < 6.6ft deep?	5.0	> 3 acres	0.5 - 3 acres	< 0.5 acre		
5. Deepwater Habitats?	1.0	stream ≥ 1 mile and/or lake/pond >10 acres	stream < 1 mile and/or lake/pond <10 acres	No deepwater		
6. Wetland vegetation class diversity?	10.0	3 or more classes	2 classes	1 class		
7. Proximity to other wetlands?	10.0	connected/unconnected within 0.25 mile	connected 0.5-1mi. or unconnected 0.25-0.5 mi.	Not connected within 1 mile or > 0.5 mi. from unconnected		
8. Wildlife travel corridors?	10.0	Free access	Access partially blocked	Access blocked		
9. % of wetland edge undisturbed?	5.0	>95%	75-95%	< 75%		
10. Invasive plants (Use F1, Q6 score)	5.0					
Average Score - Wildlife Habitat 6.4						

3. FISH & AQUATIC HABITAT	Score	10	5	1	0	Notes
1. Dominant land use in watershed?	10.0	Woodland, wetland, inactive farmland	Active farm/rural res	Heavily developed residential, commercial, industrial		
2. Water Quality? (use F1, Q1 score)	5.0					
3. Open water?(use F2, Q4 score)	5.0					
4. Deepwater habitats > 6.6 ft. deep?	0.0	> 100 acres	10-100 acres	< 10 acres	Not present	
5. Stream width in wetland?	5.0	> 50 ft.	25-50 ft.	< 25 ft.	Not present	



6. Alteration of stream channel?	10.0	Natural channel / low gradient or steep gradient w/ riffles	Recently modified or formerly channelized	Recently channelized or stream in non-vegetated chute/pipe	Not present	
7. Diversity of substrate types?	5.0	4 or more substrates	2-3 substrates	1 substrate		
8. Coarse woody material and large rocks?	10.0	> 10% of cover in water	< 10% of cover in water	No visible cover		
9. Floating & submerged vegetation?	1.0	> 70% cover in water	30-70% cover in water	< 30% cover		
10. Artificial Barriers to aquatic life?	10.0	No barriers	Artificial barrier with provision for passage	Barrier with no provision for passage	No stream	
11. Fish or aquatic life that is rare, threatened, endangered or species of conservation concern?	1.0	Documented occurrence in or near wetland	Documented occurrence within 1/2 mi. & suitable habitat	No documented occurrence in 1/2 mi. but suitable habitat	No occurrence & no suitable habitat	

**Average Score - Fish & Aquatic Habitat** **5.6**

4. SCENIC QUALITY	Score	10	5	1	0	Notes
1. Wetland vegetation classes visible?	1.0	≥ 3 classes	2 classes	1 class		
2. Public access?	1.0	Public access & trails/road	Public access; no trails	No public access		
3. Visible extent across wetland?	5.0	Large expanse	Somewhat restricted view	Forested; limited view		
4. Open water visible?	1.0	> 3 acres	1-3 acres	< 1 acre		
5. Visual contrast with landscape?	5.0	High level of contrast	Some visual contrast	Little contrast or developed		
6. General appearance of wetland?	10.0	Undisturbed & natural	Minor visual detractors	Severe visual detractors		

**Average Score - Scenic Quality** **3.8**

5. EDUCATIONAL POTENTIAL	Score	10	5	1	0	Notes
1. Ecological Integrity Score?	7.5					
2. Wildlife Habitat Score?	6.4					
3. Fish & Aquatic Habitat Score?	5.6					
4. Public access?	5.0	Public access & trails/road	Public access; no trails	No public access		
5. Adequate parking for 10-15 cars or bus?	1.0	< 5 mins from site	5-15 min walk from site or parking limited	> 15 mins walk / limited parking		
6. Wetland vegetation classes accessible?	1.0	≥ 3 classes	2 classes	1 class		
7. Access to perennial stream / pond?	1.0	Direct water access	Access 5 mins or less	Limited/no access	No open water	
8. Scenic Quality Score?	3.8					
9. Disabled access		Yes			No	

**Average Score - Education** **3.5**

6. WETLAND RECREATION	Score	10	5	1	0	Notes
1. Wildlife Habitat Score?	6.4					
2. Open water access (canoes & kayaks)?	0.0	Open water & easy access	open water; limited access	Open water but no access	No open water	
3. Trails-based recreation?	1.0	Maintained trails present	Trails but not maintained	No trails		
4. Off-trail recreation opportunities?	5.0	Open water > .5 acre, <b>and</b> undisturbed buffer ≥ 75% of edge	Open water > .5 acre, <b>or</b> undisturbed buffer ≥ 75% of edge	Neither open water > .5 acre, or undisturbed buffer	No trails	



5. Off-road parking for two or more cars?	0.0	< 5 mins walk from site	5-10 min walk from site	> 10 mins walk/no parking	No access to site	
6. Scenic Quality Score?	3.8					

**Average Score - Wetland Recreation** 2.7

7. FLOOD WATER STORAGE	Score	10	5	1	0	Notes
Use separate Flood Storage Index worksheet Field work is not needed for this function						
<b>Average Score - Flood Storage</b>	2.7					

8. GROUNDWATER	Score	10	5	1	0	Notes
1. Stratified drift aquifer beneath wetland?	10.0	Wetland overlies aquifer	Aquifer within 1/4 mile	Aquifer > 1/4 mile of wetland		
2. Public water supply area?	10.0	Wetland in in Favorable Gravel Well area	Wetland within 1/4 mile of Favorable Gravel Well	Wetland > 1/4 mile of Favorable Gravel Well area		
3. Public wellhead protection area (WHPA)?	1.0	>75% of WHPA includes wetland	25%-75% of WHPA includes wetland	<25% of WHPA includes wetland		
4. Percent cover of highly permeable soils within 100 ft.?	1.0	> 50% of Table 3 soils	25-50% of Table 3 soils	< 25% of Table 3 soils		
5. Percent cover of highly permeable soils WITHIN the wetland	1.0	> 50% of Table 4 soils	25-50% of Table 4 soils	< 25% of Table 4 soils		

**Average Score - Groundwater** 4.4

9. SEDIMENT TRAPPING	Score	10	5	1	0	Notes
1. Flood Storage Score?	2.7					
2. Wetland outlet?	1.0	No outlet or outlet is constricted or outlet is ponded	Outlet not constricted but primary flow through wetland is sheet flow.	Primary flow through wetland is in the channel.		
3. Character of water flow through the wetland?	5.0	No stream channel OR inlet but no outlet OR outlet impounded OR inlet&outlet and sinuosity >1.5	Channel sinuosity is <1.5 and >1.0	Straight channel - sinuosity = 1.0 and no impoundments		
4. Wetland to watershed size ratio?	1.0	Wetland > 10% of watershed	Wetland 1-10% of watershed	Wetland <1% of watershed		
5. Gradient of wetland?	10.0	Gradient < 0.5% or no outlet	Gradient 0.5-3%	Gradient > 3%		
6. Areal extent (% coverage) of vegetation	5.0	Persistent emergent, forested scrub-shrub, bogs >90%	Persistent & nonpersistent emergents, trees, shrubs 50-90%	Persistent & nonpersistent emergents, trees, shrubs <50%		
7. Avg. water depth in growing season?	5.0	< 1 ft. deep or no open water	> 1 ft. deep and < 6.6 ft. deep	> 6.6 ft. deep		

**Average Score - Sediment Trapping** 4.2

10. NUTRIENTS	Score	10	5	1	0	Notes
---------------	-------	----	---	---	---	-------



1. Flood Storage Score?	2.7					
2. Sediment Trapping Score?	4.2					
3. % vegetation cover (use F9, Q6)	5.0					
4. Hydroperiod?	10.0	Semipermanent or seasonal flooding or saturated	Seasonally or temporarily flooded	Permanent flooding or intermittently exposed		
5. Dominant soils in wetland?	5.0	Fine-textured soils (Table in Appendix D)	Organic and/or peat soils (Table in Appendix D)	Sands and gravels (Table in Appendix D)		
<b>Average Score - Nutrients</b> 5.4						

11. SHORELINE ANCHORING		10	5	1	0	Notes
1. Gradation of wetland vegetation?	5.0	≥ 3 vegetation classes	2 wetland classes	1 wetland class		
2. Vegetation density in wetland?	10.0	> 90% cover	70-90% cover	< 70% cover		
3. Width of wetland along water body?	10.0	> 20 ft.	10-20 ft.	< 10 ft.		
4. Substrate "roughness" of wetland?	5.0	Many boulders, stones, cobbles	Few stones, mostly sand & gravel	Smooth, mostly silts & fine sands or organic material		

**Average Score - Shoreline Anchoring** 7.5

12. NOTEWORTHINESS		10			0	Notes
1. Wetland within 500ft of Highest Ranked Habitat (NH WAP)?	10.0	YES			NO	
2. Local significance, high scores, largest	10.0	YES	CONNECTIVITY BTWN PRAS		NO	
3. Local or regional or statewide significance?	0.0	YES			NO	
4. Known rare/unique biological or geological features	0.0	YES			NO	
5. Documented historic/archaeological site?	0.0	YES			NO	
6. Connected to designated river?	0.0	YES			NO	
7. Wetland in urban setting?	0.0	YES			NO	

**Average Score - Noteworthiness** 20.0



Wetland name/code *H*  
Wetland area (acres) 23.6 acres  
Watershed area (acres) 148 acres

Date Evaluated: 8/1/2024  
Evaluated by: Mark West

*Do not enter data into cells highlighted in blue. These cells contain formulas that automatically carry data over from function to function, or total and average functional scores.*

1. ECOLOGICAL INTEGRITY	Score	10	5	1	0	Notes
1. Land uses in watershed that degrade water quality?	10.0	<5% of watershed with such land uses	5-10% of watershed with such land uses	>10% of watershed with such land uses		
2. Fill in Wetland?	10.0	Less than 1%	1-3%	>3%		
3. Agriculture in wetland?	10.0	Less than 5%	5-25%	> 25%		
4. Logging activity in wetland?	5.0	Less than 1%	1-10%	> 10%		
5. Human activity in wetland?	10.0	Low	Moderate	High		
6. Invasive plants in wetland?	5.0	<1%	1-5%	> 5%		
7. Road/driveway/railroad crossings?	5.0	None	within 500ft of wetland	adjacent to or crossing wetland		
8. Human activity within 500 ft?	5.0	Little or None	evident in up to 25% of 500 ft zone	evident in more than 25% of 500 ft zone		
9. % impervious surface within 500 ft.?	5.0	< 3%	3-10%	>10%		
10. Structure regulating water flow?	5.0	None	Slight modification	Severe modification		
Average Score - Ecological Integrity		7.0				

2. WETLAND WILDLIFE HABITAT	Score	10	5	1	0	Notes
1. Wetland acres?		> 100 acres	20-100 acres	<20 acres		
2. Ecological Integrity Avg. score?	7.0					
3. Water quality (Use F1, Q1 score)?	10.0					
4. Open water < 6.6ft deep?	1.0	> 3 acres	0.5 - 3 acres	< 0.5 acre		
5. Deepwater Habitats?	1.0	stream ≥ 1 mile and/or lake/pond >10 acres	stream < 1 mile and/or lake/pond <10 acres	No deepwater		
6. Wetland vegetation class diversity?	5.0	3 or more classes	2 classes	1 class		
7. Proximity to other wetlands?	10.0	connected/unconnected within 0.25 mile	connected 0.5-1mi. or unconnected 0.25-0.5 mi.	Not connected within 1 mile or > 0.5 mi. from unconnected		
8. Wildlife travel corridors?	5.0	Free access	Access partially blocked	Access blocked		
9. % of wetland edge undisturbed?	5.0	>95%	75-95%	< 75%		
10. Invasive plants (Use F1, Q6 score)	5.0					
Average Score - Wildlife Habitat		4.9				

3. FISH & AQUATIC HABITAT	Score	10	5	1	0	Notes
1. Dominant land use in watershed?	5.0	Woodland, wetland, inactive farmland	Active farm/rural res	Heavily developed residential, commercial, industrial		
2. Water Quality? (use F1, Q1 score)	10.0					
3. Open water?(use F2, Q4 score)	1.0					
4. Deepwater habitats > 6.6 ft. deep?	0.0	> 100 acres	10-100 acres	< 10 acres	Not present	
5. Stream width in wetland?	0.0	> 50 ft.	25-50 ft.	< 25 ft.	Not present	
6. Alteration of stream channel?	0.0	Natural channel / low gradient or steep gradient w/ riffles	Recently modified or formerly channelized	Recently channelized or stream in non-vegetated chute/pipe	Not present	
7. Diversity of substrate types?	1.0	4 or more substrates	2-3 substrates	1 substrate		
8. Coarse woody material and large rocks?	1.0	> 10% of cover in water	< 10% of cover in water	No visible cover		



9. Floating & submerged vegetation?	1.0	> 70% cover in water	30-70% cover in water	< 30% cover		
10. Artificial Barriers to aquatic life?	0.0	No barriers	Artificial barrier with provision for passage	Barrier with no provision for passage	No stream	
11. Fish or aquatic life that is rare, threatened, endangered or species of conservation concern?	0.0	Documented occurrence in or near wetland	Documented occurrence within 1/2 mi. & suitable habitat	No documented occurrence in 1/2 mi. but suitable habitat	No occurrence & no suitable habitat	
<b>Average Score - Fish &amp; Aquatic Habitat</b> <b>1.7</b>						

4. SCENIC QUALITY	Score	10	5	1	0	Notes
1. Wetland vegetation classes visible?	1.0	≥ 3 classes	2 classes	1 class		
2. Public access?	1.0	Public access & trails/road	Public access; no trails	No public access		
3. Visible extent across wetland?	1	Large expanse	Somewhat restricted view	Forested; limited view		
4. Open water visible?	1.0	> 3 acres	1-3 acres	< 1 acre		
5. Visual contrast with landscape?	5.0	High level of contrast	Some visual contrast	Little contrast or developed		
6. General appearance of wetland?	5.0	Undisturbed & natural	Minor visual detractors	Severe visual detractors		
<b>Average Score - Scenic Quality</b> <b>2.3</b>						

5. EDUCATIONAL POTENTIAL	Score	10	5	1	0	Notes
1. Ecological Integrity Score?	7.0					
2. Wildlife Habitat Score?	4.9					
3. Fish & Aquatic Habitat Score?	1.7					
4. Public access?	1.0	Public access & trails/road	Public access; no trails	No public access		
5. Adequate parking for 10-15 cars or bus?	1.0	< 5 mins from site	5-15 min walk from site or parking limited	> 15 mins walk / limited parking		
6. Wetland vegetation classes accessible?	1.0	≥ 3 classes	2 classes	1 class		
7. Access to perennial stream / pond?	0.0	Direct water access	Access 5 mins or less	Limited/no access	No open water	
8. Scenic Quality Score?	2.3					
9. Disabled access	0.0	Yes			No	
<b>Average Score - Education</b> <b>2.1</b>						

6. WETLAND RECREATION	Score	10	5	1	0	Notes
1. Wildlife Habitat Score?	4.9					
2. Open water access (canoes & kayaks)?	0.0	Open water & easy access	open water; limited access	Open water but no access	No open water	
3. Trails-based recreation?	0.0	Maintained trails present	Trails but not maintained	No trails		
4. Off-trail recreation opportunities?	0.0	Open water > .5 acre, <b>and</b> undisturbed buffer ≥ 75% of edge	Open water > .5 acre, <b>or</b> undisturbed buffer ≥ 75% of edge	Neither open water > .5 acre, or undisturbed buffer	No trails	
5. Off-road parking for two or more cars?	0.0	< 5 mins walk from site	5-10 min walk from site	> 10 mins walk/no parking	No access to site	
6. Scenic Quality Score?	2.3					

**Average Score - Wetland Recreation** **1.2**

7. FLOOD WATER STORAGE	Score	10	5	1	0	Notes
Use separate Flood Storage Index worksheet Field work is not needed for this function						

<b>Average Score - Flood Storage</b>	<b>2.8</b>					
--------------------------------------	------------	--	--	--	--	--

8. GROUNDWATER	Score	10	5	1	0	Notes
1. Stratified drift aquifer beneath wetland?	10.0	Wetland overlies aquifer	Aquifer within 1/4 mile	Aquifer >1/4 mile of wetland		
2. Public water supply area?	5.0	Wetland in in Favorable Gravel Well area	Wetland within 1/4 mile of Favorable Gravel Well area	Wetland > 1/4 mile of Favorable Gravel Well area		
3. Public wellhead protection area (WHPA)?	1.0	>75% of WHPA includes wetland	25%-75% of WHPA includes wetland	<25% of WHPA includes wetland		
4. Percent cover of highly permeable soils within 100 ft.?	10.0	> 50% of Table 3 soils	25-50% of Table 3 soils	< 25% of Table 3 soils		
5. Percent cover of highly permeable soils WITHIN the wetland	1.0	> 50% of Table 4 soils	25-50% of Table 4 soils	< 25% of Table 4 soils		

<b>Average Score - Groundwater</b>	<b>5.2</b>					
------------------------------------	------------	--	--	--	--	--

9. SEDIMENT TRAPPING	Score	10	5	1	0	Notes
1. Flood Storage Score?	2.8					
2. Wetland outlet?	5.0	No outlet or outlet is constricted or outlet is ponded	Outlet not constricted but primary flow through wetland is sheet flow.	Primary flow through wetland is in the channel.		
3. Character of water flow through the wetland?	10.0	No stream channel OR inlet but no outlet OR outlet impounded OR inlet&outlet and sinuosity >1.5	Channel sinuosity is <1.5 and >1.0	Straight channel - sinuosity = 1.0 and no impoundments		
4. Wetland to watershed size ratio?	10.0	Wetland > 10% of watershed	Wetland 1-10% of watershed	Wetland <1% of watershed		
5. Gradient of wetland?	10.0	Gradient < 0.5% or no outlet	Gradient 0.5-3%	Gradient > 3%		
6. Areal extent (% coverage) of vegetation	10.0	Persistent emergent, forested scrub-shrub, bogs >90%	Persistent & nonpersistent emergents, trees, shrubs 50-90%	Persistent & nonpersistent emergents, trees, shrubs <50%		
7. Avg. water depth in growing season?	10.0	< 1 ft. deep or no open water	> 1 ft. deep and < 6.6 ft. deep	> 6.6 ft. deep		

<b>Average Score - Sediment Trapping</b>	<b>8.3</b>					
--	------------	--	--	--	--	--

10. NUTRIENTS	Score	10	5	1	0	Notes
1. Flood Storage Score?	2.8					
2. Sediment Trapping Score?	8.3					
3. % vegetation cover (use F9, Q6)	10.0					
4. Hydroperiod?		Semipermanent or seasonal flooding or saturated	Seasonally or temporarily flooded	Permanent flooding or intermittently exposed		
5. Dominant soils in wetland?	5.0	Fine-textured soils (Table in Appendix D)	Organic and/or peat soils (Table in Appendix D)	Sands and gravels (Table in Appendix D)		

<b>Average Score - Nutrients</b>	<b>5.2</b>					
----------------------------------	------------	--	--	--	--	--

11. SHORELINE ANCHORING		10	5	1	0	Notes
1. Gradation of wetland vegetation?	1.0	≥ 3 vegetation classes	2 wetland classes	1 wetland class		
2. Vegetation density in wetland?	10.0	> 90% cover	70-90% cover	< 70% cover		
3. Width of wetland along water body?	0.0	> 20 ft.	10-20 ft.	< 10 ft.		
4. Substrate "roughness" of wetland?	0.0	Many boulders, stones, cobbles	Few stones, mostly sand & gravel	Smooth, mostly silts & fine sands or organic material		

<b>Average Score - Shoreline Anchoring</b>	<b>2.8</b>					
--	------------	--	--	--	--	--



12. NOTEWORTHINESS		10			0	Notes
1. Wetland within 500ft of Highest Ranked Habitat (NH WAP)?	0.0	YES			NO	
2. Local significance, high scores, largest	0.0	YES			NO	
3. Local or regional or statewide significance?	0.0	YES			NO	
4. Known rare/unique biological or geological features	0.0	YES			NO	
5. Documented historic/archaeological site?	0.0	YES			NO	
6. Connected to designated river?	0.0	YES			NO	
7. Wetland in urban setting?	10.0	YES			NO	
<b>Average Score - Noteworthiness</b>		<b>10.0</b>				

Wetland name/code N  
Wetland area (acres) 6.3  
Watershed area (acres) 36650

Date Evaluated: 11-20-2024  
Evaluated by: Larissa Robinov & Mark West

*Do not enter data into cells highlighted in blue. These cells contain formulas that automatically carry data over from function to function, or total and average functional scores.*

1. ECOLOGICAL INTEGRITY	Score	10	5	1	0	Notes
1. Land uses in watershed that degrade water quality?	10.0	<5% of watershed with such land uses	5-10% of watershed with such land uses	>10% of watershed with such land uses		
2. Fill in Wetland?	10.0	Less than 1%	1-3%	>3%		
3. Agriculture in wetland?	10.0	Less than 5%	5-25%	> 25%		
4. Logging activity in wetland?	10.0	Less than 1%	1-10%	> 10%		
5. Human activity in wetland?	10.0	Low	Moderate	High		
6. Invasive plants in wetland?	5.0	<1%	1-5%	> 5%		
7. Road/driveway/railroad crossings?	10.0	None	within 500ft of wetland	adjacent to or crossing wetland		
8. Human activity within 500 ft?	10.0	Little or None	evident in up to 25% of 500 ft zone	evident in more than 25% of 500 ft zone		
9. % impervious surface within 500 ft.?	10.0	< 3%	3-10%	>10%		
10. Structure regulating water flow?	10.0	None	Slight modification	Severe modification		
Average Score - Ecological Integrity		9.5				

2. WETLAND WILDLIFE HABITAT	Score	10	5	1	0	Notes
1. Wetland acres?	1.0	> 100 acres	20-100 acres	<20 acres		
2. Ecological Integrity Avg. score?	9.5					
3. Water quality (Use F1, Q1 score)?	10.0					
4. Open water < 6.6ft deep?	5.0	> 3 acres	0.5 - 3 acres	< 0.5 acre		
5. Deepwater Habitats?	1.0	stream $\geq$ 1 mile and/or lake/pond >10 acres	stream < 1 mile and/or lake/pond <10 acres	No deepwater		
6. Wetland vegetation class diversity?	10.0	3 or more classes	2 classes	1 class		
7. Proximity to other wetlands?	10.0	connected/unconnected within 0.25 mile	connected 0.5-1mi. or unconnected 0.25-0.5 mi.	Not connected within 1 mile or > 0.5 mi. from unconnected		
8. Wildlife travel corridors?	10.0	Free access	Access partially blocked	Access blocked		
9. % of wetland edge undisturbed?	10.0	>95%	75-95%	< 75%		
10. Invasive plants (Use F1, Q6 score)	5.0					
Average Score - Wildlife Habitat		7.2				

3. FISH & AQUATIC HABITAT	Score	10	5	1	0	Notes
1. Dominant land use in watershed?	10.0	Woodland, wetland, inactive farmland	Active farm/rural res	Heavily developed residential, commercial, industrial		



2. Water Quality? (use F1, Q1 score)	10.0					
3. Open water?(use F2, Q4 score)	5.0					
4. Deepwater habitats > 6.6 ft. deep?	0.0	> 100 acres	10-100 acres	< 10 acres	Not present	
5. Stream width in wetland?	0.0	> 50 ft.	25-50 ft.	< 25 ft.	Not present	
6. Alteration of stream channel?	0.0	Natural channel / low gradient or steep gradient w/ riffles	Recently modified or formerly channelized	Recently channelized or stream in non-vegetated chute/pipe	Not present	
7. Diversity of substrate types?	5.0	4 or more substrates	2-3 substrates	1 substrate		
8. Coarse woody material and large rocks?	10.0	> 10% of cover in water	< 10% of cover in water	No visible cover		
9. Floating & submerged vegetation?	1.0	> 70% cover in water	30-70% cover in water	< 30% cover		
10. Artificial Barriers to aquatic life?	0.0	No barriers	Artificial barrier with provision for passage	Barrier with no provision for passage	No stream	
11. Fish or aquatic life that is rare, threatened, endangered or species of conservation concern?	1.0	Documented occurrence in or near wetland	Documented occurrence within 1/2 mi. & suitable habitat	No documented occurrence in 1/2 mi. but suitable habitat	No occurrence & no suitable habitat	
<b>Average Score - Fish &amp; Aquatic Habitat</b>		<b>3.8</b>				

4. SCENIC QUALITY	Score	10	5	1	0	Notes
1. Wetland vegetation classes visible?	5.0	≥ 3 classes	2 classes	1 class		
2. Public access?	1.0	Public access & trails/road	Public access; no trails	No public access		
3. Visible extent across wetland?	5.0	Large expanse	Somewhat restricted view	Forested; limited view		
4. Open water visible?	1.0	> 3 acres	1-3 acres	< 1 acre		
5. Visual contrast with landscape?	5.0	High level of contrast	Some visual contrast	Little contrast or developed		
6. General appearance of wetland?	10.0	Undisturbed & natural	Minor visual detractors	Severe visual detractors		
<b>Average Score - Scenic Quality</b>		<b>4.5</b>				

5. EDUCATIONAL POTENTIAL	Score	10	5	1	0	Notes
1. Ecological Integrity Score?	9.5					
2. Wildlife Habitat Score?	7.2					
3. Fish & Aquatic Habitat Score?	3.8					
4. Public access?	1.0	Public access & trails/road	Public access; no trails	No public access		
5. Adequate parking for 10-15 cars or bus?	10.0	< 5 mins from site	5-15 min walk from site or parking limited	> 15 mins walk / limited parking		
6. Wetland vegetation classes accessible?	10.0	≥ 3 classes	2 classes	1 class		
7. Access to perennial stream / pond?	5.0	Direct water access	Access 5 mins or less	Limited/no access	No open water	
8. Scenic Quality Score?	4.5					
9. Disabled access	0.0	Yes			No	
<b>Average Score - Education</b>		<b>5.7</b>				

6. WETLAND RECREATION	Score	10	5	1	0	Notes
-----------------------	-------	----	---	---	---	-------

1. Wildlife Habitat Score?	7.2					
2. Open water access (canoes & kayaks)?	0.0	Open water & easy access	open water; limited access	Open water but no access	No open water	
3. Trails-based recreation?	10.0	Maintained trails present	Trails but not maintained	No trails		
4. Off-trail recreation opportunities?	0.0	Open water > .5 acre, <b>and</b> undisturbed buffer ≥ 75% of edge	Open water > .5 acre, <b>or</b> undisturbed buffer ≥ 75% of edge	Neither open water > .5 acre, or undisturbed buffer	No trails	
5. Off-road parking for two or more cars?	10.0	< 5 mins walk from site	5-10 min walk from site	> 10 mins walk/no parking	No access to site	
6. Scenic Quality Score?	4.5					

**Average Score - Wetland Recreation** 5.3

7. FLOOD WATER STORAGE	Score	10	5	1	0	Notes
Use separate Flood Storage Index worksheet Field work is not needed for this function						
<b>Average Score - Flood Storage</b>	2.2					

8. GROUNDWATER	Score	10	5	1	0	Notes
1. Stratified drift aquifer beneath wetland?	1.0	Wetland overlies aquifer	Aquifer within 1/4 mile	Aquifer >1/4 mile of wetland		
2. Public water supply area?	1.0	Wetland in in Favorable Gravel Well area	Wetland within 1/4 mile of Favorable Gravel Well area	Wetland > 1/4 mile of Favorable Gravel Well area		
3. Public wellhead protection area (WHPA)?	1.0	>75% of WHPA includes wetland	25%-75% of WHPA includes wetland	<25% of WHPA includes wetland		
4. Percent cover of highly permeable soils within 100 ft.?	1.0	> 50% of Table 3 soils	25-50% of Table 3 soils	< 25% of Table 3 soils		
5. Percent cover of highly permeable soils WITHIN the wetland	1.0	> 50% of Table 4 soils	25-50% of Table 4 soils	< 25% of Table 4 soils		

**Average Score - Groundwater** 0.8

9. SEDIMENT TRAPPING	Score	10	5	1	0	Notes
1. Flood Storage Score?	2.2					
2. Wetland outlet?	5.0	No outlet or outlet is constricted or outlet is ponded	Outlet not constricted but primary flow through wetland is sheet flow.	Primary flow through wetland is in the channel.		
3. Character of water flow through the wetland?	10.0	No stream channel OR inlet but no outlet OR outlet impounded OR inlet&outlet and sinuosity >1.5	Channel sinuosity is <1.5 and >1.0	Straight channel - sinuosity = 1.0 and no impoundments		
4. Wetland to watershed size ratio?	1.0	Wetland > 10% of watershed	Wetland 1-10% of watershed	Wetland <1% of watershed		
5. Gradient of wetland?	10.0	Gradient < 0.5% or no outlet	Gradient 0.5-3%	Gradient > 3%		



6. Areal extent (% coverage) of vegetation	10.0	Persistent emergent, forested scrub-shrub, bogs >90%	Persistent & nonpersistent emergents, trees, shrubs 50-90%	Persistent & nonpersistent emergents, trees, shrubs <50%		
7. Avg. water depth in growing season?	5.0	< 1 ft. deep or no open water	> 1 ft. deep and < 6.6 ft. deep	> 6.6 ft. deep		

**Average Score - Sediment Trapping** **6.2**

10. NUTRIENTS	Score	10	5	1	0	Notes
1. Flood Storage Score?	2.2					
2. Sediment Trapping Score?	6.2					
3. % vegetation cover (use F9, Q6)	10.0					
4. Hydroperiod?	10.0	Semipermanent or seasonal flooding or saturated	Seasonally or temporarily flooded	Permanent flooding or intermittently exposed		
5. Dominant soils in wetland?	5.0	Fine-textured soils (Table in Appendix D)	Organic and/or peat soils (Table in Appendix D)	Sands and gravels (Table in Appendix D)		

**Average Score - Nutrients** **6.7**

11. SHORELINE ANCHORING		10	5	1	0	Notes
1. Gradation of wetland vegetation?	10.0	≥ 3 vegetation classes	2 wetland classes	1 wetland class		
2. Vegetation density in wetland?	10.0	> 90% cover	70-90% cover	< 70% cover		
3. Width of wetland along water body?	5.0	> 20 ft.	10-20 ft.	< 10 ft.		
4. Substrate "roughness" of wetland?	5.0	Many boulders, stones, cobbles	Few stones, mostly sand & gravel	Smooth, mostly silts & fine sands or organic material		

**Average Score - Shoreline Anchoring** **7.5**

12. NOTEWORTHINESS		10			0	Notes
1. Wetland within 500ft of Highest Ranked Habitat (NH WAP)?	10.0	YES			NO	
2. Local significance, high scores, largest	10.0	YES			NO	
3. Local or regional or statewide significance?	0.0	YES			NO	
4. Known rare/unique biological or geological features	0.0	YES			NO	
5. Documented historic/archaeological site?	0.0	YES			NO	
6. Connected to designated river?	0.0	YES			NO	
7. Wetland in urban setting?	0.0	YES			NO	

**Average Score - Noteworthiness** **20.0**

Wetland name/code P  
Wetland area (acres) 26.9  
Watershed area (acres) 13690

Date Evaluated: 8-9-2024  
Evaluated by: Larissa Robinov & Mark West

*Do not enter data into cells highlighted in blue. These cells contain formulas that automatically carry data over from function to function, or total and average functional scores.*

1. ECOLOGICAL INTEGRITY	Score	10	5	1	0	Notes
1. Land uses in watershed that degrade water quality?	1.0	<5% of watershed with such land uses	5-10% of watershed with such land uses	>10% of watershed with such land uses		
2. Fill in Wetland?	10.0	Less than 1%	1-3%	>3%		
3. Agriculture in wetland?	10.0	Less than 5%	5-25%	> 25%		
4. Logging activity in wetland?	10.0	Less than 1%	1-10%	> 10%		
5. Human activity in wetland?	10.0	Low	Moderate	High		
6. Invasive plants in wetland?	5.0	<1%	1-5%	> 5%		
7. Road/driveway/railroad crossings?	1.0	None	within 500ft of wetland	adjacent to or crossing wetland		
8. Human activity within 500 ft?	1.0	Little or None	evident in up to 25% of 500 ft zone	evident in more than 25% of 500 ft zone		
9. % impervious surface within 500 ft.?	5.0	< 3%	3-10%	>10%		
10. Structure regulating water flow?	10.0	None	Slight modification	Severe modification		
<b>Average Score - Ecological Integrity</b> 6.3						

2. WETLAND WILDLIFE HABITAT	Score	10	5	1	0	Notes
1. Wetland acres?	5.0	> 100 acres	20-100 acres	<20 acres		
2. Ecological Integrity Avg. score?	6.3					
3. Water quality (Use F1, Q1 score)?	1.0					
4. Open water < 6.6ft deep?	10.0	> 3 acres	0.5 - 3 acres	< 0.5 acre		
5. Deepwater Habitats?	1.0	stream $\geq$ 1 mile and/or lake/pond >10 acres	stream < 1 mile and/or lake/pond <10 acres	No deepwater		
6. Wetland vegetation class diversity?	10.0	3 or more classes	2 classes	1 class		
7. Proximity to other wetlands?	10.0	connected/unconnected within 0.25 mile	connected 0.5-1mi. or unconnected 0.25-0.5 mi.	Not connected within 1 mile or > 0.5 mi. from unconnected		
8. Wildlife travel corridors?	5.0	Free access	Access partially blocked	Access blocked		
9. % of wetland edge undisturbed?	10.0	>95%	75-95%	< 75%		
10. Invasive plants (Use F1, Q6 score)	5.0					
<b>Average Score - Wildlife Habitat</b> 6.3						

3. FISH & AQUATIC HABITAT	Score	10	5	1	0	Notes
1. Dominant land use in watershed?	1.0	Woodland, wetland, inactive farmland	Active farm/rural res	Heavily developed residential, commercial, industrial		



2. Water Quality? (use F1, Q1 score)	1.0					
3. Open water?(use F2, Q4 score)	10.0					
4. Deepwater habitats > 6.6 ft. deep?	0.0	> 100 acres	10-100 acres	< 10 acres	Not present	
5. Stream width in wetland?	0.0	> 50 ft.	25-50 ft.	< 25 ft.	Not present	
6. Alteration of stream channel?	0.0	Natural channel / low gradient or steep gradient w/ riffles	Recently modified or formerly channelized	Recently channelized or stream in non-vegetated chute/pipe	Not present	
7. Diversity of substrate types?	1.0	4 or more substrates	2-3 substrates	1 substrate		
8. Coarse woody material and large rocks?	5.0	> 10% of cover in water	< 10% of cover in water	No visible cover		
9. Floating & submerged vegetation?	5.0	> 70% cover in water	30-70% cover in water	< 30% cover		
10. Artificial Barriers to aquatic life?	10.0	No barriers	Artificial barrier with provision for passage	Barrier with no provision for passage	No stream	
11. Fish or aquatic life that is rare, threatened, endangered or species of conservation concern?	1.0	Documented occurrence in or near wetland	Documented occurrence within 1/2 mi. & suitable habitat	No documented occurrence in 1/2 mi. but suitable habitat	No occurrence & no suitable habitat	
<b>Average Score - Fish &amp; Aquatic Habitat</b> <b>3.1</b>						

4. SCENIC QUALITY	Score	10	5	1	0	Notes
1. Wetland vegetation classes visible?	5.0	≥ 3 classes	2 classes	1 class		
2. Public access?	1.0	Public access & trails/road	Public access; no trails	No public access		
3. Visible extent across wetland?	10.0	Large expanse	Somewhat restricted view	Forested; limited view		
4. Open water visible?	10.0	> 3 acres	1-3 acres	< 1 acre		
5. Visual contrast with landscape?	10.0	High level of contrast	Some visual contrast	Little contrast or developed		
6. General appearance of wetland?	5.0	Undisturbed & natural	Minor visual detractors	Severe visual detractors		
<b>Average Score - Scenic Quality</b> <b>6.8</b>						

5. EDUCATIONAL POTENTIAL	Score	10	5	1	0	Notes
1. Ecological Integrity Score?	6.3					
2. Wildlife Habitat Score?	6.3					
3. Fish & Aquatic Habitat Score?	3.1					
4. Public access?	1.0	Public access & trails/road	Public access; no trails	No public access		
5. Adequate parking for 10-15 cars or bus?	1.0	< 5 mins from site	5-15 min walk from site or parking limited	> 15 mins walk / limited parking		
6. Wetland vegetation classes accessible?	5.0	≥ 3 classes	2 classes	1 class		
7. Access to perennial stream / pond?	5.0	Direct water access	Access 5 mins or less	Limited/no access	No open water	
8. Scenic Quality Score?	6.8					
9. Disabled access	0.0	Yes			No	
<b>Average Score - Education</b> <b>3.8</b>						

6. WETLAND RECREATION	Score	10	5	1	0	Notes
-----------------------	-------	----	---	---	---	-------

1. Wildlife Habitat Score?	6.3					
2. Open water access (canoes & kayaks)?	1.0	Open water & easy access	open water; limited access	Open water but no access	No open water	
3. Trails-based recreation?	1.0	Maintained trails present	Trails but not maintained	No trails		
4. Off-trail recreation opportunities?	5.0	Open water > .5 acre, <b>and</b> undisturbed buffer ≥ 75% of edge	Open water > .5 acre, <b>or</b> undisturbed buffer ≥ 75% of edge	Neither open water > .5 acre, or undisturbed buffer	No trails	
5. Off-road parking for two or more cars?	0.0	< 5 mins walk from site	5-10 min walk from site	> 10 mins walk/no parking	No access to site	
6. Scenic Quality Score?	6.8					

**Average Score - Wetland Recreation** 3.4

7. FLOOD WATER STORAGE	Score	10	5	1	0	Notes
Use separate Flood Storage Index worksheet Field work is not needed for this function						
<b>Average Score - Flood Storage</b>	2.7					

8. GROUNDWATER	Score	10	5	1	0	Notes
1. Stratified drift aquifer beneath wetland?	10.0	Wetland overlies aquifer	Aquifer within 1/4 mile	Aquifer >1/4 mile of wetland		
2. Public water supply area?	5.0	Wetland in in Favorable Gravel Well area	Wetland within 1/4 mile of Favorable Gravel Well area	Wetland > 1/4 mile of Favorable Gravel Well area		
3. Public wellhead protection area (WHPA)?	1.0	>75% of WHPA includes wetland	25%-75% of WHPA includes wetland	<25% of WHPA includes wetland		
4. Percent cover of highly permeable soils within 100 ft.?	10.0	> 50% of Table 3 soils	25-50% of Table 3 soils	< 25% of Table 3 soils		
5. Percent cover of highly permeable soils WITHIN the wetland	1.0	> 50% of Table 4 soils	25-50% of Table 4 soils	< 25% of Table 4 soils		

**Average Score - Groundwater** 5.2

9. SEDIMENT TRAPPING	Score	10	5	1	0	Notes
1. Flood Storage Score?	2.7					
2. Wetland outlet?	10.0	No outlet or outlet is constricted or outlet is ponded	Outlet not constricted but primary flow through wetland is sheet flow.	Primary flow through wetland is in the channel.		
3. Character of water flow through the wetland?	10.0	No stream channel OR inlet but no outlet OR outlet impounded OR inlet&outlet and sinuosity >1.5	Channel sinuosity is <1.5 and >1.0	Straight channel - sinuosity = 1.0 and no impoundments		
4. Wetland to watershed size ratio?	1.0	Wetland > 10% of watershed	Wetland 1-10% of watershed	Wetland <1% of watershed		
5. Gradient of wetland?	10.0	Gradient < 0.5% or no outlet	Gradient 0.5-3%	Gradient > 3%		



6. Areal extent (% coverage) of vegetation	5.0	Persistent emergent, forested scrub-shrub, bogs >90%	Persistent & nonpersistent emergents, trees, shrubs 50-90%	Persistent & nonpersistent emergents, trees, shrubs <50%		
7. Avg. water depth in growing season?	5.0	< 1 ft. deep or no open water	> 1 ft. deep and < 6.6 ft. deep	> 6.6 ft. deep		

**Average Score - Sediment Trapping** **6.2**

10. NUTRIENTS	Score	10	5	1	0	Notes
1. Flood Storage Score?	2.7					
2. Sediment Trapping Score?	6.2					
3. % vegetation cover (use F9, Q6)	5.0					
4. Hydroperiod?	1.0	Semipermanent or seasonal flooding or saturated	Seasonally or temporarily flooded	Permanent flooding or intermittently exposed		
5. Dominant soils in wetland?	5.0	Fine-textured soils (Table in Appendix D)	Organic and/or peat soils (Table in Appendix D)	Sands and gravels (Table in Appendix D)		

**Average Score - Nutrients** **4.0**

11. SHORELINE ANCHORING		10	5	1	0	Notes
1. Gradation of wetland vegetation?	5.0	≥ 3 vegetation classes	2 wetland classes	1 wetland class		
2. Vegetation density in wetland?	10.0	> 90% cover	70-90% cover	< 70% cover		
3. Width of wetland along water body?	5.0	> 20 ft.	10-20 ft.	< 10 ft.		
4. Substrate "roughness" of wetland?	5.0	Many boulders, stones, cobbles	Few stones, mostly sand & gravel	Smooth, mostly silts & fine sands or organic material		

**Average Score - Shoreline Anchoring** **6.3**

12. NOTEWORTHINESS		10			0	Notes
1. Wetland within 500ft of Highest Ranked Habitat (NH WAP)?	10.0	YES			NO	
2. Local significance, high scores, largest	0.0	YES			NO	
3. Local or regional or statewide significance?	0.0	YES			NO	
4. Known rare/unique biological or geological features	0.0	YES			NO	
5. Documented historic/archaeological site?	0.0	YES			NO	
6. Connected to designated river?	0.0	YES			NO	
7. Wetland in urban setting?	0.0	YES			NO	

**Average Score - Noteworthiness** **10.0**

Wetland name/code  
Wetland area (acres)  
Watershed area (acres)

Q  
12.8  
13690

Date Evaluated: 8-9-2024  
Evaluated by: Larissa Robinov & Mark West

*Do not enter data into cells highlighted in blue. These cells contain formulas that automatically carry data over from function to function, or total and average functional scores.*

1. ECOLOGICAL INTEGRITY	Score	10	5	1	0	Notes
1. Land uses in watershed that degrade water quality?	1.0	<5% of watershed with such land uses	5-10% of watershed with such land uses	>10% of watershed with such land uses		
2. Fill in Wetland?	10.0	Less than 1%	1-3%	>3%		
3. Agriculture in wetland?	10.0	Less than 5%	5-25%	> 25%		
4. Logging activity in wetland?	10.0	Less than 1%	1-10%	> 10%		
5. Human activity in wetland?	10.0	Low	Moderate	High		
6. Invasive plants in wetland?	1.0	<1%	1-5%	> 5%		
7. Road/driveway/railroad crossings?	1.0	None	within 500ft of wetland	adjacent to or crossing wetland		
8. Human activity within 500 ft?	1.0	Little or None	evident in up to 25% of 500 ft zone	evident in more than 25% of 500 ft zone		
9. % impervious surface within 500 ft.?	5.0	< 3%	3-10%	>10%		
10. Structure regulating water flow?	10.0	None	Slight modification	Severe modification		
Average Score - Ecological Integrity		5.9				

2. WETLAND WILDLIFE HABITAT	Score	10	5	1	0	Notes
1. Wetland acres?	5.0	> 100 acres	20-100 acres	<20 acres		
2. Ecological Integrity Avg. score?	5.9					
3. Water quality (Use F1, Q1 score)?	1.0					
4. Open water < 6.6ft deep?	10.0	> 3 acres	0.5 - 3 acres	< 0.5 acre		
5. Deepwater Habitats?	1.0	stream $\geq$ 1 mile and/or lake/pond >10 acres	stream < 1 mile and/or lake/pond <10 acres	No deepwater		
6. Wetland vegetation class diversity?	10.0	3 or more classes	2 classes	1 class		
7. Proximity to other wetlands?	10.0	connected/unconnected within 0.25 mile	connected 0.5-1mi. or unconnected 0.25-0.5 mi.	Not connected within 1 mile or > 0.5 mi. from unconnected		
8. Wildlife travel corridors?	5.0	Free access	Access partially blocked	Access blocked		
9. % of wetland edge undisturbed?	10.0	>95%	75-95%	< 75%		
10. Invasive plants (Use F1, Q6 score)	1.0					
Average Score - Wildlife Habitat		5.9				

3. FISH & AQUATIC HABITAT	Score	10	5	1	0	Notes
1. Dominant land use in watershed?	1.0	Woodland, wetland, inactive farmland	Active farm/rural res	Heavily developed residential, commercial, industrial		



2. Water Quality? (use F1, Q1 score)	1.0					
3. Open water?(use F2, Q4 score)	10.0					
4. Deepwater habitats > 6.6 ft. deep?	0.0	> 100 acres	10-100 acres	< 10 acres	Not present	
5. Stream width in wetland?	1.0	> 50 ft.	25-50 ft.	< 25 ft.	Not present	
6. Alteration of stream channel?	10.0	Natural channel / low gradient or steep gradient w/ riffles	Recently modified or formerly channelized	Recently channelized or stream in non-vegetated chute/pipe	Not present	
7. Diversity of substrate types?	1.0	4 or more substrates	2-3 substrates	1 substrate		
8. Coarse woody material and large rocks?	5.0	> 10% of cover in water	< 10% of cover in water	No visible cover		
9. Floating & submerged vegetation?	1.0	> 70% cover in water	30-70% cover in water	< 30% cover		
10. Artificial Barriers to aquatic life?	10.0	No barriers	Artificial barrier with provision for passage	Barrier with no provision for passage	No stream	
11. Fish or aquatic life that is rare, threatened, endangered or species of conservation concern?	1.0	Documented occurrence in or near wetland	Documented occurrence within 1/2 mi. & suitable habitat	No documented occurrence in 1/2 mi. but suitable habitat	No occurrence & no suitable habitat	
Average Score - Fish & Aquatic Habitat 3.7						

4. SCENIC QUALITY	Score	10	5	1	0	Notes
1. Wetland vegetation classes visible?	5.0	≥ 3 classes	2 classes	1 class		
2. Public access?	1.0	Public access & trails/road	Public access; no trails	No public access		
3. Visible extent across wetland?	10.0	Large expanse	Somewhat restricted view	Forested; limited view		
4. Open water visible?	10.0	> 3 acres	1-3 acres	< 1 acre		
5. Visual contrast with landscape?	10.0	High level of contrast	Some visual contrast	Little contrast or developed		
6. General appearance of wetland?	5.0	Undisturbed & natural	Minor visual detractors	Severe visual detractors		
Average Score - Scenic Quality 6.8						

5. EDUCATIONAL POTENTIAL	Score	10	5	1	0	Notes
1. Ecological Integrity Score?	5.9					
2. Wildlife Habitat Score?	5.9					
3. Fish & Aquatic Habitat Score?	3.7					
4. Public access?	1.0	Public access & trails/road	Public access; no trails	No public access		
5. Adequate parking for 10-15 cars or bus?	1.0	< 5 mins from site	5-15 min walk from site or parking limited	> 15 mins walk / limited parking		
6. Wetland vegetation classes accessible?	5.0	≥ 3 classes	2 classes	1 class		
7. Access to perennial stream / pond?	5.0	Direct water access	Access 5 mins or less	Limited/no access	No open water	
8. Scenic Quality Score?	6.8					
9. Disabled access	0.0	Yes			No	
Average Score - Education 3.8						

6. WETLAND RECREATION	Score	10	5	1	0	Notes
-----------------------	-------	----	---	---	---	-------

1. Wildlife Habitat Score?	5.9					
2. Open water access (canoes & kayaks)?	0.0	Open water & easy access	open water; limited access	Open water but no access	No open water	
3. Trails-based recreation?	1.0	Maintained trails present	Trails but not maintained	No trails		
4. Off-trail recreation opportunities?	1.0	Open water > .5 acre, <b>and</b> undisturbed buffer ≥ 75% of edge	Open water > .5 acre, <b>or</b> undisturbed buffer ≥ 75% of edge	Neither open water > .5 acre, or undisturbed buffer	No trails	
5. Off-road parking for two or more cars?	0.0	< 5 mins walk from site	5-10 min walk from site	> 10 mins walk/no parking	No access to site	
6. Scenic Quality Score?	6.8					

**Average Score - Wetland Recreation** **2.5**

7. FLOOD WATER STORAGE	Score	10	5	1	0	Notes
Use separate Flood Storage Index worksheet Field work is not needed for this function						
<b>Average Score - Flood Storage</b>	<b>2.4</b>					

8. GROUNDWATER	Score	10	5	1	0	Notes
1. Stratified drift aquifer beneath wetland?	10.0	Wetland overlies aquifer	Aquifer within 1/4 mile	Aquifer > 1/4 mile of wetland		
2. Public water supply area?	5.0	Wetland in in Favorable Gravel Well area	Wetland within 1/4 mile of Favorable Gravel Well area	Wetland > 1/4 mile of Favorable Gravel Well area		
3. Public wellhead protection area (WHPA)?	1.0	>75% of WHPA includes wetland	25%-75% of WHPA includes wetland	<25% of WHPA includes wetland		
4. Percent cover of highly permeable soils within 100 ft.?	10.0	> 50% of Table 3 soils	25-50% of Table 3 soils	< 25% of Table 3 soils		
5. Percent cover of highly permeable soils WITHIN the wetland	1.0	> 50% of Table 4 soils	25-50% of Table 4 soils	< 25% of Table 4 soils		

**Average Score - Groundwater** **5.2**

9. SEDIMENT TRAPPING	Score	10	5	1	0	Notes
1. Flood Storage Score?	2.4					
2. Wetland outlet?	10.0	No outlet or outlet is constricted or outlet is ponded	Outlet not constricted but primary flow through wetland is sheet flow.	Primary flow through wetland is in the channel.		
3. Character of water flow through the wetland?	10.0	No stream channel OR inlet but no outlet OR outlet impounded OR inlet&outlet and sinuosity >1.5	Channel sinuosity is <1.5 and >1.0	Straight channel - sinuosity = 1.0 and no impoundments		
4. Wetland to watershed size ratio?	1.0	Wetland > 10% of watershed	Wetland 1-10% of watershed	Wetland <1% of watershed		
5. Gradient of wetland?	10.0	Gradient < 0.5% or no outlet	Gradient 0.5-3%	Gradient > 3%		



6. Areal extent (% coverage) of vegetation	10.0	Persistent emergent, forested scrub-shrub, bogs >90%	Persistent & nonpersistent emergents, trees, shrubs 50-90%	Persistent & nonpersistent emergents, trees, shrubs <50%		
7. Avg. water depth in growing season?	5.0	< 1 ft. deep or no open water	> 1 ft. deep and < 6.6 ft. deep	> 6.6 ft. deep		

**Average Score - Sediment Trapping** **6.9**

10. NUTRIENTS	Score	10	5	1	0	Notes
1. Flood Storage Score?	2.4					
2. Sediment Trapping Score?	6.9					
3. % vegetation cover (use F9, Q6)	10.0					
4. Hydroperiod?	10.0	Semipermanent or seasonal flooding or saturated	Seasonally or temporarily flooded	Permanent flooding or intermittently exposed		
5. Dominant soils in wetland?	5.0	Fine-textured soils (Table in Appendix D)	Organic and/or peat soils (Table in Appendix D)	Sands and gravels (Table in Appendix D)		

**Average Score - Nutrients** **6.9**

11. SHORELINE ANCHORING		10	5	1	0	Notes
1. Gradation of wetland vegetation?	5.0	≥ 3 vegetation classes	2 wetland classes	1 wetland class		
2. Vegetation density in wetland?	10.0	> 90% cover	70-90% cover	< 70% cover		
3. Width of wetland along water body?	10.0	> 20 ft.	10-20 ft.	< 10 ft.		
4. Substrate "roughness" of wetland?	5.0	Many boulders, stones, cobbles	Few stones, mostly sand & gravel	Smooth, mostly silts & fine sands or organic material		

**Average Score - Shoreline Anchoring** **7.5**

12. NOTEWORTHINESS		10			0	Notes
1. Wetland within 500ft of Highest Ranked Habitat (NH WAP)?	10.0	YES			NO	
2. Local significance, high scores, largest	10.0	YES			NO	
3. Local or regional or statewide significance?	0.0	YES			NO	
4. Known rare/unique biological or geological features	0.0	YES			NO	
5. Documented historic/archaeological site?	0.0	YES			NO	
6. Connected to designated river?	0.0	YES			NO	
7. Wetland in urban setting?	0.0	YES			NO	

**Average Score - Noteworthiness** **20.0**

Wetland name/code R1  
Wetland area (acres) 69.1  
Watershed area (acres) 13690

Date Evaluated: 8-9-2024  
Evaluated by: Larissa Robinov & Mark West

*Do not enter data into cells highlighted in blue. These cells contain formulas that automatically carry data over from function to function, or total and average functional scores.*

1. ECOLOGICAL INTEGRITY	Score	10	5	1	0	Notes
1. Land uses in watershed that degrade water quality?	1.0	<5% of watershed with such land uses	5-10% of watershed with such land uses	>10% of watershed with such land uses		
2. Fill in Wetland?	10.0	Less than 1%	1-3%	>3%		
3. Agriculture in wetland?	10.0	Less than 5%	5-25%	> 25%		
4. Logging activity in wetland?	10.0	Less than 1%	1-10%	> 10%		
5. Human activity in wetland?	5.0	Low	Moderate	High		
6. Invasive plants in wetland?	1.0	<1%	1-5%	> 5%		
7. Road/driveway/railroad crossings?	1.0	None	within 500ft of wetland	adjacent to or crossing wetland		
8. Human activity within 500 ft?	1.0	Little or None	evident in up to 25% of 500 ft zone	evident in more than 25% of 500 ft zone		
9. % impervious surface within 500 ft.?	1.0	< 3%	3-10%	>10%		
10. Structure regulating water flow?	10.0	None	Slight modification	Severe modification		
Average Score - Ecological Integrity		5.0				

2. WETLAND WILDLIFE HABITAT	Score	10	5	1	0	Notes
1. Wetland acres?	5.0	> 100 acres	20-100 acres	<20 acres		
2. Ecological Integrity Avg. score?	5.0					
3. Water quality (Use F1, Q1 score)?	1.0					
4. Open water < 6.6ft deep?	5.0	> 3 acres	0.5 - 3 acres	< 0.5 acre		
5. Deepwater Habitats?	5.0	stream $\geq$ 1 mile and/or lake/pond >10 acres	stream < 1 mile and/or lake/pond <10 acres	No deepwater		
6. Wetland vegetation class diversity?	10.0	3 or more classes	2 classes	1 class		
7. Proximity to other wetlands?	10.0	connected/unconnected within 0.25 mile	connected 0.5-1mi. or unconnected 0.25-0.5 mi.	Not connected within 1 mile or > 0.5 mi. from unconnected		
8. Wildlife travel corridors?	1.0	Free access	Access partially blocked	Access blocked		
9. % of wetland edge undisturbed?	1.0	>95%	75-95%	< 75%		
10. Invasive plants (Use F1, Q6 score)	1.0					
Average Score - Wildlife Habitat		4.4				

3. FISH & AQUATIC HABITAT	Score	10	5	1	0	Notes
1. Dominant land use in watershed?	1.0	Woodland, wetland, inactive farmland	Active farm/rural res	Heavily developed residential, commercial, industrial		



2. Water Quality? (use F1, Q1 score)	1.0					
3. Open water?(use F2, Q4 score)	5.0					
4. Deepwater habitats > 6.6 ft. deep?	0.0	> 100 acres	10-100 acres	< 10 acres	Not present	
5. Stream width in wetland?	5.0	> 50 ft.	25-50 ft.	< 25 ft.	Not present	
6. Alteration of stream channel?	10.0	Natural channel / low gradient or steep gradient w/ riffles	Recently modified or formerly channelized	Recently channelized or stream in non-vegetated chute/pipe	Not present	
7. Diversity of substrate types?	5.0	4 or more substrates	2-3 substrates	1 substrate		
8. Coarse woody material and large rocks?	10.0	> 10% of cover in water	< 10% of cover in water	No visible cover		
9. Floating & submerged vegetation?	1.0	> 70% cover in water	30-70% cover in water	< 30% cover		
10. Artificial Barriers to aquatic life?	10.0	No barriers	Artificial barrier with provision for passage	Barrier with no provision for passage	No stream	
11. Fish or aquatic life that is rare, threatened, endangered or species of conservation concern?	1.0	Documented occurrence in or near wetland	Documented occurrence within 1/2 mi. & suitable habitat	No documented occurrence in 1/2 mi. but suitable habitat	No occurrence & no suitable habitat	
<b>Average Score - Fish &amp; Aquatic Habitat</b>		<b>4.5</b>				

4. SCENIC QUALITY	Score	10	5	1	0	Notes
1. Wetland vegetation classes visible?	10.0	≥ 3 classes	2 classes	1 class		
2. Public access?	10.0	Public access & trails/road	Public access; no trails	No public access		
3. Visible extent across wetland?	10.0	Large expanse	Somewhat restricted view	Forested; limited view		
4. Open water visible?	1.0	> 3 acres	1-3 acres	< 1 acre		
5. Visual contrast with landscape?	10.0	High level of contrast	Some visual contrast	Little contrast or developed		
6. General appearance of wetland?	10.0	Undisturbed & natural	Minor visual detractors	Severe visual detractors		
<b>Average Score - Scenic Quality</b>		<b>8.5</b>				

5. EDUCATIONAL POTENTIAL	Score	10	5	1	0	Notes
1. Ecological Integrity Score?	5.0					
2. Wildlife Habitat Score?	4.4					
3. Fish & Aquatic Habitat Score?	4.5					
4. Public access?	10.0	Public access & trails/road	Public access; no trails	No public access		
5. Adequate parking for 10-15 cars or bus?	10.0	< 5 mins from site	5-15 min walk from site or parking limited	> 15 mins walk / limited parking		
6. Wetland vegetation classes accessible?	10.0	≥ 3 classes	2 classes	1 class		
7. Access to perennial stream / pond?	10.0	Direct water access	Access 5 mins or less	Limited/no access	No open water	
8. Scenic Quality Score?	8.5					
9. Disabled access	0.0	Yes			No	
<b>Average Score - Education</b>		<b>6.9</b>				

6. WETLAND RECREATION	Score	10	5	1	0	Notes
-----------------------	-------	----	---	---	---	-------

1. Wildlife Habitat Score?	4.4					
2. Open water access (canoes & kayaks)?	10.0	Open water & easy access	open water; limited access	Open water but no access	No open water	
3. Trails-based recreation?	10.0	Maintained trails present	Trails but not maintained	No trails		
4. Off-trail recreation opportunities?	5.0	Open water > .5 acre, <b>and</b> undisturbed buffer ≥ 75% of edge	Open water > .5 acre, <b>or</b> undisturbed buffer ≥ 75% of edge	Neither open water > .5 acre, or undisturbed buffer	No trails	
5. Off-road parking for two or more cars?	10.0	< 5 mins walk from site	5-10 min walk from site	> 10 mins walk/no parking	No access to site	
6. Scenic Quality Score?	8.5					

**Average Score - Wetland Recreation** **8.0**

7. FLOOD WATER STORAGE	Score	10	5	1	0	Notes
Use separate Flood Storage Index worksheet Field work is not needed for this function						
<b>Average Score - Flood Storage</b>	<b>3.9</b>					

8. GROUNDWATER	Score	10	5	1	0	Notes
1. Stratified drift aquifer beneath wetland?	10.0	Wetland overlies aquifer	Aquifer within 1/4 mile	Aquifer > 1/4 mile of wetland		
2. Public water supply area?	5.0	Wetland in in Favorable Gravel Well area	Wetland within 1/4 mile of Favorable Gravel Well area	Wetland > 1/4 mile of Favorable Gravel Well area		
3. Public wellhead protection area (WHPA)?	5.0	>75% of WHPA includes wetland	25%-75% of WHPA includes wetland	<25% of WHPA includes wetland		
4. Percent cover of highly permeable soils within 100 ft.?	5.0	> 50% of Table 3 soils	25-50% of Table 3 soils	< 25% of Table 3 soils		
5. Percent cover of highly permeable soils WITHIN the wetland	5.0	> 50% of Table 4 soils	25-50% of Table 4 soils	< 25% of Table 4 soils		

**Average Score - Groundwater** **5.0**

9. SEDIMENT TRAPPING	Score	10	5	1	0	Notes
1. Flood Storage Score?	3.9					
2. Wetland outlet?	1.0	No outlet or outlet is constricted or outlet is ponded	Outlet not constricted but primary flow through wetland is sheet flow.	Primary flow through wetland is in the channel.		
3. Character of water flow through the wetland?	5.0	No stream channel OR inlet but no outlet OR outlet impounded OR inlet&outlet and sinuosity >1.5	Channel sinuosity is <1.5 and >1.0	Straight channel - sinuosity = 1.0 and no impoundments		
4. Wetland to watershed size ratio?	1.0	Wetland > 10% of watershed	Wetland 1-10% of watershed	Wetland <1% of watershed		
5. Gradient of wetland?	10.0	Gradient < 0.5% or no outlet	Gradient 0.5-3%	Gradient > 3%		



6. Areal extent (% coverage) of vegetation	10.0	Persistent emergent, forested scrub-shrub, bogs >90%	Persistent & nonpersistent emergents, trees, shrubs 50-90%	Persistent & nonpersistent emergents, trees, shrubs <50%		
7. Avg. water depth in growing season?	5.0	< 1 ft. deep or no open water	> 1 ft. deep and < 6.6 ft. deep	> 6.6 ft. deep		

**Average Score - Sediment Trapping** **5.1**

10. NUTRIENTS	Score	10	5	1	0	Notes
1. Flood Storage Score?	3.9					
2. Sediment Trapping Score?	5.1					
3. % vegetation cover (use F9, Q6)	10.0					
4. Hydroperiod?	10.0	Semipermanent or seasonal flooding or saturated	Seasonally or temporarily flooded	Permanent flooding or intermittently exposed		
5. Dominant soils in wetland?	5.0	Fine-textured soils (Table in Appendix D)	Organic and/or peat soils (Table in Appendix D)	Sands and gravels (Table in Appendix D)		

**Average Score - Nutrients** **6.8**

11. SHORELINE ANCHORING		10	5	1	0	Notes
1. Gradation of wetland vegetation?	10.0	≥ 3 vegetation classes	2 wetland classes	1 wetland class		
2. Vegetation density in wetland?	10.0	> 90% cover	70-90% cover	< 70% cover		
3. Width of wetland along water body?	5.0	> 20 ft.	10-20 ft.	< 10 ft.		
4. Substrate "roughness" of wetland?	5.0	Many boulders, stones, cobbles	Few stones, mostly sand & gravel	Smooth, mostly silts & fine sands or organic material		

**Average Score - Shoreline Anchoring** **7.5**

12. NOTEWORTHINESS		10			0	Notes
1. Wetland within 500ft of Highest Ranked Habitat (NH WAP)?	10.0	YES			NO	
2. Local significance, high scores, largest	10.0	YES			NO	
3. Local or regional or statewide significance?	10.0	YES			NO	
4. Known rare/unique biological or geological features	0.0	YES			NO	
5. Documented historic/archaeological site?	0.0	YES			NO	
6. Connected to designated river?	0.0	YES			NO	
7. Wetland in urban setting?	0.0	YES			NO	

**Average Score - Noteworthiness** **30.0**

Wetland name/code R2  
Wetland area (acres) 22.2  
Watershed area (acres) 13690

Date Evaluated: 8-9-2024  
Evaluated by: Larissa Robinov & Mark West

*Do not enter data into cells highlighted in blue. These cells contain formulas that automatically carry data over from function to function, or total and average functional scores.*

1. ECOLOGICAL INTEGRITY	Score	10	5	1	0	Notes
1. Land uses in watershed that degrade water quality?	1.0	<5% of watershed with such land uses	5-10% of watershed with such land uses	>10% of watershed with such land uses		
2. Fill in Wetland?	10.0	Less than 1%	1-3%	>3%		
3. Agriculture in wetland?	10.0	Less than 5%	5-25%	> 25%		
4. Logging activity in wetland?	10.0	Less than 1%	1-10%	> 10%		
5. Human activity in wetland?	5.0	Low	Moderate	High		
6. Invasive plants in wetland?	1.0	<1%	1-5%	> 5%		
7. Road/driveway/railroad crossings?	1.0	None	within 500ft of wetland	adjacent to or crossing wetland		
8. Human activity within 500 ft?	1.0	Little or None	evident in up to 25% of 500 ft zone	evident in more than 25% of 500 ft zone		
9. % impervious surface within 500 ft.?	10.0	< 3%	3-10%	>10%		
10. Structure regulating water flow?	10.0	None	Slight modification	Severe modification		
Average Score - Ecological Integrity		5.9				

2. WETLAND WILDLIFE HABITAT	Score	10	5	1	0	Notes
1. Wetland acres?	5.0	> 100 acres	20-100 acres	<20 acres		
2. Ecological Integrity Avg. score?	5.9					
3. Water quality (Use F1, Q1 score)?	1.0					
4. Open water < 6.6ft deep?	1.0	> 3 acres	0.5 - 3 acres	< 0.5 acre		
5. Deepwater Habitats?	1.0	stream $\geq$ 1 mile and/or lake/pond >10 acres	stream < 1 mile and/or lake/pond <10 acres	No deepwater		
6. Wetland vegetation class diversity?	10.0	3 or more classes	2 classes	1 class		
7. Proximity to other wetlands?	10.0	connected/unconnected within 0.25 mile	connected 0.5-1mi. or unconnected 0.25-0.5 mi.	Not connected within 1 mile or > 0.5 mi. from unconnected		
8. Wildlife travel corridors?	5.0	Free access	Access partially blocked	Access blocked		
9. % of wetland edge undisturbed?	10.0	>95%	75-95%	< 75%		
10. Invasive plants (Use F1, Q6 score)	1.0					
Average Score - Wildlife Habitat		5.0				

3. FISH & AQUATIC HABITAT	Score	10	5	1	0	Notes
1. Dominant land use in watershed?	1.0	Woodland, wetland, inactive farmland	Active farm/rural res	Heavily developed residential, commercial, industrial		



2. Water Quality? (use F1, Q1 score)	1.0					
3. Open water?(use F2, Q4 score)	1.0					
4. Deepwater habitats > 6.6 ft. deep?	0.0	> 100 acres	10-100 acres	< 10 acres	Not present	
5. Stream width in wetland?	1.0	> 50 ft.	25-50 ft.	< 25 ft.	Not present	
6. Alteration of stream channel?	10.0	Natural channel / low gradient or steep gradient w/ riffles	Recently modified or formerly channelized	Recently channelized or stream in non-vegetated chute/pipe	Not present	
7. Diversity of substrate types?	5.0	4 or more substrates	2-3 substrates	1 substrate		
8. Coarse woody material and large rocks?	10.0	> 10% of cover in water	< 10% of cover in water	No visible cover		
9. Floating & submerged vegetation?	5.0	> 70% cover in water	30-70% cover in water	< 30% cover		
10. Artificial Barriers to aquatic life?	10.0	No barriers	Artificial barrier with provision for passage	Barrier with no provision for passage	No stream	
11. Fish or aquatic life that is rare, threatened, endangered or species of conservation concern?	1.0	Documented occurrence in or near wetland	Documented occurrence within 1/2 mi. & suitable habitat	No documented occurrence in 1/2 mi. but suitable habitat	No occurrence & no suitable habitat	
<b>Average Score - Fish &amp; Aquatic Habitat</b> <b>4.1</b>						

4. SCENIC QUALITY	Score	10	5	1	0	Notes
1. Wetland vegetation classes visible?	10.0	≥ 3 classes	2 classes	1 class		
2. Public access?	10.0	Public access & trails/road	Public access; no trails	No public access		
3. Visible extent across wetland?	10.0	Large expanse	Somewhat restricted view	Forested; limited view		
4. Open water visible?	1.0	> 3 acres	1-3 acres	< 1 acre		
5. Visual contrast with landscape?	10.0	High level of contrast	Some visual contrast	Little contrast or developed		
6. General appearance of wetland?	10.0	Undisturbed & natural	Minor visual detractors	Severe visual detractors		
<b>Average Score - Scenic Quality</b> <b>8.5</b>						

5. EDUCATIONAL POTENTIAL	Score	10	5	1	0	Notes
1. Ecological Integrity Score?	5.9					
2. Wildlife Habitat Score?	5.0					
3. Fish & Aquatic Habitat Score?	4.1					
4. Public access?	10.0	Public access & trails/road	Public access; no trails	No public access		
5. Adequate parking for 10-15 cars or bus?	10.0	< 5 mins from site	5-15 min walk from site or parking limited	> 15 mins walk / limited parking		
6. Wetland vegetation classes accessible?	10.0	≥ 3 classes	2 classes	1 class		
7. Access to perennial stream / pond?	5.0	Direct water access	Access 5 mins or less	Limited/no access	No open water	
8. Scenic Quality Score?	8.5					
9. Disabled access	0.0	Yes			No	
<b>Average Score - Education</b> <b>6.5</b>						

6. WETLAND RECREATION	Score	10	5	1	0	Notes
-----------------------	-------	----	---	---	---	-------

1. Wildlife Habitat Score?	5.0					
2. Open water access (canoes & kayaks)?	0.0	Open water & easy access	open water; limited access	Open water but no access	No open water	
3. Trails-based recreation?	10.0	Maintained trails present	Trails but not maintained	No trails		
4. Off-trail recreation opportunities?	5.0	Open water > .5 acre, <b>and</b> undisturbed buffer ≥ 75% of edge	Open water > .5 acre, <b>or</b> undisturbed buffer ≥ 75% of edge	Neither open water > .5 acre, or undisturbed buffer	No trails	
5. Off-road parking for two or more cars?	5.0	< 5 mins walk from site	5-10 min walk from site	> 10 mins walk/no parking	No access to site	
6. Scenic Quality Score?	8.5					

**Average Score - Wetland Recreation** **5.6**

7. FLOOD WATER STORAGE	Score	10	5	1	0	Notes
Use separate Flood Storage Index worksheet Field work is not needed for this function						
<b>Average Score - Flood Storage</b>	<b>3.4</b>					

8. GROUNDWATER	Score	10	5	1	0	Notes
1. Stratified drift aquifer beneath wetland?	10.0	Wetland overlies aquifer	Aquifer within 1/4 mile	Aquifer > 1/4 mile of wetland		
2. Public water supply area?	10.0	Wetland in in Favorable Gravel Well area	Wetland within 1/4 mile of Favorable Gravel Well area	Wetland > 1/4 mile of Favorable Gravel Well area		
3. Public wellhead protection area (WHPA)?	1.0	>75% of WHPA includes wetland	25%-75% of WHPA includes wetland	<25% of WHPA includes wetland		
4. Percent cover of highly permeable soils within 100 ft.?	10.0	> 50% of Table 3 soils	25-50% of Table 3 soils	< 25% of Table 3 soils		
5. Percent cover of highly permeable soils WITHIN the wetland	5.0	> 50% of Table 4 soils	25-50% of Table 4 soils	< 25% of Table 4 soils		

**Average Score - Groundwater** **6.2**

9. SEDIMENT TRAPPING	Score	10	5	1	0	Notes
1. Flood Storage Score?	3.4					
2. Wetland outlet?	10.0	No outlet or outlet is constricted or outlet is ponded	Outlet not constricted but primary flow through wetland is sheet flow.	Primary flow through wetland is in the channel.		
3. Character of water flow through the wetland?	5.0	No stream channel OR inlet but no outlet OR outlet impounded OR inlet&outlet and sinuosity >1.5	Channel sinuosity is <1.5 and >1.0	Straight channel - sinuosity = 1.0 and no impoundments		
4. Wetland to watershed size ratio?	1.0	Wetland > 10% of watershed	Wetland 1-10% of watershed	Wetland <1% of watershed		
5. Gradient of wetland?	10.0	Gradient < 0.5% or no outlet	Gradient 0.5-3%	Gradient > 3%		



6. Areal extent (% coverage) of vegetation	10.0	Persistent emergent, forested scrub-shrub, bogs >90%	Persistent & nonpersistent emergents, trees, shrubs 50-90%	Persistent & nonpersistent emergents, trees, shrubs <50%		
7. Avg. water depth in growing season?	5.0	< 1 ft. deep or no open water	> 1 ft. deep and < 6.6 ft. deep	> 6.6 ft. deep		

**Average Score - Sediment Trapping** **6.3**

10. NUTRIENTS	Score	10	5	1	0	Notes
1. Flood Storage Score?	3.4					
2. Sediment Trapping Score?	6.3					
3. % vegetation cover (use F9, Q6)	10.0					
4. Hydroperiod?	10.0	Semipermanent or seasonal flooding or saturated	Seasonally or temporarily flooded	Permanent flooding or intermittently exposed		
5. Dominant soils in wetland?	5.0	Fine-textured soils (Table in Appendix D)	Organic and/or peat soils (Table in Appendix D)	Sands and gravels (Table in Appendix D)		

**Average Score - Nutrients** **6.9**

11. SHORELINE ANCHORING		10	5	1	0	Notes
1. Gradation of wetland vegetation?	10.0	≥ 3 vegetation classes	2 wetland classes	1 wetland class		
2. Vegetation density in wetland?	10.0	> 90% cover	70-90% cover	< 70% cover		
3. Width of wetland along water body?	10.0	> 20 ft.	10-20 ft.	< 10 ft.		
4. Substrate "roughness" of wetland?	5.0	Many boulders, stones, cobbles	Few stones, mostly sand & gravel	Smooth, mostly silts & fine sands or organic material		

**Average Score - Shoreline Anchoring** **8.8**

12. NOTEWORTHINESS		10			0	Notes
1. Wetland within 500ft of Highest Ranked Habitat (NH WAP)?	10.0	YES			NO	
2. Local significance, high scores, largest	10.0	YES			NO	
3. Local or regional or statewide significance?	10.0	YES			NO	
4. Known rare/unique biological or geological features	0.0	YES			NO	
5. Documented historic/archaeological site?	0.0	YES			NO	
6. Connected to designated river?	0.0	YES			NO	
7. Wetland in urban setting?	0.0	YES			NO	

**Average Score - Noteworthiness** **30.0**

Wetland name/code V  
Wetland area (acres) 19.9  
Watershed area (acres) 13690

Date Evaluated: 8-29-2024  
Evaluated by: Larissa Robinov & Mark West

*Do not enter data into cells highlighted in blue. These cells contain formulas that automatically carry data over from function to function, or total and average functional scores.*

1. ECOLOGICAL INTEGRITY	Score	10	5	1	0	Notes
1. Land uses in watershed that degrade water quality?	1.0	<5% of watershed with such land uses	5-10% of watershed with such land uses	>10% of watershed with such land uses		
2. Fill in Wetland?	10.0	Less than 1%	1-3%	>3%		
3. Agriculture in wetland?	5.0	Less than 5%	5-25%	> 25%		
4. Logging activity in wetland?	10.0	Less than 1%	1-10%	> 10%		
5. Human activity in wetland?	10.0	Low	Moderate	High		
6. Invasive plants in wetland?	5.0	<1%	1-5%	> 5%		
7. Road/driveway/railroad crossings?	1.0	None	within 500ft of wetland	adjacent to or crossing wetland		
8. Human activity within 500 ft?	1.0	Little or None	evident in up to 25% of 500 ft zone	evident in more than 25% of 500 ft zone		
9. % impervious surface within 500 ft.?	1.0	< 3%	3-10%	>10%		
10. Structure regulating water flow?	10.0	None	Slight modification	Severe modification		
Average Score - Ecological Integrity		5.4				

2. WETLAND WILDLIFE HABITAT	Score	10	5	1	0	Notes
1. Wetland acres?	5.0	> 100 acres	20-100 acres	<20 acres		
2. Ecological Integrity Avg. score?	5.4					
3. Water quality (Use F1, Q1 score)?	1.0					
4. Open water < 6.6ft deep?	1.0	> 3 acres	0.5 - 3 acres	< 0.5 acre		
5. Deepwater Habitats?	1.0	stream $\geq$ 1 mile and/or lake/pond >10 acres	stream < 1 mile and/or lake/pond <10 acres	No deepwater		
6. Wetland vegetation class diversity?	10.0	3 or more classes	2 classes	1 class		
7. Proximity to other wetlands?	10.0	connected/unconnected within 0.25 mile	connected 0.5-1mi. or unconnected 0.25-0.5 mi.	Not connected within 1 mile or > 0.5 mi. from unconnected		
8. Wildlife travel corridors?	5.0	Free access	Access partially blocked	Access blocked		
9. % of wetland edge undisturbed?	1.0	>95%	75-95%	< 75%		
10. Invasive plants (Use F1, Q6 score)						
Average Score - Wildlife Habitat		3.9				

3. FISH & AQUATIC HABITAT	Score	10	5	1	0	Notes
1. Dominant land use in watershed?	5.0	Woodland, wetland, inactive farmland	Active farm/rural res	Heavily developed residential, commercial, industrial		



2. Water Quality? (use F1, Q1 score)	1.0					
3. Open water?(use F2, Q4 score)	1.0					
4. Deepwater habitats > 6.6 ft. deep?	0.0	> 100 acres	10-100 acres	< 10 acres	Not present	
5. Stream width in wetland?	0.0	> 50 ft.	25-50 ft.	< 25 ft.	Not present	
6. Alteration of stream channel?	0.0	Natural channel / low gradient or steep gradient w/ riffles	Recently modified or formerly channelized	Recently channelized or stream in non-vegetated chute/pipe	Not present	
7. Diversity of substrate types?	5.0	4 or more substrates	2-3 substrates	1 substrate		
8. Coarse woody material and large rocks?	5.0	> 10% of cover in water	< 10% of cover in water	No visible cover		
9. Floating & submerged vegetation?	5.0	> 70% cover in water	30-70% cover in water	< 30% cover		
10. Artificial Barriers to aquatic life?	10.0	No barriers	Artificial barrier with provision for passage	Barrier with no provision for passage	No stream	
11. Fish or aquatic life that is rare, threatened, endangered or species of conservation concern?	1.0	Documented occurrence in or near wetland	Documented occurrence within 1/2 mi. & suitable habitat	No documented occurrence in 1/2 mi. but suitable habitat	No occurrence & no suitable habitat	
<b>Average Score - Fish &amp; Aquatic Habitat</b>		<b>3.0</b>				

4. SCENIC QUALITY	Score	10	5	1	0	Notes
1. Wetland vegetation classes visible?	10.0	≥ 3 classes	2 classes	1 class		
2. Public access?	1.0	Public access & trails/road	Public access; no trails	No public access		
3. Visible extent across wetland?	1.0	Large expanse	Somewhat restricted view	Forested; limited view		
4. Open water visible?	1.0	> 3 acres	1-3 acres	< 1 acre		
5. Visual contrast with landscape?	5.0	High level of contrast	Some visual contrast	Little contrast or developed		
6. General appearance of wetland?	5.0	Undisturbed & natural	Minor visual detractors	Severe visual detractors		
<b>Average Score - Scenic Quality</b>		<b>3.8</b>				

5. EDUCATIONAL POTENTIAL	Score	10	5	1	0	Notes
1. Ecological Integrity Score?	5.4					
2. Wildlife Habitat Score?	3.9					
3. Fish & Aquatic Habitat Score?	3.0					
4. Public access?	1.0	Public access & trails/road	Public access; no trails	No public access		
5. Adequate parking for 10-15 cars or bus?	1.0	< 5 mins from site	5-15 min walk from site or parking limited	> 15 mins walk / limited parking		
6. Wetland vegetation classes accessible?	5.0	≥ 3 classes	2 classes	1 class		
7. Access to perennial stream / pond?	0.0	Direct water access	Access 5 mins or less	Limited/no access	No open water	
8. Scenic Quality Score?	3.8					
9. Disabled access	0.0	Yes			No	
<b>Average Score - Education</b>		<b>2.6</b>				

6. WETLAND RECREATION	Score	10	5	1	0	Notes
-----------------------	-------	----	---	---	---	-------

1. Wildlife Habitat Score?	3.9					
2. Open water access (canoes & kayaks)?	0.0	Open water & easy access	open water; limited access	Open water but no access	No open water	PFO wetlands
3. Trails-based recreation?	1.0	Maintained trails present	Trails but not maintained	No trails		
4. Off-trail recreation opportunities?	0.0	Open water > .5 acre, <b>and</b> undisturbed buffer ≥ 75% of edge	Open water > .5 acre, <b>or</b> undisturbed buffer ≥ 75% of edge	Neither open water > .5 acre, or undisturbed buffer	No trails	
5. Off-road parking for two or more cars?	0.0	< 5 mins walk from site	5-10 min walk from site	> 10 mins walk/no parking	No access to site	
6. Scenic Quality Score?	3.8					

**Average Score - Wetland Recreation** **1.5**

7. FLOOD WATER STORAGE	Score	10	5	1	0	Notes
Use separate Flood Storage Index worksheet Field work is not needed for this function						
<b>Average Score - Flood Storage</b>	<b>2.7</b>					

8. GROUNDWATER	Score	10	5	1	0	Notes
1. Stratified drift aquifer beneath wetland?	10.0	Wetland overlies aquifer	Aquifer within 1/4 mile	Aquifer > 1/4 mile of wetland		
2. Public water supply area?	5.0	Wetland in in Favorable Gravel Well area	Wetland within 1/4 mile of Favorable Gravel Well area	Wetland > 1/4 mile of Favorable Gravel Well area		
3. Public wellhead protection area (WHPA)?	1.0	>75% of WHPA includes wetland	25%-75% of WHPA includes wetland	<25% of WHPA includes wetland		
4. Percent cover of highly permeable soils within 100 ft.?	1.0	> 50% of Table 3 soils	25-50% of Table 3 soils	< 25% of Table 3 soils		
5. Percent cover of highly permeable soils WITHIN the wetland	1.0	> 50% of Table 4 soils	25-50% of Table 4 soils	< 25% of Table 4 soils		

**Average Score - Groundwater** **3.4**

9. SEDIMENT TRAPPING	Score	10	5	1	0	Notes
1. Flood Storage Score?	2.7					
2. Wetland outlet?	5.0	No outlet or outlet is constricted or outlet is ponded	Outlet not constricted but primary flow through wetland is sheet flow.	Primary flow through wetland is in the channel.		
3. Character of water flow through the wetland?	10.0	No stream channel OR inlet but no outlet OR outlet impounded OR inlet&outlet and sinuosity >1.5	Channel sinuosity is <1.5 and >1.0	Straight channel - sinuosity = 1.0 and no impoundments		
4. Wetland to watershed size ratio?	1.0	Wetland > 10% of watershed	Wetland 1-10% of watershed	Wetland <1% of watershed		
5. Gradient of wetland?	5.0	Gradient < 0.5% or no outlet	Gradient 0.5-3%	Gradient > 3%		



6. Areal extent (% coverage) of vegetation	10.0	Persistent emergent, forested scrub-shrub, bogs >90%	Persistent & nonpersistent emergents, trees, shrubs 50-90%	Persistent & nonpersistent emergents, trees, shrubs <50%		
7. Avg. water depth in growing season?	5.0	< 1 ft. deep or no open water	> 1 ft. deep and < 6.6 ft. deep	> 6.6 ft. deep		

**Average Score - Sediment Trapping** **5.5**

10. NUTRIENTS	Score	10	5	1	0	Notes
1. Flood Storage Score?	2.7					
2. Sediment Trapping Score?	5.5					
3. % vegetation cover (use F9, Q6)	10.0					
4. Hydroperiod?	5.0	Semipermanent or seasonal flooding or saturated	Seasonally or temporarily flooded	Permanent flooding or intermittently exposed		
5. Dominant soils in wetland?	5.0	Fine-textured soils (Table in Appendix D)	Organic and/or peat soils (Table in Appendix D)	Sands and gravels (Table in Appendix D)		

**Average Score - Nutrients** **5.6**

11. SHORELINE ANCHORING		10	5	1	0	Notes
1. Gradation of wetland vegetation?	1.0	≥ 3 vegetation classes	2 wetland classes	1 wetland class		
2. Vegetation density in wetland?	10.0	> 90% cover	70-90% cover	< 70% cover		
3. Width of wetland along water body?	5.0	> 20 ft.	10-20 ft.	< 10 ft.		
4. Substrate "roughness" of wetland?	10.0	Many boulders, stones, cobbles	Few stones, mostly sand & gravel	Smooth, mostly silts & fine sands or organic material		

**Average Score - Shoreline Anchoring** **6.5**

12. NOTEWORTHINESS		10			0	Notes
1. Wetland within 500ft of Highest Ranked Habitat (NH WAP)?	10.0	YES			NO	
2. Local significance, high scores, largest	0.0	YES			NO	
3. Local or regional or statewide significance?	0.0	YES			NO	
4. Known rare/unique biological or geological features	0.0	YES			NO	
5. Documented historic/archaeological site?	0.0	YES			NO	
6. Connected to designated river?	0.0	YES			NO	
7. Wetland in urban setting?	0.0	YES			NO	

**Average Score - Noteworthiness** **10.0**

## NH Method - Floodwater Storage Index Worksheet

Date: Fall 2024

$$WFV = (F \times A \times L) \times 10$$

where:

**Maximum Wetland Storage Volume = 200 acre-feet**

**Maximum Wetland Floodwater Storage Function Value = 10**

*Scroll down for Tables 1 and 2*

\* "red" headings indicate data input columns

Gray shading = automated calculations

Do not add data to these columns

Wetland I.D.	Wetland Acreage that floods (W)	Watershed Acreage (S)	Wetland Area as % of Watershed (P) from Table 2	Water Storage Depth (D) 1.0 = default	Wetland Storage Volume (V) (acre-feet)	Wetland Storage Volume Factor (F) from Table 1	Watershed Area Factor (A) from Table 2	Location in Watershed (L) (1.0/0.8/0.6)	Flood Index (=) F x A x L
SAMPLE	61	873	6.99	1.0	61	0.81	0.85	0.8	5.508
V	19.9	13690	0.15	1.0	19.9	0.67	0.50	0.8	2.680
	50	11978		1.0		0.8	0.50	0.6	
P	26.9	13690	0.20	1.0	26.9	0.68	0.50	0.8	2.720
Q	12.8	13690	0.09	1.0	12.8	0.6	0.50	0.8	2.400
	14	11978		1.0		0.61	0.50	0.8	
F	24.9	11978	0.21	1.0	24.9	0.68	0.50	0.8	2.720
H	23.6	11978	0.20	1.0	23.6	0.69	0.50	0.8	2.760
	6.5	11978		1.0		0.5	0.50	0.8	
N	6.3	36650	0.02	1.0	6.3	0.54	0.50	0.8	2.160
R1	69.1	13690	0.50	1.0	69.1	0.77	0.50	1.0	3.850
R2	22.2	13690	0.16	1.0	22.2	0.68	0.50	1.0	3.400