

Prime Wetlands of Pelham

- History
- Present
- Proposed
- Technical Review
- Questions



- 1965 and 1966 Warrant Articles

12. To see if the Town will vote to adopt Sections 1, 2, 3, 4, 5 and 6 of Chapter 36A Revised Statutes Annotated which pertains to the establishment of a Conservation Commission.

Article.12. It was moved that this article, to establish a Conservation Commission, be passed in the affirmative. Upon a vote, the article was passed in the affirmative.

Article 15. It was moved and seconded that this article be passed over. It was explained by the Chairman of the Budget Committee that this article was put in without their recommendations because of lack of information. Upon the question, the article was passed over.

Article 16. A motion made that all town-owned land be retained until such time as the Conservation Commission, Fire Station and/or Police Station Committee, have studied the possibilities of using any of this land. The motion was seconded and passed in the affirmative.

RSA 36- A Purpose

the proper utilization and protection of the natural
resources and the protection of watershed
resources

A city or town which accepts the provisions of this chapter may establish a conservation commission, hereinafter called the commission, for the proper utilization and protection of the natural resources and for the protection of watershed resources of said city or town. Such commission shall conduct researches into its local land and water areas and shall seek to coordinate the activities of unofficial bodies organized for similar purposes, and may advertise, prepare, print and distribute books, maps, charts, plans and pamphlets which in its judgment it deems necessary for its work. It shall keep an index of all open space and natural, aesthetic or ecological areas within the city or town, as the case may be, with the plan of obtaining information pertinent to proper utilization of such areas, including lands owned by the state or lands owned by a town or city. It shall keep an index of all marshlands, swamps and all other wet lands in a like manner, and may recommend to the city council or selectmen or to the department of natural and cultural resources a program for the protection, development or better utilization of all such areas. It shall keep accurate records of its meetings and actions and shall file an annual report which shall be printed in the annual town or municipal report. The commission may appoint such clerks and other employees or subcommittees as it may from time to time require.

shall conduct researches into its local land and water areas

shall seek to coordinate the activities of unofficial bodies organized for similar purposes

may advertise, prepare, print and distribute books, maps, charts, plans and pamphlets

shall keep an index of all open space and natural, aesthetic or ecological areas as the case may be, with the plan of obtaining information pertinent to proper utilization of such areas, including lands owned by the state or lands owned by a town

shall keep an index of all marshlands, swamps and all other wet lands in a like manner

may recommend to the city council or selectmen or to the department of natural and cultural resources a program for the protection, development or better utilization of all such areas

shall keep accurate records of its meetings and actions

shall file an annual report which shall be printed in the annual town or municipal report

may appoint such clerks and other employees or subcommittees as it may from time to time require



THE PELHAM PRIME WETLAND STUDY

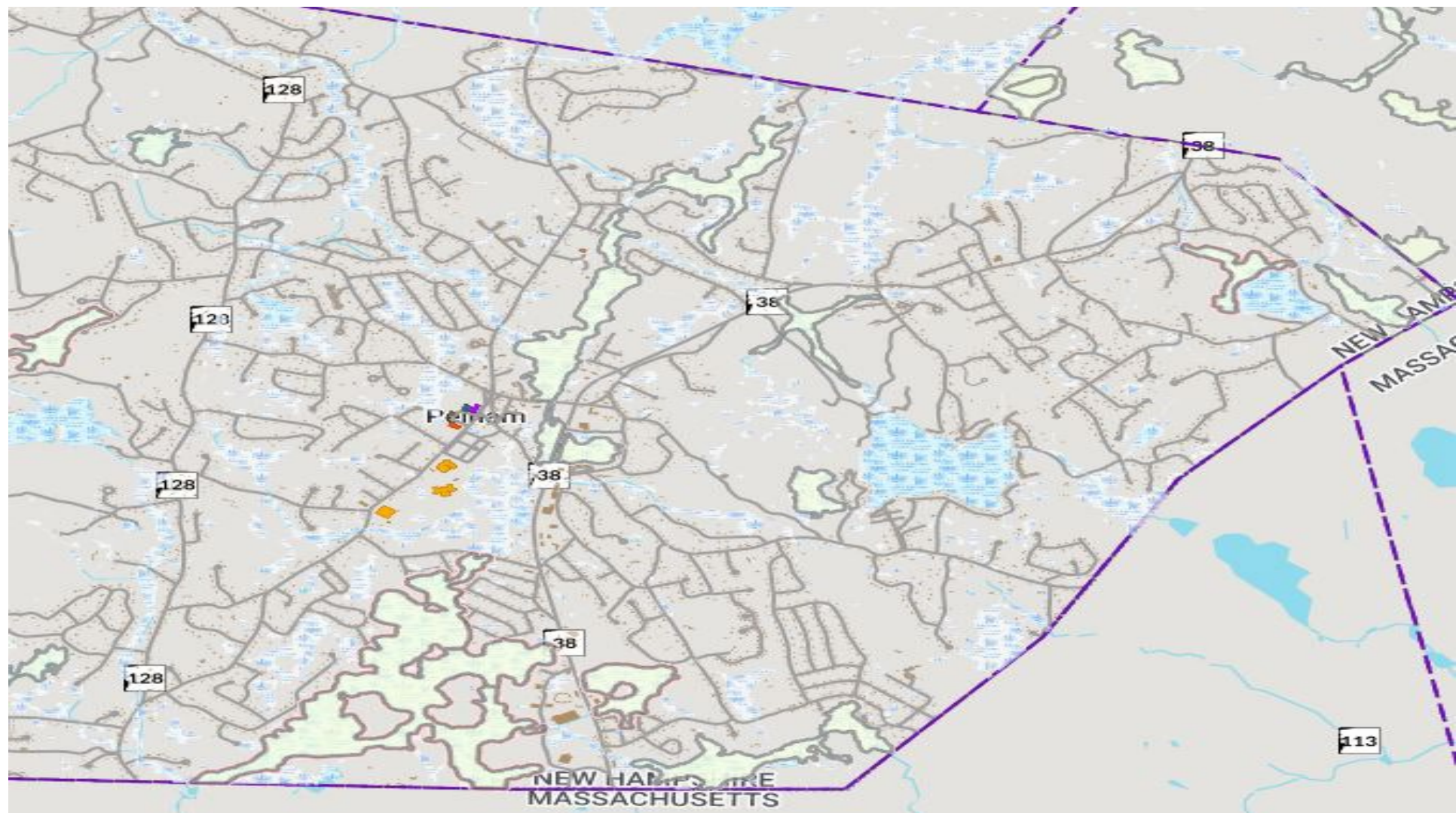
Prepared by: The Pelham Conservation Commission
Doug Hjorth, Chairman Gayle Plouffe
Paul Scott, Secretary Cathy Somma
Paul Dadak, Treasurer Paul McLaughlin

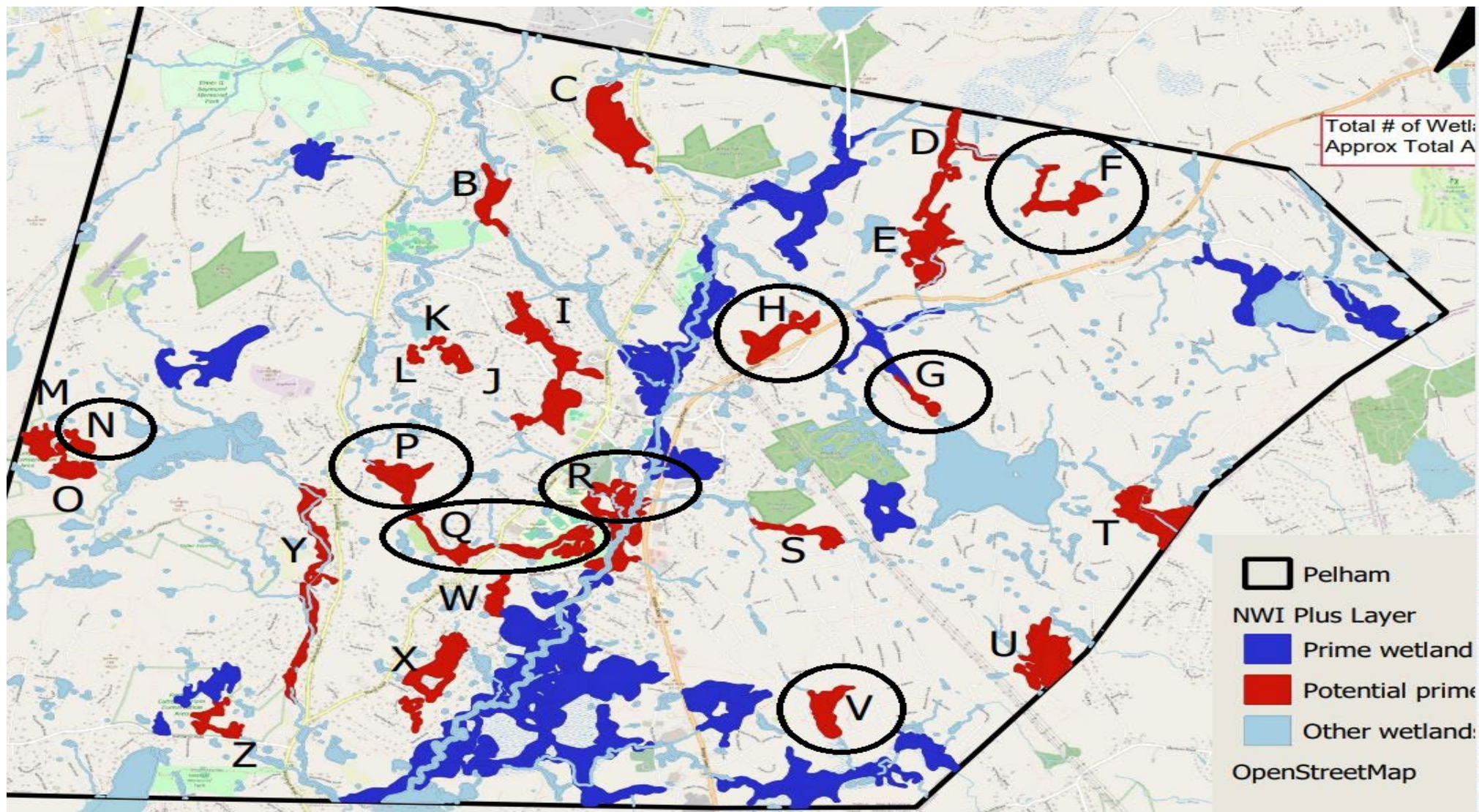
Prepared for: The Pelham Planning Board and
The Citizens of Pelham

FIGURE 1

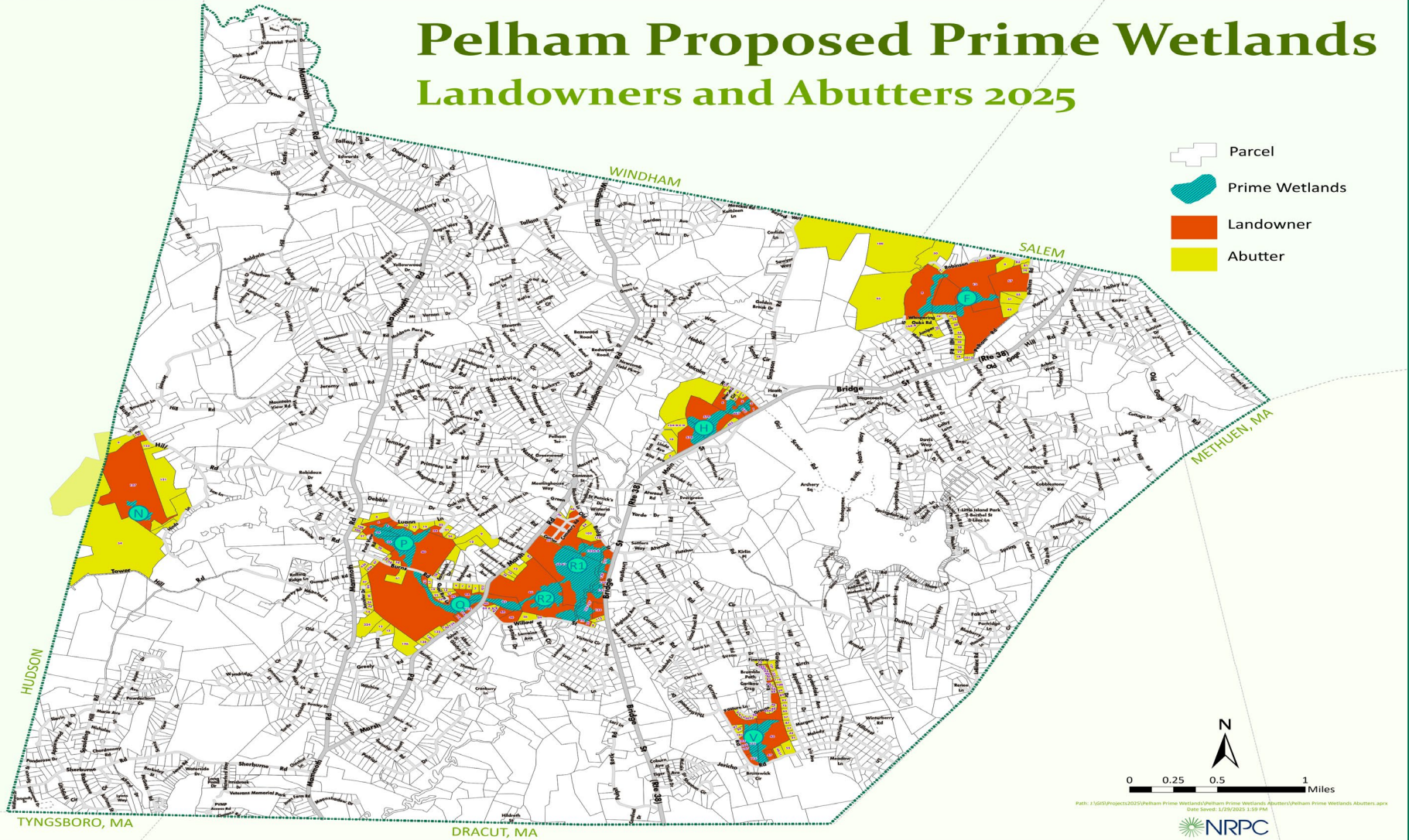
WETLANDS WITHIN PELHAM
THAT MEET THE MINIMUM
CRITERIA FOR PRIME WET-
LAND DESIGNATION.







Pelham Proposed Prime Wetlands Landowners and Abutters 2025



Wetland Conservation District

The Wetlands Conservation District is an overlay district which is hereby determined to be wetland areas of 2,000 square feet or more in size, or of any size if contiguous to surface waters such as lakes, ponds and streams, subjected to high water tables for extended periods of time, and all areas within fifty (50) feet of the edge of any wetlands, perennial stream or surface water body.

Where it is alleged that an area has been incorrectly delineated as a wetland, or that an area not so designated meets the criteria for wetlands designation, the soil scientist shall determine whether the area has been correctly delineated.

